



AVG PC TuneUp 2015

User Manual

Document revision 2015.07 (28.7.2015)

Copyright AVG Technologies CZ, s.r.o. All rights reserved.
All other trademarks are the property of their respective owners.



Contents

| | |
|--|-----------|
| 1. Welcome to AVG PC TuneUp! | 3 |
| 1.1 System Requirements | 3 |
| 1.2 Help and Support | 3 |
| 2. The Start Center | 4 |
| 3. PC Modes | 6 |
| 3.1 Economy Mode | 6 |
| 3.2 Standard Mode | 10 |
| 3.3 Turbo Mode | 10 |
| 4. Flight Mode | 15 |
| 5. Optimization Potential | 16 |
| 6. Menu Bar | 18 |
| 7. Dashboard | 19 |
| 7.1 Maintaining System | 20 |
| 7.2 Increasing Performance | 23 |
| 7.3 Fixing Problems | 25 |
| 7.4 System Protection | 25 |
| 8. Optimize | 28 |
| 8.1 Reducing System Load | 29 |
| 8.2 Optimizing registry and performance | 40 |
| 9. Clean Up | 52 |
| 9.1 Cleaning up Windows and programs | 53 |
| 9.2 Cleaning up browser | 55 |
| 9.3 Removing Broken Shortcuts | 57 |
| 9.4 Disabling Windows functions | 57 |
| 9.5 Finding and Removing Duplicate Files | 58 |
| 9.6 Finding and Deleting Large Amounts of Data | 60 |
| 9.7 Securely Deleting Data | 64 |
| 9.8 Cleaning Up iPhone, iPad or iPod touch | 67 |
| 10. Fix Problems | 71 |
| 10.1 Fixing Common Problems | 72 |
| 10.2 Checking the Hard Disk for Errors | 73 |
| 10.3 Restoring Deleted Files | 75 |
| 10.4 Managing Running Processes | 77 |
| 10.5 Showing System Information | 79 |



| | |
|---|------------|
| 11. Personalize | 81 |
| 11.1 Personalizing Options and Behaviors | 82 |
| 11.2 Personalizing the Appearance of Windows | 101 |
| 12. All Functions | 114 |
| 12.1 Editing the Registry | 119 |
| 12.2 Checking for Updates | 120 |
| 12.3 Displaying the AVG Optimization Report | 121 |
| 13. Rating Function for Programs | 122 |
| 14. The AVG PC TuneUp Gadget | 124 |
| 15. AVG PC TuneUp in Taskbar Notification Area | 126 |



1. Welcome to AVG PC TuneUp!

Congratulations on choosing **AVG PC TuneUp**! You have just acquired a comprehensive collection of over 30 different tools to optimize your PC. Use this software to revitalize PCs, notebooks or netbooks with a minimum effort.

With **AVG PC TuneUp**, you can restore the full performance capabilities of your operating system, games and programs. **AVG PC TuneUp** can also automatically run important maintenance tasks, such as cleaning up your hard disk and registry, or you can run them yourself manually. A slow and untidy computer is now a thing of the past for you. **AVG PC TuneUp** recognizes whether there are any problems on your system and offers simple solutions. You can also use **AVG PC TuneUp** to customize the appearance of your Windows system to your personal requirements.

We hope you enjoy using **AVG PC TuneUp** and your new, revitalized PC.

1.1. System Requirements

To be able to install and run **AVG PC TuneUp**, your computer must meet the following requirements:

- Windows XP (32-bit version only, Service Pack 3 or higher), Windows Vista, Windows 7, Windows 8 and 8.1, Windows 10 (all 32-bit or 64-bit versions)
- Min. 300 MHz processor
- 256 MB RAM
- Screen resolution at least 1024x768 pixels
- Online version: at least 150 MB of free disk space
- CD version: at least 400 MB of free disk space (plus CD-ROM or DVD drive)
- Internet Explorer 6 or higher

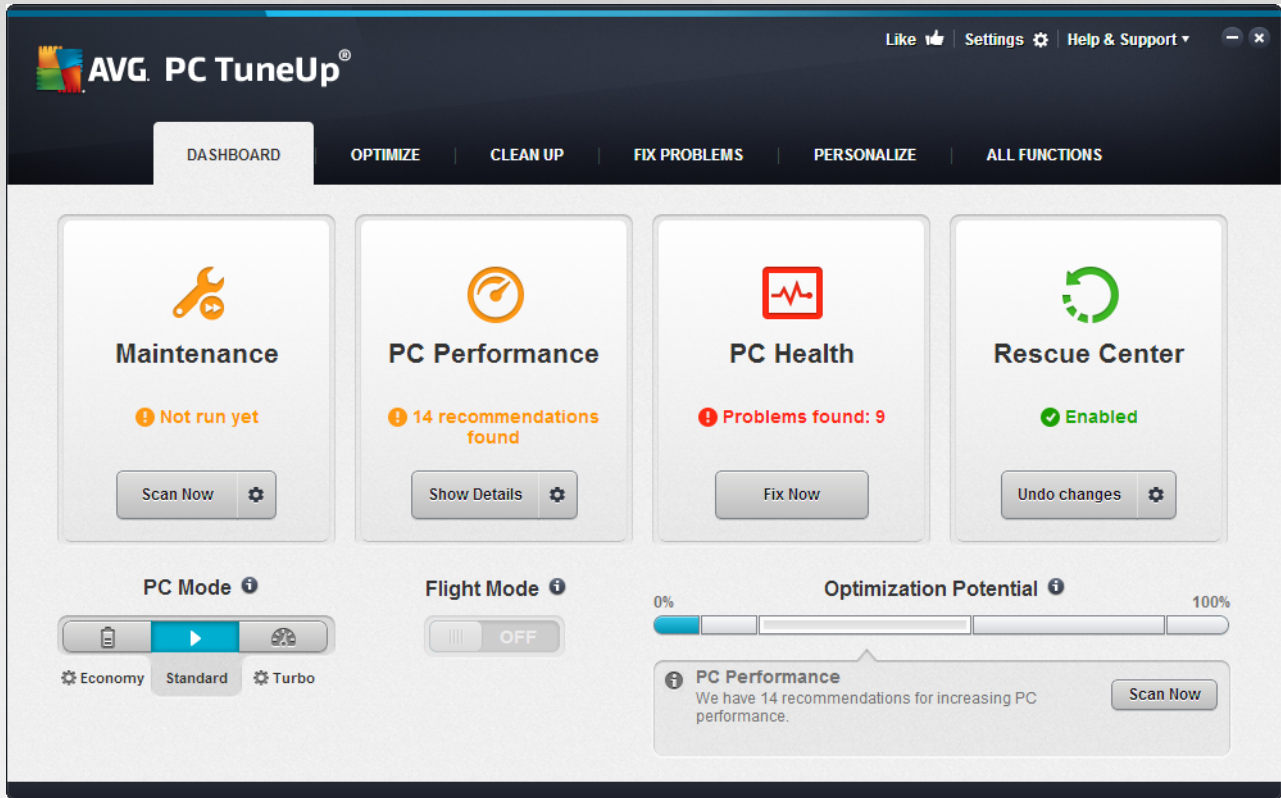
1.2. Help and Support

Help and support is available online at www.avg.com/customer-support. You will find more information about support options there.



2. The Start Center

The new **AVG PC TuneUp** Start Center is the central access point for all functions and optimization options.



The PC mode

In the **PC mode** area, you can decide which mode should be turned on for your Windows operating system.

For more information, see [PC Modes](#).

The Flight mode

This area is only active on laptops, otherwise it is grayed out. A simple switch allows to turn off all wireless network activity on your laptop.

For more information, see [Flight Mode](#).

The Optimization Potential

The **Optimization Potential** shows you how well you are already using the options provided to you by **AVG PC TuneUp**.

For more information, see [Optimization Potential](#).

The Menu Bar



In the menu bar, you have access to the central settings dialog of **AVG PC TuneUp** and to information about the program and individual modules.

For more information, see [Menu Bar](#).

The five categories

The main area in the **AVG PC TuneUp** Start Center comprises five categories, giving you fast access to the key features of **AVG PC TuneUp** sorted by topic.

The five categories in the Start Center represent the key task areas of **AVG PC TuneUp**. The first category shows the status of the four central optimization areas. You can see at a glance whether there is an urgent need for action or potential for optimization. The other four categories offer conveniently arranged links to the various modules of **AVG PC TuneUp**.

Dashboard

The Dashboard category shows you an overview of the current condition of your system and gives you recommendations on how you can improve the system's health. On the far right, you can see the status of your system protection.

For more information, see [Dashboard](#).

Optimize

Under Optimize, you can disable or uninstall unwanted programs and clean up your system and your data.

For more information, see [Optimize](#).

Clean Up

Under Clean up, you can delete unnecessary data systematically from your system.

For more information, see [Clean Up](#).

Fix Problems

Under Fix problems, you will find simple solutions for any problems that might occur.

For more information, see [Fix Problems](#).

Personalize

Under Personalize, you have many opportunities to customize your working environment to suit you.

For more information, see [Personalize](#).

All Functions

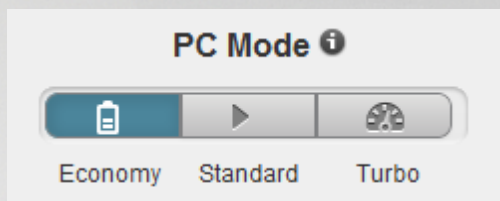
To the right of the categories, you will see the **All functions**. This lists all the functions that are available in **AVG PC TuneUp**, sorted by application area.

For more information, see [All Functions](#).



3. PC Modes

In the **PC mode** area, you can decide which mode should be turned on for your Windows operating system.



Economy Mode

Using AVG Economy Mode, you can reduce the energy consumption of your computer by turning off the screen, hardware components or unnecessary functions.

For more information, see [Economy Mode](#).

Standard Mode

Standard Mode represents the normal operating state of Windows.

For more information, see [Standard Mode](#).

Turbo Mode

You can use AVG Turbo Mode to give your system an additional performance boost at any time and adjust it to suit you.

For more information, see [Turbo Mode](#).

3.1. Economy Mode

In this chapter, you will learn **what exactly happens** when you switch to the **Economy Mode** and **when it can be useful to do so**. You will also receive instructions on **how to turn on and configure** the Economy Mode.

What is the Economy Mode?

The **Economy Mode** is an intelligent module of **AVG PC TuneUp** for saving energy. The **Economy Mode** provides immediate energy saving whenever you need it. When you switch your computer to **Economy Mode**, it reduces the energy used by hardware and the tasks, programs and features that are running in the background and not strictly necessary. They are turned off, which can reduce energy consumption (and electricity costs) considerably.

When Should I Switch to Economy Mode?

Using the Economy Mode, you can considerably reduce the energy consumption of your desktop PC or extend the battery life of your laptop, if there is no power socket available. Note however that when you switch to Economy Mode, some functionalities are switched off and will not be available again until you turn off



Economy Mode.

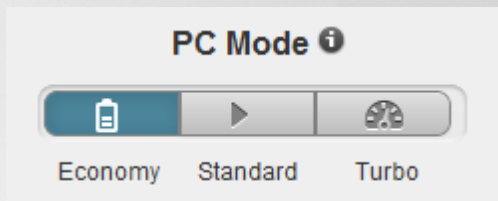
How Can I Tell How Much Energy Has Been Saved in Economy Mode?

The **Economy Mode Configuration Wizard** uses a traffic light system to show you how much energy you are actually saving with your settings. If the bar to the right of the total saving is green, your energy savings are high. A yellow bar represents moderate energy savings and a red bar represents low energy savings.

The actual level of energy savings in the **Services** area, for example, can be seen from the color of the bar that is shown to the right of the area in the navigation bar.

How to Switch the Computer to Economy Mode

At the bottom left of the **AVG PC TuneUp** Start Center, there are three switches. The left-hand switch is for Economy Mode. When you click this switch, the computer is switched to Economy Mode. The AVG icon then appears in the notification area of the taskbar, notifying you that Economy Mode is turned on.



Alternatively, you can access the switch for Economy Mode directly via the **AVG PC TuneUp** icon in the notification area of the taskbar. Left-click on the icon. A pop-up window opens, showing the Economy Mode switch on the bottom left.

How to Find Out if Economy Mode is On

If Economy Mode is on, a **AVG PC TuneUp** icon appears in the taskbar notification area (in the bottom right-hand corner beside the time), which tells you that Economy Mode is on. You can also recognize this from the switch in the Start Center.

How to Configure Your AVG Economy Mode

The first time you turn on Economy Mode, a window opens that allows you to make your own settings for Economy Mode. Decide here whether you want to use the default settings for Economy Mode or whether you want to configure them yourself for your own requirements.

For more information, see [Economy Mode Settings](#).

3.1.1. Economy Mode Settings

Start the wizard for configuring the **AVG Economy Mode** by clicking on **Settings** in the menu bar of the Start Center, selecting the **Economy Mode** area and clicking the **Open Configuration Wizard** button located there. Alternatively, open the window for configuring **AVG Economy Mode** by going to the AVG Start Center, selecting the **Optimize** category and clicking the **Configure Economy Mode** link (in the **Reduce system load** area).



Please note that if the Economy Mode is already switched on, you don't have to run the Wizard again. You can alter Economy Mode settings directly in central configuration dialog of your AVG (the Economy Mode item). Simply check (or uncheck) the appropriate boxes and click Apply.

Now prepare your own Economy Mode by selecting which hardware components, services and features may be temporarily turned off in order to save energy when Economy Mode is turned on. The more you authorize to be turned off, the more apparent the energy saving will be.

General Settings

Here you can specify whether configuration functions should also be offered that reduce the performance of the system and turn off visual effects. You can also decide whether Economy Mode should remain turned on when the computer is restarted.

Screen

Your computer's screen may use more energy even than hardware components such as the hard disk or the processor, for example. Reducing the screen brightness or turning off the screen after a short time if you are not using the computer will reduce energy consumption considerably.

Screen brightness (only for laptops)

General: This setting determines how much the general screen brightness should be reduced when Economy Mode is on.

When dimming: This setting determines how much the general screen brightness should be reduced when the screen is dimmed when Economy Mode is on.

Screen behavior

Turn off: This setting determines the period of time after which the screen should be switched off when Economy Mode is on.

Dimming (only for laptops): This setting determines the period of time after which the screen is dimmed when Economy Mode is on.

Hardware

If you turn off hardware components temporarily, the energy consumption of your computer will be reduced. What is more, every computer has many services running in the background that detect connected devices and provide you with the necessary functions to use these devices. You can restrict the amount of this support in order to reduce the energy consumption of your computer.

Hardware components

Hard disk standby: This setting determines the period of time after which the hard disk should go into standby mode when Economy Mode is on.

Processor energy-saving settings: This setting determines the extent of energy saving for the processor when Economy Mode is on.



Wireless adapter energy-saving settings (only in Windows Vista and 7): This option determines the extent of energy saving for the wireless adapter when the Economy Mode is on.

Connection to external devices

Synchronization with mobile devices: This setting will prevent synchronization of addresses, emails, music files, etc. with your cell phone or portable media player and the related program will not start automatically when the device is connected while Economy Mode is on.

Support for digital cameras and scanners: This setting means that you cannot import images from your digital camera or scan images when Economy Mode is on.

Services

The operating system performs many more tasks than most users are aware of. Many programs and services run permanently in the background, although they are not strictly necessary and use energy needlessly. If you never use some of these functions you can disable them and permanently reduce your computer's energy consumption.

Background functions

Network sharing of media library: This setting ensures that other network devices cannot access your images, videos or music in the media library when Economy Mode is on. However, Economy Mode does not affect the share of folders in the network.

Quick search using index creation: This setting ensures that Windows does not create an index of your files and emails when Economy Mode is on. Turning off this setting slows down any searches significantly.

Error Reporting: This setting ensures that no data will be gathered regarding errors and there will be no communication with Microsoft about crashed programs or other errors when Economy Mode is on.

Support for virtual machines: (This setting is only available if your computer has software for virtual machines installed on it.) This setting turns off background functions for the use of virtual machines when Economy Mode is on.

Various services

Rarely used services: This setting turns off services that are only needed in specific circumstances (e.g. company networks) or situations (e.g. installation of new programs) when Economy Mode is on.

Special encryption services: When Economy Mode is on, this setting turns off services for logging onto a domain.

Network communication services: When Economy Mode is on, this setting turns off network communication services that are rarely used, e.g. fax or peer-to-peer services.

Display

Visual effects provide a graphical display of Windows but take up valuable space in the memory. Particularly with a low performance graphics card you can increase the computer's performance by turning off visual effects.



Tip: This is a popular way of increasing the performance of netbooks on a sustained basis.

Visual effects

Visual special effects for windows: This setting turns off transparency effects and shadows of windows, the preview window in the taskbar and three-dimensional navigation between windows when Economy Mode is on.

Classic window style: This setting uses the classic Windows design for the appearance of windows, menus and buttons when Economy Mode is on. Also, in Windows XP, the colorful Windows interface is disabled, whereas in newer Windows transparency effects and thumbnails of windows in the taskbar are disabled.

Desktop background

Slideshow: This setting stops the slideshow for the desktop background when Economy Mode is on.

3.2. Standard Mode

The **Standard Mode** is turned on by default (if you have not switched to either the [Economy Mode](#) or the [Turbo Mode](#)).

In **Standard Mode** all functions of **AVG PC TuneUp** are available without restriction.

3.3. Turbo Mode

In this chapter, you will learn **what exactly happens** when you switch to the **Turbo Mode** and **when it can be useful to do so**. You will also receive instructions on **how to turn on and configure** the Turbo Mode.

What is the Turbo Mode?

The **Turbo Mode** provides an immediate performance boost whenever you need it. When you put your computer into **Turbo Mode**, an analysis is performed to see which of those programs and functions currently running in the background are not strictly necessary. These programs are stopped or slowed down, allowing the additional processing power gained to be used exclusively by the programs you are actually running.

How Does the Turbo Mode Work?

The following graphics illustrate the internal workings of your PC with the programs that you are currently using (green) and those running in the background (blue). Here you can see how your PC is assisted as soon as you enable Turbo Mode:



The green circles represent those programs that you wish to accelerate using the Turbo Mode. The blue diamonds are all the programs and functions that are not required at all when Turbo Mode is on. These are



therefore turned off so that all of the PC's processing power is available to the required programs.

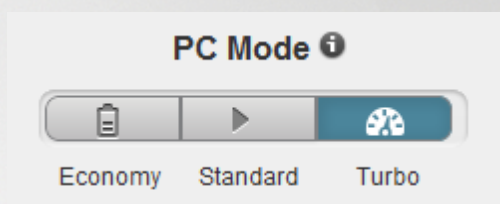
In addition to those programs that you are currently using (green), many others are also running in the background that are really not that important for your work (blue). If such background processes suddenly start to require a great deal of processing power, they are assigned a lower priority so that your other programs can continue to run smoothly.

When should I switch on Turbo Mode?

Using the Turbo Mode can, for example, speed up computer games, make it easier to work with performance-sapping programs or prevent videos from flickering or freezing when they are played. Note however that when you enable Turbo Mode, you also turn off some functionalities that will not be available again until you turn off Turbo Mode.

How to Switch the Computer to Turbo Mode

At the bottom left of the **AVG PC TuneUp** Start Center, there are three switches. The right-hand switch is for Turbo Mode. When you click this switch, the computer is switched to Turbo Mode. The AVG icon then appears in the notification area of the taskbar, notifying you that Turbo Mode is turned on.



Alternatively, you can access the switch for Turbo Mode directly via the **AVG PC TuneUp** icon in the notification area of the taskbar. Left-click on the icon. A pop-up window opens, showing the Turbo Mode switch on the bottom right.

How to Find Out if Turbo Mode is On

If Turbo Mode is on, a **AVG PC TuneUp** icon appears in the taskbar notification area (in the bottom right-hand corner beside the time), which tells you that Turbo Mode is on. You can also recognize this from the switch in the Start Center.

How to Configure Your AVG Turbo Mode

When you start Turbo Mode for the first time, the **Turbo Mode Configuration Wizard** will appear to help you create your own customized Turbo Mode. The wizard is integrated into the new central configuration dialog of **AVG PC TuneUp**.

For more information, see [Turbo Mode Settings](#).

3.3.1. Turbo Mode Settings

Start the wizard for configuring the **AVG Turbo Mode** by clicking on **Settings** in the menu bar of the Start Center, selecting the **Turbo Mode** area and clicking the **Open Configuration Wizard** button located there. Alternatively, open the window for configuring **AVG Turbo Mode** by going to the AVG Start Center, selecting



the **Optimize** category and clicking the **Configure Turbo Mode** link (in the **Reduce system load** area).

Please note that if the Turbo Mode is already switched on, you don't have to run the Wizard again. You can alter Turbo Mode settings directly in central configuration dialog of your AVG (the Turbo Mode item). Simply check (or uncheck) the appropriate boxes and click Apply.

In the **Turbo Mode Configuration Wizard**, set up your own Turbo Mode in six easy steps – simply select which tasks, programs and functions can be disabled temporarily to give a performance boost while Turbo Mode is enabled. The more you allow to be switched off, the better the gain in performance will be. You can always temporarily turn off all functions and tasks suggested here. None of your software features for Internet security or virus protection will be turned off.

Step 1: Postpone automatic maintenance tasks until later

Maintenance measures that start automatically in the background are important for the maintenance of your computer, but are not usually urgent. They can be carried out at a later date to free up the resources needed for your programs.

Postpone scheduled defragmentation: This will prevent the scheduled hard disk defragmentation by Microsoft or other well-known manufacturers from starting when Turbo Mode is on.

Postpone scheduled maintenance tasks: This will prevent automatic maintenance tasks and scheduled tasks for Microsoft and other manufacturers from being carried out when Turbo Mode is on. This includes **AVG Automatic Maintenance** and the automatic creation of backups.

Postpone automatic updates: If you select this option, you will be notified that program updates are available but these will not be automatically downloaded or installed while Turbo Mode is on.

Step 2: Limit connection with external devices.

Every computer has many services running in the background that detect connected devices and provide you with the necessary functions to use these devices. You can limit this support and have more resources available for your programs.

Turn off synchronization with mobile devices: This setting will prevent synchronization of addresses, emails, music files, etc. with your cell phone or portable media player and the related program will not start automatically when the device is connected while Turbo Mode is on.

Limit support for digital cameras and scanners: When Turbo Mode is on, you cannot import images from your digital camera or scan images.

Step 3: Reduce visual effects

Visual effects provide a graphical display of Windows but take up valuable space in the memory. Particularly with a low performance graphics card you can increase the computer's performance by turning off visual effects.

Tip: This is a popular way of increasing the performance of netbooks on a sustained basis.

Turn off visual special effects: This setting turns off transparency effects and shadows of windows, the preview window in the taskbar and three-dimensional navigation between windows when Turbo Mode is on.



Switch to classic window design: This setting uses the classic Windows design for the appearance of windows, menus and buttons when Turbo Mode is on. Also, in Windows XP the colorful Windows interface is disabled, whereas in newer Windows transparency effects and thumbnails of windows in the taskbar are disabled.

Step 4: Configure computer resources for optimum performance

Your computer's resources are in demand. A clever sharing solution for the resources will help increase your computer's performance enormously.

Tip: Since this does not limit any functions, this setting is also highly recommended for the long term.

Ensure optimum performance regardless of energy use: This setting uses the "high performance" Windows energy-saving plan when Turbo Mode is on. This ensures maximum performance regardless of the amount of energy used.

Step 5: Disable background functions

The operating system performs many more tasks than most users are aware of. Many programs and services run permanently in the background, although they are not strictly necessary and use valuable resources. If you never use some of these functions you can disable them and permanently increase your computer's performance.

Disable media library share in local network: This setting ensures that other network devices cannot access your images, videos or music in the media library when Turbo Mode is on. However, Turbo Mode does not affect the share of folders in the network.

Turn off quick search using index creation: This setting ensures that Windows does not create an index of your files and emails when Turbo Mode is on. Please note that turning off this function significantly slows down the search.

Turn off error reporting: This setting ensures that no data will be gathered regarding errors and there will be no communication with Microsoft about crashed programs or other errors when Turbo Mode is on.

Turn off support for virtual machines: (This option is only available if your computer has software for virtual machines installed on it.) This setting turns off background functions for the use of virtual machines when Turbo Mode is on.

Step 6: Additional performance boost

Every time Windows starts up, it starts up services that are used rarely or never. These services can occupy a large amount of the system's resources and slow down your PC. To prevent these services from not working when you need them, you should only turn them off temporarily for an added performance boost.

Turn off rarely used services: This setting turns off services that are only needed in specific circumstances (e.g. company networks) or situations (e.g. installation of new programs) when Turbo Mode is on.

Turn off special encryption services: When Turbo Mode is on, this setting turns off services for logging onto a domain.



Turn off network communication services: When Turbo Mode is on, this setting turns off network communication services that are rarely used, e.g. fax or peer-to-peer services.

Step 7: How long should Turbo Mode stay switched on?

The Turbo Mode can either be switched off automatically when the computer is shut down, or stay on until you switch it off manually. If you leave Turbo Mode on constantly, this can also speed up the startup process.

However, please note that for the system performance increase, the features that you selected in the configuration wizard must be switched off. If, when Turbo Mode is on, you are missing a required feature, turn Turbo Mode off and modify your settings so that when you restart Turbo Mode, this feature is available again.

Click **Finish** to close the wizard.



4. Flight Mode

This feature is only active on laptops, otherwise the whole section is grayed out.

The **Flight Mode** switch allows you to partly turn off wireless network activity on your laptop. This includes:

- *Wifi* – technology that allows an electronic device to exchange data or connect to the internet wirelessly using radio waves.
- *Bluetooth* – wireless technology standard for exchanging data over short distances using short-wavelength radio transmissions.

Please note that when you access this feature for the first time, an information dialog appears asking you whether you really want to activate **Flight Mode**. However, you can simply choose not to display this message ever again (by checking the appropriate checkbox).



5. Optimization Potential

The **Optimization Potential** is your personal indicator of optimization progress. You can find it on the **AVG PC TuneUp Start Center** next to the **PC mode area**.

What is the Optimization Potential?

The **Optimization Potential** uses a graph and associated notifications to show you how extensively you are already using the options of **AVG PC TuneUp** to increase performance and maintain the system and where there is still potential to optimize your system further.

The Optimization Potential shows you details of already the completed optimizations and the potential you have exploited; moreover, it also helps you to recognize the remaining unused potential and make use of it.

The Graph

In the graph, the blue sections on the left represent the modules you have used to make your optimization progress so far, while the light gray sections on the right represent open optimization options. A message is assigned to every section of the graph: the messages under blue sections are purely informative, notifying you about already completed optimizations. The messages under gray sections, representing the optimization potential that can still be exploited, are more interactive, allowing you to directly access problems and deal with them right away.

Messages

Below the graph, you can see the current messages about optimizations already completed and about untapped potential. If you point your mouse cursor at any of the sections, an appropriate message will be displayed. In case of sections containing some unused potential, some button (like **Scan Now**, **Fix Now** or **Show Details**) will be available; clicking it opens the precise **AVG PC TuneUp** module that you can use to achieve the unused potential.

Even if your system is perfectly optimized today, anything could change tomorrow that could present areas for optimization, e.g. the installation of new programs or a change to system settings. Pay attention to the messages on unused potential in order to keep your system optimized for the long term and therefore maintain a good Optimization Potential.

What is Used to Calculate the Optimization Potential?

AVG PC TuneUp performs an analysis to see which optimizations it can perform on your system. This potential is displayed in a graph showing you how close your system is to having 100% optimization. You will achieve 100% – the perfect Optimization Potential and therefore a fully filled out graph – when you implement the recommended optimization potential for your system as much as possible.

The graph is made of different sections. The sections on the left-hand side (displayed in blue) represent optimizations completed and the sections on the right-hand side (displayed in gray) show optimization potential still remaining. The Optimization Potential is calculated based on the analysis results of the following sections:

Maintenance

For this section to be considered as optimized, one of the following conditions must be fulfilled:



- Automatic Maintenance must be activated with all the necessary maintenance tasks enabled, or
- AVG 1-Click Maintenance is carried out within 14 days of use with all the necessary maintenance tasks, or
- AVG Registry Cleaner and AVG Shortcut Cleaner are run within 14 days and Temporary files are deleted within 14 days of use.

To delete **Temporary files**, open the **Clean Up** category in the Start Center. Here, open the **Clean Up Windows and Programs** dialog (in the **Gain disk space and delete usage data** area). Then check all boxes in the **Temporary Windows files** section and click the **Clean Up** button.

Live Optimization

For this section to be considered as optimized, the two **Live Optimization** options should be enabled. These two options have the same weighting.

PC Performance

Please note that you must answer the questions on your profile in order to receive appropriate recommendations for your system.

For this section to be considered as optimized, the following condition must be fulfilled:

- You have either accepted or hidden all recommendations.

Recommendations that you have hidden for 30 days will cause the status to be reclassified when this period expires and the recommendation will be displayed again.

PC Health

For this section to be considered as optimized, the following condition must be fulfilled:

- You have either fixed or hidden all problems.

Problems that you have hidden for 30 days will cause the status to be reclassified when this period expires and the problem will be displayed again.

Disable programs

The Optimization Potential analyzes how many of your existing programs are using up your system's resources and recommends that you optimize these through **AVG Program Deactivator** or **AVG StartUp Manager**. In doing so, the Optimization Potential takes into account the fact that you have classified some of your programs as important despite their system load and that they should remain active. Therefore this section of the graph is considered as optimized after a certain number of programs have been disabled.



6. Menu Bar

In the menu bar, you have access to the central settings dialog of **AVG PC TuneUp** and to information about the program and individual modules.

The "Settings" Menu

Clicking on **Settings** takes you to the central configuration dialog of **AVG PC TuneUp**. Here you can adapt the program to your requirements, apply maintenance settings and configure **AVG Live Optimization**, **AVG Turbo Mode**, the update check and many other modules of **AVG PC TuneUp**.

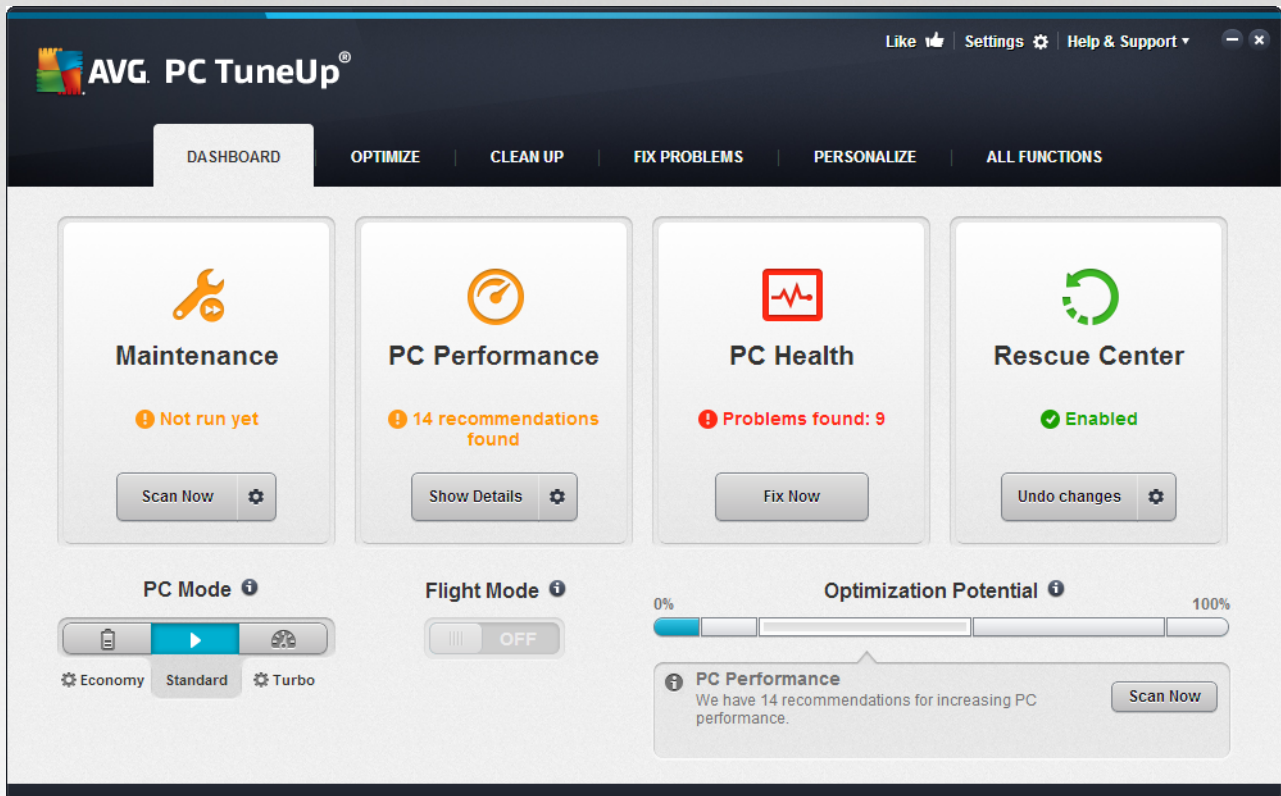
The "Help & Support" Menu

The **Help & Support** menu provides you with access to this program help. You can also click the link there and go to the AVG website directly. The **Info** entry opens a window with detailed information on your version of **AVG PC TuneUp**. This information can be useful if you need to contact technical support. Clicking on **Check for updates** starts the **AVG Update Wizard** module, which checks whether there are any new updates for your **AVG PC TuneUp**.



7. Dashboard

The **Dashboard** category displays the current status for the three most important function areas provided to you by **AVG PC TuneUp**. In the event of warnings or recommendations, you can use the appropriate button to immediately address the problem behind the warning or view the recommendations. In the fourth area, you can see whether the **AVG Rescue Center** protection is enabled, so that you can undo any changes at any time.



Maintenance

The status in the **Maintenance** area shows how often your computer is maintained. This takes into account whether **Automatic Maintenance** is carried out regularly with the most important maintenance tasks or whether you have manually run **1-Click Maintenance** recently.

Under the status indicator is the **Scan Now** button. If you click it, **1-Click Maintenance** will be carried out with the default **AVG PC TuneUp** settings or the changes to the maintenance settings made by you.

When you click on the **gear wheel** button next to the **Scan Now** button, the central configuration dialog opens, where you can specify the maintenance tasks that should be carried out by **Automatic Maintenance** and **1-Click Maintenance**. You can also specify when **Automatic Maintenance** should be carried out.

For more information, see [Maintaining system](#).

PC Performance

The status field in the **PC performance** area shows whether **AVG PC TuneUp** has detected options for increasing the performance of your computer. For example, you may receive recommendations for increasing



the speed of your Internet, uninstalling programs that haven't been used for a while or upgrading your hardware.

However, in order to get the most out of performance recommendations that are personalized to your requirements, you must first answer some questions regarding your usage profile. To do trigger this dialog, click the **Scan Now** button (or, if you're not running the PC performance test for the first time, use the **gear wheel** button next to the **Scan Now** button).

If there are recommendations, you can view these by clicking **Show details** or the link to the recommendations. Each recommendation has a detailed description and you can apply most recommendations with just a click of the mouse. You can also hide individual recommendations. Once all recommendations have been applied or hidden, the status for this area reverts to green.

For more information, see [Increasing Performance](#).

PC Health

The status in the **PC Health** area shows whether everything is working fine on your computer or whether critical problems have been detected which may affect the system's health. For example, a check can be carried out to see if key Windows settings have been configured correctly, if there is enough free space on your system drive or whether important security programs have been installed.

If problems have been found, click **Fix problems**. For each problem, you will receive a description and can choose if you want to solve it now or hide it until later. Once all problems have been solved or hidden, the status of this area reverts to green.

For more information, see [Fixing Problems](#).

Rescue Center

On the far right under **Rescue Center**, you can see the current status of **AVG Rescue Center**. By simply clicking on **Undo changes** you can undo any changes made in **AVG PC TuneUp** at any time.

The **AVG Rescue Center** module monitors the changes you make to your system using **AVG PC TuneUp** and allows you to undo these at a later stage. You can also use **AVG Rescue Center** to manage restore points and thereby undo system changes that you did not make using **AVG PC TuneUp**.

When you click on the **gear wheel** button next to the **Undo changes** button, the central configuration dialog opens, allowing you to specify the modules protected by the **AVG Rescue Center**, as well as the number of stored backups and frequency of their deletion.

For more information, see [Undoing changes](#).

7.1. Maintaining System

In this chapter, you will find out how **1-Click Maintenance** or **Automatic Maintenance** can help you to maintain an **optimized system performance** and a **clean computer**, so that the system runs quickly and reliably.



7.1.1. 1-Click Maintenance

1-Click Maintenance is particularly suited to those users who would rather set the time for maintenance themselves and wish to monitor its progress. The link for starting 1-Click Maintenance can be found in the status field of the **Maintenance** category in the Start Center. After maintenance has been performed by **1-Click Maintenance**, further details on any problems found are also displayed.

By default, **1-Click Maintenance** performs the following tasks for you:

- Cleans your registry

Over time, the central Windows registry becomes filled with hundreds of superfluous entries. These include references to non-existent files, backlogs of programs deleted long ago and faulty entries. Your registry is cleaned, making your Windows system fast and problem-free.

- Defragments your registry

Even after the registry has been cleaned as described above, it is not automatically smaller because the disk space that is freed up is not released. This feature compresses the registry by deleting these gaps.

- Removes broken shortcuts

1-Click Maintenance checks whether there are any broken shortcuts on your desktop or in the Start menu or Quick Launch taskbar and then automatically deletes them. At the same time, a search is also made for faulty entries in the history lists of various programs such as Windows Media Player or Microsoft Office.

- Frees up disk space by deleting unnecessary files

So-called "temporary" files are something of a nuisance. Windows and programs create temporary files on the hard disk, in order to temporarily store certain settings or data. If the program in question is closed, these files should really be deleted from the program. However, the program in question often "forgets" to clean up after itself so that over time your hard disk can be filled with a lot of unnecessary data. **1-Click Maintenance** reliably deletes all temporary files and folders from your hard disk.

- Cleans up your browser

As you surf the Internet, your browser saves various kinds of data on your computer. 1-Click Maintenance cleans up the cache and download history of your browser.

- Optimizes system startup and shutdown

Some programs that are run each time you start your system slow down the startup process to an unnecessary extent. Such known programs that are definitely not required are turned off here.

- Defragments your hard disk

In the background, **AVG PC TuneUp** changes the arrangement of files and folders so that they can be read more quickly. Regular defragmentation is paramount - especially if the data structure of your hard disk changes frequently, for example because you move or delete files or install new programs. Defragmentation is, however, only carried out when necessary. And you can even



choose whether - if it was determined that defragmentation was necessary - a thorough or a quick defragmentation should take place, or whether this should depend on the result of the analysis.

Solid-state drives (SSD) are detected by **AVG PC TuneUp**. They are not analyzed or defragmented, as it is not possible to optimize solid-state drives through defragmentation and they could be damaged by defragmentation.

7.1.2. Automatic Maintenance

The **Automatic Maintenance** is particularly useful for all users who do not want to worry about the maintenance of their computer. As its name suggests, **Automatic Maintenance** regularly and automatically performs the most important maintenance work on your system to ensure that Windows remains fast and stable.

The **Automatic Maintenance** function is also configured so that it performs all maintenance tasks. However, it is run in the background and only the notifications tell you when it was carried out.

Performing Maintenance

You can specify whether and when **Automatic Maintenance** should run automatically in the background. You can even have automatic maintenance run only in idle mode, i.e. it only starts when you are not currently working on your computer and no programs are required in the background. This way **Automatic Maintenance** will never interrupt your work. If you select this option, following the number of days specified by you, maintenance will be attempted as soon as your computer is in idle mode. Three days is selected by default.

If, after a period of a week, it was not possible to perform full maintenance because your computer was not in idle mode for long enough then - if you enable this option - maintenance will be carried out anyway. This prevents your computer from not being maintained over a long period of time.

If you choose scheduled maintenance, the procedure is similar: If your computer is not switched on at the time of scheduled maintenance, **Automatic Maintenance** is performed 5 minutes after you next start your PC. This option can also be disabled.

If you work with a portable computer, you can also specify - in addition to the other options - that you don't want maintenance to be performed when the computer is running off the battery, so as not to reduce the battery life unnecessarily. This option is enabled by default.

7.1.3. Changing Maintenance Settings

In the Start Center, click on the gear wheel button in the **Maintenance** area of the **Dashboard** category. The central **AVG PC TuneUp** configuration dialog opens, with an area for **Automatic Maintenance** and one for **1-Click Maintenance**. Configure your settings here.

Alternatively, you can open the maintenance settings window by going to **All functions** in the Start Center and selecting the **Settings** entry under **AVG PC TuneUp**. Or click on **Settings** in the Start Center menu bar and select the **Automatic Maintenance** or **1-Click Maintenance** area.

Because **AVG PC TuneUp** preferably wants to provide comprehensive maintenance for your computer, all maintenance tasks are activated by default for both **Automatic Maintenance** and **1-Click Maintenance**. However, if you do not want certain maintenance tasks to be performed, you can exclude them from maintenance. For example, if you would rather defragment your hard disk manually, simply clear the **Defragment hard disks** checkbox.



7.2. Increasing Performance

In this chapter, you will find out **why it is important to do so** and **how** you can use **Increase performance** to increase the performance of your system, by turning off unnecessary tasks and services.

You can improve your **system performance** by turning off tasks and services that run in the background and that you rarely, if ever, need for your day-to-day work. For tablet PC compatibility (i.e. the option of operating the computer by moving a stylus across the screen) or network server technologies. You can also increase the performance of your computer by uninstalling programs. A search is therefore run for programs that have not been used for a long time - programs that you may not even remember you had and which slow down your system unnecessarily. **AVG PC TuneUp** also recognizes when your computer hardware is not powerful enough.

Your **Internet settings** can prevent Windows from using the bandwidth of your Internet connection optimally. Downloading two files at once or downloading data from websites can be slowed down by Windows default settings. You will also be shown the potential for optimization here too.

Should your computer be slowed down by superfluous **visual effects**, this will be identified.

AVG PC TuneUp checks your computer for such performance-sapping visual effects and provides recommendations for increasing performance.

To enable **AVG PC TuneUp** to provide you with comprehensive recommendations, you must complete the profile before running the software for the first time. The way is then clear to a rapid and simple performance boost.

In the Start Center under the **Dashboard** category, you can see whether you have any recommendations in the status field of the **PC performance** category. If you have hidden some recommendations, these do not impact the status any more. Open the details window by clicking on the **Show details** button.

When you open this window for the first time, you must answer the short questions from the profile wizard, so that the optimization can be precisely tailored to your situation and needs. If you wish to adjust or update your profile info, simply click the **gear wheel** button (just next to the **Scan Now/Show details** button). *For more information, see [Profile](#).*

Overview

The details window opens on the **Overview** tab, where you can find out whether there is any potential for increasing performance. In the areas **Internet settings** and **Visual effects**, you can perform all the optimization recommendations found by clicking **Optimize all**. This will not restrict any of your important functions.

The recommendations in the **Hardware and software** area on the other hand depend heavily on your usage behavior. This is why you can only apply them one at a time.

Switching Tabs

Click on a recommendation or on the **Details** button to move to the other tabs, where you can view the details of each recommendation. Alternatively, you can click on the name of the tab you want.

Applying Recommendations



In the **Internet settings** and **Visual effects** tabs you can perform all the optimization recommendations found by clicking **Optimize all**. Alternatively, you can click on a recommendation in the left column. In the right-hand area of the window, a detailed description will appear and you can apply the recommendation by clicking on the button on the bottom right.

In the **Hardware and software** tab you must answer a few simple questions on each recommendation in order to receive suitable options to continue. If you can't answer a question or want to postpone the decision, you can hide the recommendation by clicking on **Hide recommendation** on the bottom right.

Please note that you cannot of course simply accept the recommendations concerning your hardware, but can only hide them.

Hiding and Showing Recommendations

If you do not want to accept a recommendation, click **Hide recommendation**. Now you can select whether you want to hide it permanently or only for 30 days. The number of hidden recommendations is always displayed in the taskbar on the right. By clicking on the number displayed, you can easily **show** these recommendations again.

Changing a Profile

Selecting **Change profile** on the top right takes you to the profile, which shows the basis for your optimization recommendations.

7.2.1. Profile

The first time you use **AVG PC TuneUp**, you are prompted to complete a profile, so that it can provide you with tailored recommendations for increasing performance. This profile contains the following questions:

How is your Computer Usually Connected to the Internet?

Select the type of connection from the list so that your network, Internet and browser settings (for example packet sizes) can be adapted as best as possible to your Internet connection.

What Criteria Should be Used to Optimize Visual Effects?

If you select **Maximum performance** (irrespective of display quality), all effects and the colorful Luna theme (Windows XP), or the Aero glass theme (newer Windows) are turned off. This is highly recommended, especially for slower computers, because the display of these sophisticated interfaces really eats up resources.

If the interface on your computer flickers and it takes a while for windows to open, choose the option **A balance between performance and display quality**. The attractive interfaces are retained but the performance-sapping effects are switched off.

If you have a high-performance graphics card, your system performance will not be improved by turning off the Windows Vista Aero desktop experience.

How Many Days Should a Program Remain Unused Before We Recommend Removing it?



Your computer is checked for programs that have not been used for a long time. These are then displayed with the recommendation that they are removed so that they do not slow down your computer unnecessarily. Based on your user behavior, you specify here after how many days a program that has not been used is considered to be potentially unnecessary and displayed with the recommendation that it is removed.

Changing a Profile

You can change the settings for your profile later at any time, by going to **PC performance** in the **Dashboard** category of the Start Center and clicking the **gear wheel** button (located just next to the **Show details** button).

Alternatively, you can click on the **Change profile** button at the top left of the **Increase performance - details** window.

Note that you cannot confirm your profile until you have entered all the necessary information.

7.3. Fixing Problems

In this chapter, you will find out **how** to use the **Fix problems – Details** feature to fix problems that affect the health of your system and **why it is important to do so**.

To find out whether there are problems affecting your system's health, go to the Start Center in the **Dashboard** category and look at the **PC health** status field.

For example, checks are made to see if key settings have been set correctly in Windows, if there is enough free memory on your system drive, if important security programs are installed and if there are any new Windows updates. If you have hidden some problems, these do not impact the status any more. Open the details window by clicking on **Fix Now**.

Overview

The details window lists the problems found. When you select a problem from the list, the detail panel gives you a short description of the problem and a suggestion for a solution.

Fixing Problems

For each problem, you can decide whether you want to solve it straightaway or hide it. The easiest way is to fix problems by clicking on the link for the suggested solution.

Hiding Problems

If you don't want to fix a problem immediately, click **Hide problem**. Now you can select whether you want to hide it permanently or only for 30 days.

7.4. System Protection

In the following chapters, you will find out **how** to use the **AVG Rescue Center** module to undo changes that you made with **AVG PC TuneUp**. You can also use **AVG Rescue Center** to perform system recoveries, i.e. to undo changes that you did **not** make with **AVG PC TuneUp**.



System Recovery

The **AVG Rescue Center** even lets you undo changes made not by **AVG PC TuneUp** but by other applications. **AVG Rescue Center** offers integration with the Windows system recovery function for this.

Windows regularly creates restore points. Should your system stop behaving as it should, you can revert at any time to one of the restore points. The previous system status is then restored and any changes made after this point are lost.

Where Can I Find the AVG Rescue Center?

The **AVG Rescue Center** is always within reach: To access the **AVG Rescue Center**, press **Undo changes** button that can be found in the **Dashboard** category of the Start Center (Rescue Center area). This button is also located in the individual modules.

7.4.1. Undoing Changes

Start the **AVG Rescue Center** module by clicking **Undo changes** button that can be found in the **Dashboard** category of the Start Center (Rescue Center area).

Alternatively, you can start the module by going to **All functions** in the Start Center and selecting the **Undo changes** entry under **AVG PC TuneUp**.

In the right-hand column, **AVG Rescue Center** shows you a list of all saved backups arranged by module or date and specifies for each entry the number of modified settings, time of change and the disk space freed up by the changes.

Showing details

The **Details** button takes you to an exact log of the changes carried out. However you can only view this log. You cannot undo only selected changes. For this reason you may have to restore a number of superfluous files before you can use just one file again that you deleted by accident.

Delete

If you are quite certain that you no longer need a backup, you can delete it permanently using this button.

Restore

Use this button to restore the system to its status before the selected backup.

7.4.2. System Restore

Start the **AVG Rescue Center** module by clicking **Undo changes** button that can be found in the **Dashboard** category of the Start Center (Rescue Center area)

Alternatively, you can start the module by going to **All functions** in the Start Center and selecting the **Undo changes** entry under **AVG PC TuneUp**.

Click on **System Recovery**.



In the right-hand column, **AVG Rescue Center** shows you a list of all stored backups and also the time at which each entry was changed.

Create Backup

Use this button to create a system restore point. Give this point a name by which to remember this system status at a later time.

Since a system restore point saves the status of your configuration and system files, you are advised to create a system restore point before making any significant changes to the system (such as installing a program). If something goes wrong during installation or your computer no longer works the way it used to, you can always restore it back to its original status at any time.

Delete

If you are quite certain that you no longer need a backup, you can delete it permanently using this button.

Restore

Use this button to restore the system to its status before the selected backup. You will need to restart your system.

This function is useful if your computer no longer functions properly following a change to the system.

First, select a restore point that is as recent as possible, in order to avoid undoing too many system changes.

7.4.3. Changing Settings

You can change some of the settings of the **AVG Rescue Center**. In the **AVG Rescue Center** click on the **Settings** button.

Alternatively, you can enter these settings from the Start Center. In the [Menu Bar](#), click **Settings** and find the **Rescue Center** protection item (in the list on the left side of newly triggered configuration dialog).

Rescue Center Protection

Every **AVG PC TuneUp** module is protected by **AVG Rescue Center** as standard. You can disable this support for individual modules by clearing the relevant checkboxes.

Backups

Here you can set how long the individual backups of **AVG Rescue Center** should be stored for. The standard setting is for backups to be automatically deleted after two weeks and for a maximum of 60 backups to be stored.

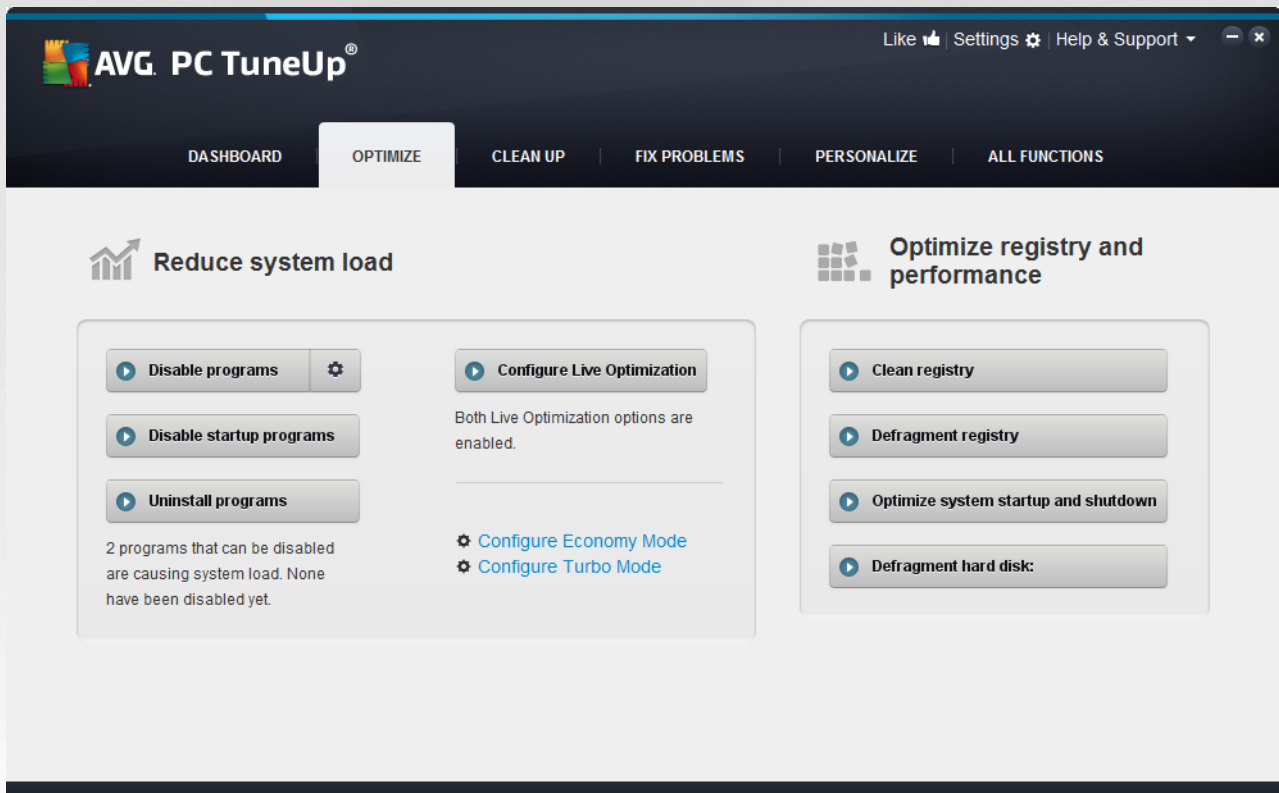
Do not restrict the AVG Rescue Center protection too much in order to save disk space. In the event of problems, the protection function is very useful as a last resort and generally more important than saving a small amount of space on your hard disk.



8. Optimize

Your computer does not always work quite how you would like it to. Often it seems to take an eternity to call up individual programs or to save files and you start to doubt the performance capabilities of your computer. But in many cases this has nothing to do with the hardware. The problem is caused by the programs that are started, without you being aware of them, or remnants of programs that were not completely removed from your computer during an uninstallation process.

All modifications to your system will be monitored by AVG Rescue Center and can be undone if necessary.



Reducing System Load

The **Reduce system load** area is devoted to dealing with your installed programs and services. Its functions extend from disabling startup programs that have no impact whatsoever on the actual program, and manually uninstalling individual programs, to automatically turning off entire function areas. But that is not all! In this area, you will also find a link to an unprecedented function. Have you ever had an intelligent alternative to uninstallation? Now you do – **AVG Program Deactivator** a module that uses our unique **AVG Programs-on-Demand Technology**.

For more information, see [Reducing System Load](#).

Optimizing registry and performance

Being able to disable or uninstall programs is an important criterion for optimizing system performance. But this may not achieve a great deal if your Windows system is still full of "relics", i.e. remnants of programs that were uninstalled long ago but were not fully removed. You can use our cleanup program to only keep entries on the computer that really belong there - then complete your tidying with a more intelligent arrangement of the



system entries and data to ensure a quicker startup of programs and files.

For more information, see [Optimizing registry and performance](#).

8.1. Reducing System Load

Disabling Programs

The **AVG Program Deactivator** module shows you to what extent the installed programs are loading the system at various times (system startup, operation, shutdown). Thanks to the new **AVG Programs-on-Demand Technology**, you can now disable any performance-sapping programs easily and no longer need to uninstall them immediately. This means you can keep the programs on your computer in case you need them again at a later date.

For more information, see [Disabling Programs](#).

Disabling Startup Programs

The **AVG StartUp Manager** module gives you recommendations and additional information about programs that are automatically run on your computer when the system starts up. You can disable the automatic startup of individual programs and thereby speed up your computer's startup.

For more information, see [Disabling Startup Programs](#).

Uninstalling programs

The **AVG Uninstall Manager** module shows all the programs installed on your computer together with detailed information about them. For example, you can identify which programs you only rarely use and uninstall these if necessary. This helps you clean up your computer, gain disk space and increase system performance.

For more information, see [Displaying and Uninstalling Programs](#).

Rating Function for Programs

The three modules mentioned above contain the useful **Rating function for programs**. The experience of many **AVG PC TuneUp** users shows you which programs have been classified as useful by other users and helps you to decide which startup programs you want to disable and which programs you want to disable or uninstall.

Configuring Live Optimization

AVG Live Optimization consists of two intelligent optimization methods that monitor the load on your computer in real time and can thereby intervene if necessary to avoid sudden drops in performance. Both help to speed up your system - one increases the startup speed of programs, the other increases the response rate of the computer.

This is done by intelligently prioritizing the programs that are running. If your computer is currently working at near full capacity, the programs you access will start up more rapidly by briefly assigning them a higher priority. And if a background program suddenly gets carried away and requires a particularly high amount of



computing power, it will be assigned a lower priority so that the programs you are currently using will run more smoothly. This also enables speedy workflows even at high capacity.

Configuring **Economy Mode**

The **AVG Economy Mode** from **AVG PC TuneUp** is an intelligent module for saving energy, which can also increase the performance of your computer at the same time. **AVG Economy Mode** provides immediate energy saving whenever you need it. When you switch your computer to **Economy Mode**, it reduces the energy used by hardware and the tasks, programs and features that are running in the background and not strictly necessary. They are stopped or turned off, which can reduce energy consumption considerably.

Configuring **Turbo Mode**

From here you can open the configuration wizard, which enables you to set the **Turbo Mode** to suit you. You can choose which tasks, programs and functions can be temporarily disabled so as to increase performance while **Turbo Mode** is on. The more you allow to be switched off, the better the gain in performance will be. If you change your mind later, you can call up this configuration wizard at any time by clicking on the small wrench icon on the right next to the **Turbo Mode** switch or clicking **Turbo Mode** in the **Settings** menu.

For more information, see [Configuring Live Optimization](#).

8.1.1. Disabling Programs

In this chapter, you will find out **how** you can use the **AVG Program Deactivator** module to disable programs that place a load on your system at various times (at system startup, during operation and at shutdown) and **why it is useful to do so**.

Until now, users only had two options for dealing with unnecessary programs: They could either remove them from the system completely or accept that their background programs would continue to slow it down. After a program is uninstalled, there is always the risk that files that were dependent on it will no longer be able to be started. If the program is left on the computer, it is always available if it is needed, but continues to impair system performance.

AVG Program Deactivator not only reduces the load of programs at system startup, but also during normal operation and at shutdown, where the load is a result of services and tasks belonging to one program.

AVG Programs-on-Demand Technology

Thanks to the **AVG Programs-on-Demand Technology** there is now a third option: Disable programs that are no longer required first and see if you can continue to work without them. If you notice that you need a program again, it is no longer a problem. You can start the program as usual - the **AVG Programs-on-Demand Technology** reactivates the program in the background, as if you had never disabled it. With the improved **AVG Programs-on-Demand Technology**, programs are even disabled automatically after they are used, so that the load on your system is always kept as low as possible.

Design of AVG Program Deactivator

AVG Program Deactivator is divided into three areas: the **All installed programs** area, the **Load from installed programs** area and the **Details** area. You will now find the additional **Introduction** button in the menu bar, which allows you to open the introduction to **AVG Program Deactivator** at any time.



All installed programs

In the **All installed programs** area, you can see an overview list of all the programs installed on your system together with their load status. In the **Name** column, the programs are sorted according to their load: high, medium or low. Programs that do not place any load on the system have the status "none" and are not listed by name. The value for the load is always the highest value for startup, operation or shutdown. In the **Status** column, you can see the current status of the programs.

Load from installed programs

In the **Load from installed programs** area, you will find three graphs that are designed to give you a visual overview of the load on your system: The left-hand graph shows you the load on system startup, the centre one the load during normal operation of your PC and the right-hand one the load when shutting down. A legend with explanations is provided underneath the graphs. If a program is selected in the list, this is shown by a program icon next to the graph.

Details

In the **Details** area, you can see the name of the selected program, its current status and the load on the system from that program. You can use the switch to enable or disable the program. If no program is selected, you will see an overview here showing how many programs are enabled/disabled or relevant to the system. If several programs are selected, the details area shows the number of programs with the various statuses. The status shown next to the switch is the predominant status. In the next column, you can see the current status of the program in question.

Possible Statuses of Programs

In **AVG Program Deactivator**, there are four different statuses for programs.

Desired status

In the **Desired status** column, you can see the status that you have selected for your programs. You can change the desired status by clicking on the switch.

Enabled

The program is fully enabled and is having an impact on the load on your computer.

Disabled

The services of the program that run continuously in the background have been turned off.

Required by system

This is a program that **AVG PC TuneUp** has classified as relevant for the security or proper operation of your system and the disabling of which could have serious consequences. Therefore, it is not possible to change the status of one of these programs and the switch is grayed out.

Impactless

The program cannot be disabled because it does not have a negative impact on the system load. For this reason, the switch is grayed out and cannot be changed.



Current status

In the **Current status** column to the right, there is further information about the current status of a program.

Permanently enabled

The program is fully functional and is causing a system load even when you are not using it.

Disabled until program startup

The program is fully disabled and will not cause any load on the system until you start it again manually. It will be disabled again afterwards.

Disabled after idling or restart

The program cannot be turned off during normal operation; **Program Deactivator** will disable it automatically the next time the computer is idle or the system is restarted.

Disabled after restart

The program cannot be turned off during normal operation; **Program Deactivator** will disable it automatically the next time the system is restarted.

Cannot be disabled

This is a program that **Program Deactivator** has classified as relevant for the security or proper operation of your system and the disabling of which could have serious consequences. Therefore, it is not possible to disable it.

Does not cause system load

The program cannot be disabled because it does not have a negative impact on the system load.

Changing Settings

If you have turned off the setting **Disable again automatically when closed (recommended)** under **Program Deactivator** in the **Settings**, your programs may have the following status:

Current status

Enabled

The program is fully functional.

Disabled

The services of the program that run continuously in the background have been turned off.

Scheduled to be disabled

The program will be disabled automatically as soon as this is possible.



Required by system

The services of the program that run continuously in the background have been turned off.

Impactless

The program cannot be disabled because it does not have a negative impact on the system load.

Status description

To the right of the **Current status** column, the **Status description** column contains further information about the current status of the program in question.

How to Disable Programs

Launch the **AVG Program Deactivator** module by going to the **Optimize** category in the Start Center and selecting **Disable programs** under **Reduce system load**.

Alternatively, you can start the module by going to **All functions** in the Start Center and selecting the **Disable** entry under **Installed programs**.

The **AVG Program Deactivator** module uses AVG Programs-on-Demand Technology, which reduces the load on your system and therefore increases system performance.

How to Disable Programs

1. Select a program in the list that has the status **Enabled**.
2. Disable the program using the switch in the status column or in the details area or click on the **Disable** button in the toolbar.

How to Enable Programs

1. Select a program in the list that has the status **Disabled**.
2. Enable the program using the switch in the status column or in the details area or click on the **Enable** button in the toolbar.

How to Enable or Disable More than One Program

If you select more than one program at the same time, the possible action depends on the predominant status. For example, if two selected programs are disabled and one is enabled, you can only enable the programs. However, with two enabled and one disabled program, you can only disable the programs.

Following the action, a window is shown in the display area to the left informing you of the result of your action.



How to Configure Program Deactivator

In the upper right corner of the Start Center you can find the menu bar. By clicking on **Settings** you open the central setting dialogue of **AVG PC TuneUp** which offers you a list of the most important settings of **AVG PC TuneUp** along with their respective options, sorted by modules.

Click on **Program Deactivator** on the left in order to open the settings for **AVG Program Deactivator**.

Load Points

The **AVG Programs-on-Demand Technology** calculates the load on your system based on an internal points system. For this, **AVG PC TuneUp** determines the background programs associated with each program, i.e. the programs or services that were installed together with the actual program and are then continually run without the user's knowledge, "stealing" processing power. The more background programs there are for a program, the more this program burdens the computer. The **AVG Programs-on-Demand Technology** calculates the amount of executed programs at different times: system startup, operation and shutdown. The display in the **Load** column takes the highest of these three values.

8.1.2. Disabling Startup Programs

In this chapter, you will find out **how** you can use the **AVG StartUp Manager** module to speed up the startup and working speed of your computer and **why it is important to do so**.

Many programs start automatically in the background when you turn on your computer. This makes perfect sense for important functions and services like the virus scanner or the configuration console of your sound card.

However, programs often start automatically in the background that you require only very occasionally or never.

Every time a program starts automatically not only does it slow down the Windows system startup but the individual program parts that are always running in the background also slow down your computer. Some of these programs can also irritate you by displaying advertising messages.

More Information About Startup Programs

When installed, some startup programs are entered in the Start Menu from where they can be easily removed. However, most startup programs enter themselves directly in the registry and are not to be found in the startup folder. Often during system startup and user logon, scheduled tasks are used to start programs automatically.

AVG StartUp Manager finds all startup programs, regardless of how well hidden their start command is. For every startup program it also supplies a detailed **description** and an **evaluation** of the necessity of starting this program automatically.

AVG StartUp Manager does not just allow you to enable or disable startup programs, it also tells you about the individual programs and provides recommendations for every startup entry.

Note that disabling startup does not remove the program itself. It only disables the startup and therefore



speeds up system startup and the speed of your computer.

How to Configure Your System Startup

Launch the **AVG StartUp Manager** module by going to the **Optimize** category in the Start Center and selecting **Disable startup programs** in the **Reduce system load** area.

Alternatively, you can start the module by going to **All functions** in the Start Center and selecting the **Disable startup programs** entry under **Installed programs**.

Before the program starts, the startup screen may appear for the Rating function for programs. Here you can decide whether to enable this feature and click OK.

When **AVG StartUp Manager** starts up a list of all Startup programs opens. When you use the module for the first time, all entries are enabled. This means that these programs will automatically start in the background every time the system is started.

In **AVG StartUp Manager** you can choose from the following functions:

Disabling Automatic Program Startup

This prevents the program from starting automatically in the background when you next start up the system. The entry remains in the list however, meaning that you can turn automatic startup back on at any time.

1. Select a startup program from the list.
2. Disable it using the button or from the toolbar.

If, despite our Tips for Optimizing System Startup, you are not sure whether or not you should disable startup programs, we recommend that you disable one startup program only, restart your computer and start the programs you use in the usual way. This helps you find out whether the automatic startup really is unnecessary. If something doesn't work properly the next time you start Windows, select the check box again. If everything is working as it should, you can disable the next startup program.

Enabling Automatic Program Startup

This starts the program automatically in the background when you next start the system. Afterwards, you can disable automatic startup at any time again.

1. Select a startup program from the list.
2. Enable it using the switch or the button in the toolbar.

Adding a startup program

To have the system automatically run additional programs on system startup, simply add them to the



list.

1. On the toolbar select the **Add** button. Alternatively you can right-click to open the context menu and select the **Add program** entry.
2. From the list, select the program that is to start automatically each time the system is started. If this does not happen, click Browse and select the program you want from the list that opens.

Removing a startup program from the list

If you are sure that you do not want a program to be started automatically, you can remove it from the list. You can add it back to the list at a later stage by clicking **Add** or using **AVG Rescue Center**.

1. Select a startup program from the list.
2. On the toolbar, select the **Delete** button. Alternatively you can right-click to open the context menu and select **Delete**.

Tips for Optimizing System Startup

As the name suggests, a startup program is one that automatically starts up every time you start up your computer. For this reason, it is always active in the background and occupies your system's resources, even if you never use the program. This makes perfect sense with a virus scanner, for example. On the other hand, some other startup programs could place an unnecessary load on your system.

The fewer the programs that start up automatically in the background, the faster your system will start up. In addition, your computer will run faster if there are no unnecessary programs active in the background.

What Guidance Does AVG StartUp Manager Offer?

For each program, decide based on the following information whether it should start automatically in the background on startup.

Evaluation

For most startup programs, **AVG StartUp Manager** provides an **evaluation** showing you whether an automatic startup of the program is **necessary**, **unnecessary** or **optional**. Thanks to a database maintained by the AVG team, all security-related programs, for example, will be classified as necessary. Well-known unnecessary startup programs will be classified as unnecessary. Other programs that appear incorrectly in the list will also be considered as unnecessary. This is the case, for example, if an entry in the list refers to a program that has already been uninstalled.

This classification can result in many programs being classified as optional. In this case, the decision is based on your usage behavior. The description, **online search** or the **Rating function for programs** will help you further with this.

To learn more about how the Rating function for programs can help you make the decision, see [Rating Function for Programs](#).

Description



If you select a startup program in the list, the database will supply a **description** of the program to make the decision easier for you.

In the case of very unusual programs, **AVG StartUp Manager** might not recognize a program. If so, you can obtain information on this program by searching **online** via a link.

In addition, you can also help ensure that a description of this program appears here in future, by providing AVG with information on this program via the **Report program** link.

Rating

The **Usefulness** column provides you with information on how useful you and/or other users of **AVG PC TuneUp** find the program. If you have not yet provided a rating, you can rate it now. **AVG PC TuneUp** calls up the ratings of other users from a server database and displays them. These ratings are automatically updated regularly.

If you are still unsure, despite our guidance, whether you should disable a startup program, we recommend that you disable just one startup program, reboot the computer and start up the programs you use in the usual way.

If something does not work properly following the restart, all you have to do is select the checkbox again. If everything is fine, you can disable the next entry and enjoy a faster system startup.

8.1.3. Displaying and Uninstalling Programs

In this chapter, you will find out how you can use **AVG Uninstall Manager** to display the programs installed on your computer, **why** you might want to uninstall them and **how** to do so.

Over time, you accumulate a large number of programs on your computer, many of which you probably do not even use. So that your Windows system can run quickly and smoothly, you should regularly remove unused or unnecessary programs.

Each time you install a program on your computer, it becomes deeply anchored in the Windows system where it remains until you uninstall it completely. If you no longer require a program, it is not enough just to delete the program folder or the desktop icon that you use to open it.

Most programs distribute their files across several locations on your hard disk and also make entries in the Windows registry.

AVG Uninstall Manager lets you rapidly determine what programs you rarely use or which take up an especially large amount of space. You can **show** all installed programs sorted according to different aspects and then, using the useful additional information about when you installed the program and how often you use it, decide whether you still need it or should **uninstall** it.

How to Uninstall Programs

Launch the **AVG Uninstall Manager** module by going to the **Optimize** category of the Start Center and selecting **Uninstall programs** from the **Reduce system load** area. Alternatively, you can start the module by going to **All functions** in the Start Center and selecting the **Uninstall** entry under **Installed programs**.

Before the program starts, the startup screen may appear for the Rating function for programs. Here you can decide whether to enable this feature and click OK.



AVG Uninstall Manager shows you a list of all installed programs. In the menu bar, click **Organize** to sort the table by column or select a filter under **View** to display only selected programs. This will help you quickly identify what programs you no longer use or which take up the most space.

If you select an entry from the list, additional information about the program is displayed in the **Details** area to the right. You will see details of the manufacturer, installation date, date of last use, size of program files on your hard disk, system usage and the program rating.

If, despite the statistical data that AVG Uninstall Manager shows you, you are not sure whether you wish to uninstall a program because you do not know what it contains, click on Online search in the toolbar. A web page opens displaying the results of the search for the program selected in the list. This page provides detailed information on the program. This information will also help you to decide whether you should uninstall a program or not.

The **Usefulness** column is also helpful for your decision-making process. This provides you with information on how useful you and/or other users of **AVG PC TuneUp** found the program. If you have not yet provided a rating, you can rate it now. **AVG PC TuneUp** calls up the ratings of other users from a server database and displays them for you. These ratings are automatically updated regularly.

Click **Uninstall** to remove a program.

To remove a program correctly from your computer, highlight the entry and click **Uninstall** in the toolbar. You can also double-click on the entry.

The uninstall routine that is now called up varies from program to program. None of these programs merely deletes the files from the hard disk – they also remove all desktop icons, the entries in the Start Menu and the entries in the registry. Follow the instructions for the uninstallation procedure to complete the process.

If you do not want to uninstall a program and you wish to be sure that it does not appear in this list in the future, select **Remove entry** from the context menu of an entry. You will then no longer be able to uninstall the program using **AVG Uninstall Manager**. Note that this does **not** uninstall the program.

8.1.4. Configuring Live Optimization

In this chapter, you will find out **how** and **why** you can increase the performance of your computer by turning on **AVG Live Optimization**.

AVG Live Optimization consists of two intelligent optimization methods that monitor the load your computer is under in real time and can thereby intervene if necessary to avoid sudden drops in performance. Both optimization methods work to accelerate performance - one increases the computer's response rate, the other the speed at which programs start up - but only when necessary.

This is done by intelligently prioritizing the programs that are running. If your computer is already working at near full capacity and you start a program, this program will start more rapidly if it is briefly assigned a higher priority. And if a background program suddenly gets carried away and requires a particularly high amount of computing power, it will be assigned a lower priority so that the programs you are currently using will run more smoothly. This enables work to be carried out quickly, even at high capacity.

Start the **AVG Live Optimization** module by going to the Start Center and clicking on the **Configure Live Optimization** entry on the right-hand side of the **Dashboard** category.

Alternatively, you can open the module by going to **All functions** in the Start Center and selecting the



Configure Live Optimization entry under **AVG PC TuneUp**. Or click on **Settings** in the Start Center menu bar and select the **Live Optimization** area.

Here you can select the two optimization methods. Since both of these are intelligent optimizations in real time, they do not always take effect immediately. Rather you specify here that from now on the load under which the computer operates is to be monitored so that both optimizations can apply if the need arises.

Select here the optimization methods to be carried out where necessary:

Increasing the Response Rate

This optimization method monitors all background processes and gives them lower priority if they take up too much computer power. This ensures an optimal response rate and prevents juddering by windows or programs. This intelligent optimization identifies need and ensures that the computer's response rate is always optimum.

The following pictures represent the inside of your computer before and after the **Increase response rate** option is enabled. Here you can see how the load on your PC is reduced:



In addition to those programs that you are currently using (green), many others are also running in the background that are really not that important for your work (blue). If such background processes suddenly start to require a great deal of processing power, they are assigned a lower priority so that your other programs can continue to run smoothly.

Speed up the startup of my programs

This optimization method intervenes if you start up a program manually when the computer is already under heavy load. For a short period immediately after the program has started, processing power is temporarily redistributed, giving the program in question a separate performance boost. This boost is achieved by temporarily prioritizing the program in question.

The following pictures represent the inside of your computer before and after the **Accelerate program startups** option is enabled. Here you can see how a newly started program receives a particular performance boost:



For a short period immediately after the program is started (orange) the processing power of the computer is temporarily redistributed, giving the program in question a separate performance boost. This boost is achieved by temporarily prioritizing the program in question. No other programs (green and blue) are affected.



How do I know when Live Optimization was enabled?

The great thing about Live Optimization is that it works intelligently in the background. Whenever one of these two optimization methods is improving the performance of your PC in the background, this is also indicated by the icon in the notification area of the taskbar.

8.2. Optimizing registry and performance

Cleaning the Registry

The **AVG Registry Cleaner** module specifically looks for faulty entries in the central database of your Windows system - the registry - and either repairs or deletes them. Cleaning up your registry like this frees your system of unwanted ballast and errors so that it can work faster and more efficiently.

For more information, see [Cleaning the Registry](#).

Defragmenting the Registry

Use the **AVG Registry Defrag** module to have the Windows system central database - the registry - rewritten. This involves compressing it so as to make it much smaller. This little trick boosts the performance of Windows.

For more information, see [Defragmenting the Registry](#).

Removing Broken Shortcuts

By using the **AVG Shortcut Cleaner** module, your computer is cleaned up in no time because invalid shortcuts are deleted from your Desktop, the Start menu and Windows Quick Launch bar. For example, desktop icons that no longer serve a purpose because they have been left behind after programs were uninstalled.

For more information, see [Removing Broken Shortcuts](#).

Accelerating System Startup and Shutdown

Using the **AVG StartUp Optimizer** module, you can check your computer for anything that may be unnecessarily slowing down system startup or shutdown. You will receive the results of this check in the form of recommendations and you can either choose to apply all of them immediately or first look at them carefully one by one.

For more information, see [Optimizing System Startup and Shutdown](#).

Defragmenting the Hard Disk

When defragmenting, the **AVG Drive Defrag** module analyzes the hard disk space and runs defragmentation if necessary. During defragmentation, the disk space is reorganized by intelligently rearranging the individual blocks of data. This significantly increases the speed of system startup and the loading times for documents and programs. **AVG Drive Defrag** gives you the choice of two different defragmentation types: one is particularly thorough, the other is particularly quick.



For more information, see [Defragmenting the Hard Disk](#).

8.2.1. Cleaning the Registry

In this chapter, you will find out **how** you can use the **AVG Registry Cleaner** module to clean the registry and **why it is important** to do so.

The registry is the heart of a Windows system. It is where Windows continuously stores entries (values and keys). In addition, each newly installed program and every newly connected hardware item is entered in the registry where it records keys and values. When you start up a program, Windows does not call up this program directly. Instead it opens the program using a key in the registry, which was created there when the program was installed. This entry must also be deleted from the registry when the program is uninstalled since it is no longer required. It is often the case, however, that Windows does not delete these entries properly, which is why a great many invalid entries build up over time.

These entries are not just created when programs are installed, but also during many other tasks. For example, the history list of recently used documents in the Start menu works using the entries in the registry. These references become invalid when you move or delete a document. Since Windows does not clean the registry regularly, we recommend you do it yourself with **AVG Registry Cleaner**.

By cleaning your registry regularly your whole system and all your programs will be more stable. This is why this is one of the functions that **AVG PC TuneUp** can also run regularly as part of the **Automatic Maintenance**.

Before cleanup can take place, the registry must be checked for problems. You can either fix these all at once or individually.

How to Clean the Registry

Launch the **AVG Registry Cleaner** module by going to the **Optimize** category in the Start Center and selecting **Clean registry** from the **Optimize registry and performance** area.

Alternatively, you can start the module by going to **All functions** in the Start Center and selecting the **Clean** entry under **Registry**.

First, your registry must be checked for problems. Select one of the two types of scan:

1. Full Scan

We recommend the complete scan because this checks the whole registry for problems.

2. Custom scan

Scanning the registry can take several minutes. While the scan is in process, you can monitor its progress.

If problems are found, you have two options:

Display problems

Click **Display problems** to display detailed descriptions and **exclude any individual problems from**



the cleanup (see Additional Functions in AVG Registry Cleaner Main Menu).

Fix Problems Immediately

Select **Fix problems immediately** and click **Next** to fix all detected problems immediately. Your registry is now free from all unnecessary ballast and your system is more stable.

If after the cleanup has finished, the **Check again** button appears, find out more information here:

Check Again

Sometimes, the **Check again** button appears and the wizard recommends that you check your system again. This always happens if new entries in the registry have been made invalid by the cleanup. This is not an error in the module, but a chain reaction that can occur primarily in the **Program components** and **File types** areas.

Example:

In the registry, entry A points to entry B, which in turn points to the missing file X. In the first scan, **AVG Registry Cleaner** determines that entry B is invalid because file X cannot be found. Entry B is deleted during cleanup. This in turn makes entry A invalid, as it points to the now deleted entry B.

1. Click **Check again**.

These two categories alone will be analyzed again.

2. Click **Finish** to close the wizard.

Repeat the cleanup as often as required. As soon as no new problems are found, you can exit the module - with the confidence that you have removed a great deal of junk from your system.

If no problems have been found, click **Finish**. This takes you to the **AVG Registry Cleaner** main window.

What is Checked?

The following table shows you what areas of the registry **AVG Registry Cleaner** checks during the full scan. You can select from these during the user-defined scan.

| Area | Description |
|------------------|---|
| Audible Signals | For certain system or program events such as error messages, sound files are played. These are played by accessing the corresponding entries in the registry; however these entries are invalid once the sound files no longer exist. |
| Startup Programs | Many programs start automatically together with Windows (e.g. virus scanner). This takes place via entries in the startup section of the registry. When such programs are uninstalled, these entries are often not deleted. |



| | |
|--------------------|--|
| File Types | Entries in this area of the registry link one or more file extensions (e.g. .txt or .doc) with various information (such as the program that should be used to open them). Such entries can become invalid through the uninstallation of programs, for example. |
| Database Drivers | During installation, some programs store entries on database drivers and data sources in the registry. These entries can become invalid through the uninstallation of these programs or the moving or deletion of individual data sources. Often, invalid entries are created during installation itself. |
| Common Files | This part of the registry contains references to files and program libraries (DLLs), to which several programs normally require access. When such programs are uninstalled, these entries are often not deleted. |
| Help Files | Many programs record in the registry the location of their help files. When such programs are uninstalled, these entries are often not deleted. |
| Installed Programs | Every program leaves behind an entry in this area of the registry. The list of all programs in the Control Panel is compiled from these entries. When programs are uninstalled, these entries are often not deleted and inconsistencies arise in this list. |
| Program Settings | Each program installed on the computer can create entries with program-specific information in the registry (e.g. data or program paths). When programs are uninstalled, these entries are often not deleted. |
| Program Extensions | This area of the registry contains references to extensions such as audio and video codecs or Internet Explorer add-ons that enhance the functionality of individual programs (e.g. with new menu entries or new toolbar entries). If these programs or extensions are uninstalled, these entries are often not deleted. |
| Program Components | Many Windows programs access ActiveX and COM components using entries in this area of the registry. These entries are created when programs like this are installed, but are often not deleted during uninstallation. Some programs even create invalid entries during installation. |
| Program Paths | The installation folders of some programs are stored in the registry to allow these programs to be run directly via "Start -> Run". When such programs are uninstalled, these entries are often not deleted. |
| Fonts | Windows stores entries in this area of the registry for all fonts installed on your computer. Since these entries are often not deleted when fonts are uninstalled, Windows tries in vain to load these fonts every time the system starts up. |
| History Lists | Windows and many programs have history lists, which log, for example, which files you were last working on. These are stored in the registry as references. By deleting or moving the files, these entries become invalid. |
| Windows Firewall | The Windows firewall saves the programs that may accept incoming network |



| | |
|--|--|
| | connections and stores an entry for each one in the registry. These entries can become incorrect or invalid if, for example, one of these programs is uninstalled. |
|--|--|

It should be clear therefore that deleted files can leave behind a lot of "ghosts" in the registry. **AVG Registry Cleaner** finds all of these orphaned entries and can delete them in a targeted fashion. We therefore recommend that you perform the full scan.

Additional Functions in AVG Registry Cleaner Main Menu

Displaying Details and Excluding Problems from the Cleanup

If you click through the various areas in the left column, you will see a detailed **Explanation** in the top part of the window, describing how problems can occur in the area in question.

If problems are found in an area, a list of the individual problems also appears with further information. Select an entry in the list in order to display a more extensive analysis of the problem.

Here you can also exclude certain problems from the cleanup by unchecking the relevant checkboxes.

If descriptions of the problems are not visible, click Details in the toolbar.

Running the Cleanup

To start cleanup from the main window of **AVG Registry Cleaner**, click **Start cleaning**. If you have excluded problems from the cleanup, these will not be fixed.

If after the cleanup has finished, the **Check again** button appears, find out more information here:

Check Again

Sometimes, the **Check again** button appears and the wizard recommends that you check your system again. This always happens if new entries in the registry have been made invalid by the cleanup. This is not an error in the module, but a chain reaction that can occur primarily in the **Program components** and **File types** areas.

Example:

In the registry, entry A points to entry B, which in turn points to the missing file X. In the first scan, AVG Registry Cleaner determines that entry B is invalid because file X cannot be found. Entry B is deleted during cleanup. This in turn makes entry A invalid, as it points to the now deleted entry B.

1. Click **Check again**.

These two categories alone will be analyzed again.

2. Click **Finish** to close the wizard.

Repeat the cleanup as often as required. As soon as no new problems are found, you can exit the module - with the confidence that you have removed a great deal of junk from your system.



Functions for Advanced Users

If you are sure that you want to exclude individual areas from cleanup, or want to look at the entries in the registry or even edit them, you will find the following functions useful:

Ignore Problems

You can remove individual problems from the list so that they are not found by the analysis.

For this, perform the following steps:

1. Select a problem from the list of corresponding areas.
2. In the **Edit** menu, select **Ignore problem**.

You can also get to this function using the list entry context menu.

Include Ignored Problems Again

If you no longer wish to ignore a problem, you can add it back to the analysis.

For this, perform the following steps:

1. In the File menu, select Ignored problems.
2. Highlight it in the list and click **Remove**.

Show Entries in the Registry

From the detailed problem list for an area, you can go straight to the relevant entry in the registry for every problem.

For this, perform the following steps:

1. Select a problem from the list.
2. In the **Edit** menu, select **Problem details** and **Go to key**.

You can also get to this function using the list entry context menu.

Editing the Registry

In the toolbar, click **Registry Editor** to directly call up the **AVG PC TuneUp** module for editing the registry.

8.2.2. Defragmenting the Registry

In this chapter, you will find out **how** you can use the **AVG Registry Defrag** module to reduce the size of the registry by defragmenting it and **why it is important to do so**.

The registry is the heart of a Windows system. It is where Windows continuously stores entries (values and keys). In addition, each newly installed program and every newly connected hardware is entered in the registry where it records keys and values.



This causes the registry to get bigger and bigger. However, the bigger the registry, the longer the system needs to find certain information requested at any given moment by a program - Windows then becomes slower. When a program is uninstalled or when the registry is cleaned up, these keys and values are usually deleted, but despite this the registry does not get any smaller. Why is this? The space previously taken up by a deleted key continues to exist in the registry - even if it is no longer used. At some point your registry then looks like a piece of Swiss cheese - full of holes.

This is a real waste of space at the expense of system performance - not just on the hard disk but also in the memory. **AVG Registry Defrag** is able to compress the registry so that it becomes much smaller. This function increases the stability of your Windows system.

AVG Registry Defrag analyzes the registry and creates a completely new version of it containing only the intact data, in the correct order. The old registry is deleted following this step and automatically replaced with the new version when the computer is restarted.

How to Defragment the Registry

Start the **AVG Registry Defrag** module by going to the **Optimize** category in the Start Center and selecting **Defragment registry** in the **Optimize registry and performance** area.

Alternatively, you can start the module by going to **All functions** in the Start Center and selecting the **Defragment** entry under **Registry**.

An introductory screen is displayed. Click **Next** to start the analysis.

AVG Registry Defrag determines how heavily fragmented the registry is and whether an optimization is necessary.

Before the analysis, a message appears advising you to close all other programs. During the analysis, **AVG Registry Defrag** turns the screen gray and displays a wait dialog. A small clock flashes in the upper left corner of this window showing you that the module is still working. A progress bar is also shown to inform you of the progress of the analysis. There is no need to worry if the progress bar does not move for several minutes.

Choose when you want to perform the optimization. The module shows you the analysis results. If there is potential for optimization, you can find out here by how many percent and how many kilobytes the size of the registry can be reduced.

AVG Registry Defrag cannot rewrite the registry when it is running, but only immediately after Windows has started up. Now choose whether you would like to **restart the computer now** or whether you would prefer to allow the optimization to run automatically **next time Windows starts up**. Please note that optimization can take several minutes.

If you immediately decide against the optimization or were only interested in the analysis results from the outset, you can exit the program by clicking **Cancel**.



8.2.3. Optimizing System Startup and Shutdown

In this chapter, you will find out how to optimize the startup and shutdown of your computer **in next to no time**.

Here you receive recommendations for disabling unnecessary startup programs. These recommendations help to optimize system startup and shutdown.

For example, common startup services that are not needed immediately after system startup are simply scheduled to start up at a later time. This still ensures that you will not lose these functions, but they no longer delay system startup unnecessarily. The waiting time for services to shut down is also reduced. Services will therefore close faster when shutting down and the shutdown procedure itself will be faster.

You can either apply all of these recommendations immediately, or look at the detailed descriptions first and then decide one by one.

How to Optimize System Startup and Shutdown

Launch the **AVG StartUp Optimizer** tool by going to the **Optimize** category in the Start Center and selecting **Optimize system startup and shutdown** from the **Optimize registry and performance** area. The **AVG StartUp Optimizer** window is displayed.

Alternatively, you can start the module by going to **All functions** in the Start Center and selecting the **Optimize system startup and shutdown** entry under **Recommendations**.

You may first have to enter information for your **profile** at this point in order to obtain tailored recommendations.

Which services and devices do you use on this computer?

Here you can switch off functions that you do not use. It identifies which functions and services you have already set up and only recommends those that are not being used.

For example, if you never use a printer, you can turn off all background programs that are related to print control. Simply specify this here.

If you never need to access a company network or domain, you can turn off all related background programs and services. Simply select the applicable answer from the list.

The more unnecessary features you disable here, the quicker your computer will start up and work, because – after this optimization – Windows will no longer run these background programs that start up automatically and are constantly active.

You can change the setting you make here at any time by clicking on "Change profile" at the top right of **AVG StartUp Optimizer**.

Which services and devices do you use on this computer?

Here you can switch off functions that you do not use. It identifies which functions and services you have already set up and only recommends those that are not being used.



For example, if you never use a printer, you can turn off all background programs that are related to print control. Simply specify this here.

If you never need to access a company network or domain, you can turn off all related background programs and services. Simply select the applicable answer from the list.

The more unnecessary features you disable here, the quicker your computer will start up and work, because - after this optimization - Windows will no longer run these background programs that start up automatically and are constantly active.

You can change the setting you make here at any time by clicking on "Change profile" at the top right of **AVG StartUp Optimizer**.

Overview

This view provides you with an overview of any optimization recommendations found. You can apply them all by clicking once on **Optimize all**.

Details

Click on a recommendation or on the **Details** link to see detailed descriptions of the individual recommendations. Alternatively, switch to the **Details** tab. Here you can apply all recommendations by clicking once on **Optimize all**.

Click on a recommendation in the "Optimization recommendations" column. A description of the program and the recommendation are displayed in the right-hand area of the window. If you wish to allow the optimization, click on **Apply recommendation** at the bottom right.

Hiding and Showing Recommendations

If you do not want to accept a recommendation, click **Hide recommendation**. Now you can select whether you want to hide it permanently or only for 30 days. The number of hidden recommendations is always displayed in the taskbar on the right. By clicking on the number displayed, you can easily **show** these recommendations again.

8.2.4. Defragmenting the Hard Disk

In this chapter, you will find out **why it is important to do so** and **how** you can use the **AVG Drive Defrag** to defragment your hard disks.

There are many reasons why a computer may become noticeably slower over time. One of them is the gradual fragmentation of the hard disk. This can be described as follows:

New files are first saved as a block to an empty hard disk one after the other. If you then, for example, deleted a file in the middle, there would be a gap in the hard disk. Windows uses this gap later to store the next file that you save to the hard disk. If this gap is not big enough, Windows then splits the file and stores the second half at another location. Over time, more and more gaps are created and more and more files are fragmented into pieces (fragments), i.e. the degree of fragmentation increases.

This really slows down the performance of your computer: Every time you call up a file, this has to be read from the hard disk, which would of course happen faster if the file was stored in one place. In technical terms: If fragmentation is high, the hard disk reading heads must always be realigned in order that they can load the individual fragments of a file.



A simple way to speed up your system is therefore to **defragment the hard disk**. As the conventional defragmentation often takes a long time, **AVG Drive Defrag** offers you two different modes. You either decide for yourself how defragmentation should take place, or allow **AVG Drive Defrag** to make the decision for you.

Find out below what exactly happens during the two defragmentation modes:

Thorough Defragmentation

This defragmentation mode arranges the newly sorted files particularly intelligently: system files that are used frequently are stored at the start of the hard disk, so that Windows can find them again in no time at all.

It is clear that this defragmentation mode will take longer than simply consolidating the files. **AVG Drive Defrag** is therefore also carried out with particularly low priority so that you can continue working almost undisturbed. This procedure speeds up the booting of Windows considerably. Frequently used programs also start faster. This noticeably increases the performance of the computer.

Fast Defragmentation

This defragmentation mode consolidates all files again so that they can be read noticeably faster.

The advantage of this method is the speed with which it is carried out: The performance of your hard disk is increased in no time at all.

How to Defragment your Hard Disk

Launch the **AVG Drive Defrag** module by going to the **Optimize** category in the Start Center and selecting **Defragment hard disk** under **Optimize registry and performance**.

Alternatively, you can start the module by going to **All functions** in the Start Center and selecting the **Defragment** entry under **Hard disk**.

Solid-state drives (SSD) are detected by **AVG PC TuneUp**. They are not analyzed or defragmented, as it is not possible to optimize solid-state drives through defragmentation and they could be damaged by defragmentation.

Select which hard disks should be checked for optimization potential.

Select how defragmentation should take place according to the analysis.

As **AVG Drive Defrag** offers two different types of defragmentation, you must specify whether the defragmentation type should be dependent on the analysis before you start the analysis.

Out of the four options, the first one is preselected because it gives you a personal recommendation after the analysis and you can **decide for yourself** how the defragmentation should be carried out. For the other three options, defragmentation starts as soon as the analysis is complete. If, however, the analysis determines that the degree of fragmentation is very low, defragmentation will not be carried out for these three options because **AVG Drive Defrag** deems it unnecessary.

Wait for result and then decide



We recommend this option for you. Once analysis is complete, you decide for each hard disk whether you would like to run a fast or thorough defragmentation. You can also decide here to go without defragmentation.

Automatically as recommended

AVG Drive Defrag makes the decision for you and defragments each hard disk as soon as the analysis is complete using the mode suited to the degree of fragmentation.

Automatically thorough

You optimize your hard disk performance down to the last detail, even if this lasts a bit longer - regardless of the analysis result.

Automatically fast

You would like to save time and defragment each hard disk particularly quickly, regardless of the degree of fragmentation.

If you have selected the **Wait for result and then decide** option, you will see a dialog where you can select how each hard disk should be defragmented. For all other options, you don't need to do anything else, as defragmentation will run automatically after the analysis.

Select a hard disk in the top area and select a defragmentation mode.

AVG Drive Defrag determines the relationship between speed and the benefits to be gained and provides you with a recommendation based on this.

Decide whether the computer should be shut down after defragmentation. Ensure that you have selected a defragmentation mode for each hard disk.

Click **Next** to start the defragmentation.

During defragmentation, you can monitor each hard disk in real time and see how the usage map changes. You can also look at the progress bar and determine the progress and how long the defragmentation has left.

For more tips and recommendations, please see [NTFS Compared with FAT](#).

NTFS Compared with FAT

Hard disks can either use the NTFS file system, as set in current Windows versions as preference, or the old FAT system as supported by the first Windows versions. Analysis of drives before defragmentation is substantially faster on NTFS drives. For FAT systems, users must wait considerably longer and can take the popular coffee break. This is just one of several reasons why the old FAT system should be converted to the modern NTFS system.

The NTFS file system (NTFS = New Technology File System) is the file system from Windows NT and its successors (e.g. Windows 2000, Windows XP, Windows Vista) right up to Windows 7. It offers an intelligently devised access protection to file levels, allows flexible management of privileges, accommodates file sizes above 4 GB, offers automatic error correction of the file system and can utilize the storage space of today's standard hard disk sizes in a considerably more efficient manner.



If your hard disks still use the FAT file system, you can carry out a very simple conversion.

Although conversion is considered very secure, you should make a backup of your saved data before attempting this.

Click the Windows Start icon to open **All Programs**, go to **Accessories** and click **Command Prompt**. If you enter `CONVERT.EXE C:/FS:NTFS` in the command line, conversion will start.

Replace C: with another drive letter to convert a different partition. If the system partition is changed, the computer will need to be restarted. In this case, follow the instructions on your screen.



9. Clean Up

In the same way as your home can get cluttered, your computer can also get clogged up with unnecessary ballast, which uses up valuable disk space. We recommend that you carry out some spring cleaning from time to time and delete unnecessary files from your system.

All modifications to your system will be monitored by AVG Rescue Center and can be undone if necessary.

| Feature | Elements | Size | |
|-------------------------------|----------|--------------|-------------------|
| Clean up Windows and programs | 1,207 | 1,574.5 MB | Open |
| Clean up browser | 3,168 | 96.6 MB | Open |
| Remove broken shortcuts | 51 | 0.1 MB | Open |
| Disable Windows functions | 1 | 55.6 MB | Open |
| Your cleanup potential: | | 4,427 | 1,726.6 MB |

Gain Disk Space and Delete Usage Data

In the section **Gain disk space and delete usage data** area shows you how many items you can delete from your hard drives. After you have selected these, **AVG PC TuneUp** runs a quick analysis in the background and informs you how many items there are on your hard drives in the areas [Clean up Windows and programs](#), [Clean up browser](#), [Remove broken shortcuts](#) and [Disable Windows functions](#) and how much disk space they are taking up. Now you can now decide which items you want to delete and/or which Windows functions you want to disable.

For more information, see [Cleaning the Hard Disk](#).

Analyze Storage Usage and Delete Data

In the **Analyze Storage Usage and Delete Data** area, you can go a step further and search drives systematically for unnecessary data and securely delete any sensitive data.

- **Finding and Removing Duplicate Files**

The **AVG Duplicate Finder** module allows you to locate various duplicate files or folders on your hard disk



and subsequently remove them, thus freeing valuable disk space.

For more information, see [Finding and Removing Duplicate Files](#).

- **Finding and Deleting Large Amounts of Data**

Use the **AVG Disk Space Explorer** module to find large files and folders on your system. You can then archive this data or delete it fully if you are sure you will not need it again in the future. This is a way of freeing up valuable disk space in one go.

For more information, see [Finding and Deleting Large Amounts of Data](#).

- **Securely Deleting Data**

The **AVG Shredder** module allows you to securely remove sensitive data. You can use three intelligent deletion methods to ensure that even a professional could not restore your data.

For more information, see [Securely Deleting Data](#).

- **Cleaning up iPhone, iPad or iPod touch**

The **AVG Cleaner for iOS** module allows you to locate needless and redundant files on your iOS device. Afterwards, you can easily remove all this unnecessary junk in order to save some important storage space and considerably increase device's speed.

For more information, see [Cleaning Up iPhone, iPad or iPod touch](#)

9.1. Cleaning up Windows and programs

In this chapter, you will find out **how** you can free up valuable space on your hard disks under **Clean up Windows and programs** and **why it is useful** to do so.

Under **Clean up Windows and programs**, you can see a structured list of items, including temporary Windows files, old backups, obsolete logs and reports and unnecessary functions that can be safely removed from the hard disk without any negative impact on your system.

AVG PC TuneUp searches for many types of potentially unnecessary files that can be deleted without causing problems. It then shows you how much space can be freed up. First you will receive a list of all files in question and you can then decide yourself which of them you would like to delete.

Particular attention is paid to security. As a result, in contrast to conventional procedures that "blindly" comb through the hard disk using certain patterns, no unpleasant surprises such as sudden error messages or non-functioning software occur.

9.1.1. How to clean up Windows and programs

Select the **Clean Up** category from the Start Center.

Click the **Clean up Windows and programs** feature.

You can now remove unnecessary files and old backups and also remove or disable Windows functions.

How to remove unnecessary files or old backups?



1. Select items from the list

As you can see, a clearly arranged list of the files found or old backups is shown. You see at a glance how much space you could free up. To exclude individual file or backup types from being cleaned up, uncheck the relevant checkboxes.

For each file or backup type you can also view a description in the right-hand window area by selecting it.

You can also click the **Show item(s)** button to view the full list of files or backups recommended for removal.

2. Click **Cleanup**.

Cleanup may take several minutes. While the cleanup is taking place, very occasionally it can appear that **AVG PC TuneUp** is not responding. This is for technical reasons and is no cause for concern. As soon as the cleanup is complete, operations will continue normally, and a message indicating that the cleanup was successful will be displayed. You can close this dialog.

9.1.2. What Types of File are Recommended for Deletion?

AVG PC TuneUp searches for the following types of files and backups which can normally be deleted from your hard disk without causing problems.

| Type | Description |
|-------------------------------|---|
| Temporary Windows files | Windows creates files to temporarily store data that should normally be deleted after its tasks are complete. These files can always be deleted. |
| Reports and logs from Windows | Windows saves various reports and logs, e.g. for error analysis or on the behavior of programs and services. |
| Unnecessary Windows files | You can clean up the image preview for folders and caches category to gain disk space. |
| Backup files of Windows | Repair programs like CHKDSK search your hard disk for lost clusters and save them. Also, whenever you upgrade Windows to a newer version, backups are created of your documents, settings, and program data. Since these backups are rarely used, you can safely delete them (but remember that after deleting Windows upgrade backups, you will no longer be able to restore old documents and settings from previous installations of Windows). |
| Windows history lists | Windows creates history lists, which may log which files you were last working on, for example. These are stored in the registry as references. By deleting or moving the files, these entries become invalid. |
| Temporary program files | Many programs create files to temporarily store data that should normally be deleted by the program after its tasks are complete. These files can always be deleted. |



| | |
|--------------------------------|--|
| Reports and logs from programs | Many programs write log files that can be used to analyze their behavior. This can be helpful, for example, when trying to solve problems. Any log files that you do not plan on evaluating can be deleted. |
| Unnecessary program files | Thumbnails of images are used by various programs to provide a quick preview. You can clean up the thumbnails, caches of programs and screenshots (captured images of your computer screen or open application windows) that you no longer need to gain disk space. |
| Backup files of programs | Many programs automatically create backups of your files. Also, some programs create backups of installation files so that you can reinstall the programs if they ever get damaged. If you feel that you no longer need these backup files, you can safely delete them to free up space (however, remember that after removing the installation files, you may need to use installation disks if you ever want to reinstall the software or make changes to their installation). |
| Program history lists | Many programs create history lists, which may log which files you were last working on, for example. These are stored in the registry as references. By deleting or moving the files, these entries become invalid. |

9.2. Cleaning up browser

As you surf the Internet, your browser saves various kinds of data on your computer.

You no longer need to go through the laborious task of deleting these traces of your surfing activity yourself using your browser; now you can let **AVG Browser Cleaner** search for this data for you. Then, you just need to select the data that you no longer need and **AVG Browser Cleaner** will delete it for you straight away.

In the following chapter, you will find out how you can use the **AVG Browser Cleaner** module to quickly clean up your Internet browser by deleting the cache, cookies and history in next to no time.

9.2.1. How to Clean Your Browser

Start the **AVG Browser Cleaner** module by going to the **Clean Up** category in the Start Center and selecting **Clean up browser** from the **Gain disk space and delete usage data** area.

Alternatively, you can start the module by going to **All functions** in the Start Center and selecting the **Clean up browser** entry under **Usage data**.

Under **Browsers**, select the Internet browser that you want to clean up. You can choose from Internet Explorer, Mozilla Firefox, Google Chrome, Opera and Safari, as well as the plug-ins Adobe Flash Player and Microsoft Silverlight.

AVG Browser Cleaner then determines the items that can be deleted for the selected browsers. Under the name of a browser, there is a list of categories that you can clean up:

| Type | Description |
|-------|---|
| Cache | All pictures, text and animations that you view in your browser while surfing the |



| | |
|----------------------------|---|
| | Internet are saved in the cache. If you visit a website again, the text and images can be loaded from the cache more quickly than from the Internet. However, it is advisable to empty your cache from time to time. |
| Cookies | Cookies contain information about websites that have been visited and are saved by Internet browsers while you are surfing the Internet without asking you first. A cookie may contain login data for a website or information about the user's surfing behavior. |
| Optimize databases | The Mozilla Firefox databases are optimized to gain disk space. |
| Download history | The download history contains a list of files that have been downloaded. |
| Website properties | Some website properties, such as font size, are saved in the browser. |
| Form data | Data entered in web forms, such as address details, is saved in the browser. |
| Saved passwords | Passwords for certain websites can be saved. These passwords should only be deleted by experienced users. |
| Index.dat files | Internet Explorer's URL caches are saved in what are known as index.dat files. Please note that these files should only be cleaned up by experienced users. |
| Internet history | The addresses of all the websites you have visited are saved in the Internet history. |
| Last download location | The path that was manually entered most recently for downloading a file is saved here. |
| Session | Mozilla Firefox saves the last and current session with the tabs and websites opened during that session. |
| Temporary files | Temporary usage data for the browser is saved here. |
| More Mozilla files | In these additional files, Mozilla Firefox saves backups, updates, crash and error reports and log files. |
| More Opera files | These additional Opera files that can be cleaned up include icons, thumbnails, VPS, temporary downloads and the app cache. |
| Most recently entered URLs | The website addresses that have been most recently entered manually are saved here. |

You have the option to protect the cookies from some websites by specifying an exception and excluding them from the cleanup. To do this, check the box for the **Protect cookies from certain websites** option. A new dialog now opens where you can select the websites for which you wish to protect cookies from the list under **Delete**. Once you have made your selection, simply click the right arrow between the two lists. The cookies from the selected websites are then immediately protected.



Using the **Protect items that are less than a week old** option, you can protect saved data with a recent date. To do this, simply check the box for this option. Items that are less than a week old are then excluded from the cleanup.

9.3. Removing Broken Shortcuts

In this chapter, you will find out **why it is important to do so** and **how** you can clean up your system with the **AVG Shortcut Cleaner** module by removing invalid references and shortcuts.

The **AVG Shortcut Cleaner** module helps you quickly and easily to "restore order" to your computer. The module checks all shortcuts on your Desktop, in the start menu and in the Quick Launch bar. If a shortcut references a program that no longer exists or a deleted file, you can easily remove it. Empty folders in the Start menu are also identified, which mostly arise after you have rearranged the Start menu manually.

In addition, **AVG Shortcut Cleaner** analyses the file history lists from Microsoft Office programs, OpenOffice®, Windows Media Player and Nero®. These lists contain references to the files most recently accessed in the programs. These entries will also be checked here. If some point to files that no longer exist or which have been moved, you can delete them.

This means that your system is free from unnecessary ballast; it also means that you no longer have to waste time trying to call up broken links.

9.3.1. How to Remove Broken Shortcuts

How to Remove Broken Shortcuts

Start the **AVG Shortcut Cleaner** module by going to the **Clean Up** category in the Start Center and selecting **Remove broken shortcuts** from the **Gain disk space and delete usage data** area.

Alternatively, you can start the module by going to **All functions** in the Start Center and selecting the **Remove broken shortcuts** entry under **Usage data**.

Your interface (Desktop, Start Menu, Quick Launch bar) and the history lists of some programs are checked for broken shortcuts and entries. This analysis can last several minutes.

After the analysis **AVG Shortcut Cleaner** shows you a list of all broken shortcuts and references. If no broken entries have been found, you will only receive a list of the places that were searched. In this case, click **Close** to exit this function.

You decide whether to delete all broken shortcuts or not. Clear the checkboxes of those invalid references that you do not want to delete. The standard setting is for all invalid references to be deleted.

Click **Cleanup**. The cleanup process normally lasts just a few seconds. Afterwards you receive a short status report on the number of references and shortcuts removed.

Click **Finish** to exit **AVG Shortcut Cleaner**.

9.4. Disabling Windows functions

Click this item to view the **status** of the individual functions. For every function, you receive a description that helps you decide how to proceed. The system shows you how much disk space is taken up by an activated function.



You can disable or remove the following optional Windows functions:

Hibernation File

Hibernation mode is when your computer is shut down without needing to close any open windows, programs or documents first. All data in the memory of the computer is saved to the hard disk. If the computer is turned back on again, you can continue from the point at which you broke off your work. All previously opened windows, programs and documents are immediately restored.

Even if you do not require hibernation mode, the hibernation file takes up valuable disk space. It is exactly the same size as your computer's memory. If, for example, your computer has 4 gigabytes of memory, the hibernation file will also take up 4 gigabytes of space on your hard disk. This is because in hibernation mode the entire content of the memory must be saved.

If you do not use hibernation mode, you can disable it here and thereby free up the disk space it would otherwise use. You can of course reactivate it at any time.

Windows Messenger

Windows Messenger is a program that lets you exchange instant messages with friends. If you do not use **Windows Messenger**, you can easily remove it from your computer here.

Index for Windows Desktop Search

Desktop Search is a Windows function that allows you to find files and folders quickly. It creates a search index with entries for each file and folder. When you search for something (in Windows Explorer or Outlook, for example), you search only this index instead of searching the entire hard disk. This makes the process much quicker. Depending on the number of files on your hard disk, this index can be quite large and may require lots of memory.

If you do not use Windows Desktop Search, then you can not only free up disk space by disabling the feature, but also increase your computer's performance.

9.5. Finding and Removing Duplicate Files

In this chapter, you will find out how you can use the **AVG Duplicate Finder** module to locate various duplicate files or folders on your hard disk and subsequently remove them.

A hard drive resembles a family garage – junk expands to fill available space. An SSD drive behaves very much the same way, while being considerably smaller. You may not notice it at first sight, but a deeper look will surely reveal a few dozen duplicate files (or even whole folders) on your hard drive, eating up precious disk space.

AVG Duplicate Finder lends you a hand in the tedious yet rewarding task of removing duplicate files or folders from your computer. With its help, your digital junk levels will be notably reduced. It can search for files or folders with the same name, the same size, and/or the exact same contents. It also helps you examine each file or folder and decide which one to keep. Finally, it can ignore small files, so you can concentrate on the more wasteful redundancy.



9.5.1. How to Find Duplicate Files

1. Start the **AVG Duplicate Finder** module by going to the **Clean Up** category in the Start Center and selecting **Find and remove duplicate files** from the **Analyze storage usage and delete data** area.
2. Click the **Scan for Duplicates** button to start searching for duplicate files or folders on your hard drive. By default, the whole disk is being scanned; however, you can narrow your selection down by specifying a particular area of your hard drive. The scan usually takes only a few seconds. After it's finished, the **AVG Duplicate Finder** displays a new dialog, allowing you to view all duplicates that were found during the scanning.
3. Now you can decide whether you want to remove or to keep your findings. All duplicates are sorted by category (Folders, Pictures, Music, Videos, Documents, Others). There are also two special categories:
 - *All Duplicates* – the "global" category containing all duplicates found
 - *Selected* – contains the duplicates that you have selected for removal (see below). It is only displayed in case you have previously selected something.

Switch between category views by clicking their names in the column on the right.

You can also use the roll-down menu to sort files in each category (by size, by name etc.) in ascending or descending order. In case of some files (images, for example), a small preview is available, helping you to decide what to do with them.

A folder is considered to be duplicate in case it solely contains duplicate files. If only some files in a folder are identical, these files will be shown in a respective category (Pictures, Music etc.), but the folder as whole won't be shown in the scanning results dialog. Also, a folder won't be marked as duplicate if the duplicate files it contains are [set to be ignored](#).

4. Choose the files or folders that you want to remove. It's very easy – just check the boxes next to their names in the right part of the dialog.

Also, you can make use of the **Auto-Select All** button (located in the lower part of the dialog, to the left from the **Remove selected** button). Clicking it triggers a new roll-down menu, offering you either to **Keep the oldest copies**, or to **Keep the newest copies**. Using one of these options automatically selects (for removal) all copies of every duplicate file found, except the oldest / newest one (you can cancel all your selections by clicking the **Deselect all** option in the same menu). The Auto-Select feature can as well be applied to individual categories (see above) or even to individual files in each category – just move your mouse cursor upon the category or duplicate file's name and click a tiny arrow appearing to the right of it. This triggers a similar roll-down menu for keeping only the oldest / the newest copies (or copy), however applying solely to this single category or file.

Please note, that if you select all copies of the same file or folder, a warning message appears, asking you to confirm that you really want to remove them all. This is a safety measure ensuring that you don't accidentally remove the original version.

5. After you select one or more duplicate files or folders, the **Remove selected** button in the lower-right corner of the dialog becomes active. Click it and confirm that you really want to move selected items into Windows Recycle Bin. The removal process itself usually takes only a few seconds.
6. The list of categories and files / folders will be appropriately updated. Now you can either close the module, or click the arrow button in the upper-left part of the dialog to start searching for duplicates anew.



9.5.2. How to Configure AVG Duplicate Finder

The central settings dialog of the **AVG PC TuneUp** allows you to modify your **AVG Duplicate Finder** behavior.

To access these settings, click **Settings** in the menu bar of the **AVG PC TuneUp Start Center**, then click on a module name on the left of the navigation bar. You can also access the same dialog directly from the **AVG Duplicate Finder** module – simply click the **Settings** link in the upper-right corner of the window.

Use the **Ignore files smaller than:** text field to set the maximum file size to be ignored by the **AVG Duplicate Finder** (in KB). Such files won't be included into **AVG Duplicate Finder** searches, thus allowing the module to concentrate on bigger and more problematical duplicates.

Use the **Ignore hidden files and folders** checkbox to exclude hidden files and folders from **AVG Duplicate Finder** searches.

Use the **Ignore these file extensions:** text field to explicitly specify file types (extensions) that you do not wish to be scanned; simply enter these extensions into the text field and separate individual items by commas (e.g. .xls, .doc).

9.6. Finding and Deleting Large Amounts of Data

In this chapter, you will find out how you can use the **AVG Disk Space Explorer** module to obtain a rapid overview of the space taken up on your hard disks, in order to clean them up quickly and efficiently.

The capacity of modern hard disks and memory cards has increased tremendously over the last several years. At the same time, the needs of the user have also increased to the point where we still manage to completely fill up even the new larger drives.

Obviously, this development hasn't exactly made it easier to keep track of these huge quantities of data. With so many files and nested folders, how is it possible to determine where the most space is being taken up (and possibly wasted)?

AVG Disk Space Explorer helps you find the largest files. You can then archive them onto a CD, DVD or an external hard disk, for example. It might be a good idea to make sure that you do not need these files any more and decide to delete them instead. In this way, you can free up a vast amount of valuable disk space in one go.

9.6.1. How to Run an Analysis

Launch the **AVG Disk Space Explorer** module by going to the **Clean Up** category in the Start Center and selecting **Find and delete large amounts of data** from the **Analyze storage usage and delete data** area.

Alternatively, you can start the module by going to **All functions** in the Start Center and selecting the **Find and delete large amounts of data** entry under **Hard Disk**.

Choose what to analyze:

Analyzing drives

From the list of all of the drives attached to your computer, select those that should be included in the search for huge files. The wizard shows the total size of each drive and the free space available. It is especially important to analyze the drives that have little free space remaining.



Analyzing folders

You can save a lot of time by analyzing individual folders. If you want to analyze an individual folder, you must enable **Analyze folders**. Click **Select** to open a tree structure of all your folders, from which you can select just one folder by highlighting it and clicking **OK**.

Click **Next** to start the analysis.

The analysis may take a while depending on the size and usage of the selected drives or folders. As soon as the analysis is complete, click **Finish** to display the results in the main window.

9.6.2. Analysis Results

Folder Structure

After the analysis, the **AVG Disk Space Explorer** main window opens. This is divided into two areas. In the left-hand area of the window, there is a tree view of your drives and folders, the same as in Windows Explorer. The data for the location selected in the tree view is displayed in the right-hand area of the window. By default, the most recently analyzed drive is displayed first.

If you have decided against the analysis and clicked **Cancel**, the main window still opens, but you will not see any information on the individual drives. You can also start an analysis from here, but only for one drive each.

Displaying Information

To display information in the right-hand area of the window, you can choose between several views by clicking on the respective tab at the top edge.

In each view, you will receive a list, and you can sort the columns into ascending or descending order easily by clicking on the column name. Sorting according to size in particular will give you a quick overview of your biggest files.

The following views are available for displaying the disk space allocation.

- **Overview**

The default view **Overview** is an ideal first step when cleaning up your drives. The most important information from all of the other views is combined to give you a general overview. You can always find information about the selected element in the folder tree at the top of the window, in the upper area with a colorful background. The size and percentage of space used is displayed for each drive. If, however, a folder is selected, this area will show you the size of the folder including all its files and subfolders. You also receive information on the creation date of the folder and when it was last used.

The Computer (or My Computer in case of Windows XP) view represents a certain exception in regard to the first table, since instead of showing an **overview of the largest files and folders**, it will display the occupied space for each drive.

- **Overview of the Largest Folders and Files**

Here you can see a graphical overview of the space on the selected drive or folder in the form of a pie chart. The size and percentage of space occupied is shown here for up to 10 folders and files. If you would like to see more than the 10 elements that are displayed, simply click on the link **Show**



Contents to switch to the **Contents** view.

- **File Types**

This table organizes the files contained in the selected element based on file types and shows you at a glance which types of files (documents, music files, videos or images) are taking up the most disk space.

Please note that this view does not just include the files that are directly located in the selected drive or folder, but also includes all files in subfolders. You can limit the amount of information being displayed by moving a level lower in the folder tree on the left.

If you would like to see the individual files included in a given file type, simply click on the name of the file type in the table. This will directly open the correct category in the **file types** view.

- **Top 10 Files**

This table is particularly useful in acute disk space shortages. It shows a list of the top 10 files that take up the most disk space. As with the last table, this view does not just include the files that are directly located in the selected drive or folder, but also includes all files in subfolders. If you click on one of the files in the table or on the link **Show top 100 files**, the corresponding **Top 100 files** view will open. There you can move, archive or delete files.

- **Contents**

This view shows the contents of the selected element in the folder tree on the left. In addition to basic information such as name and type, as in Windows Explorer, each element has a field that displays its size and the percentage of disk space that it takes up. A graphical representation with bars allows you to recognize at a glance which files and folders are taking up the most space.

Double click on a folder to move a level deeper and to show the contents of the folder.

- **File Types**

Overview and file types

By default, a practical overview of your file types opens, showing you at a glance which ones take up the most disk space.

The top edge of the window displays buttons for **Images**, **Documents**, **Compressed files**, **Music files**, **Video files** and **Other**. Click on one of these buttons or on the respective entry in the overview to display all files of the respective file type.

Advanced: Which file extensions are included?

Each file type category includes files with many different **file extensions**. Images, for example, includes the file extensions .bmp, .jpg, .gif, .tif and .png. The exact list of file extensions included is adapted to suit your system automatically by **AVG Disk Space Explorer**. Click **Advanced** on the top right of your window to display this list. You can customize this easily by unchecking the checkbox.

The **Other** category shows you all other files that do not belong to any of the other file types.

This is where the list of extensions displayed after clicking **Advanced** is particularly helpful, as you can



configure which files should be shown in the list shown below.

In the context menu (displayed after right-clicking on the list of file extensions), you can quickly select everything or reverse the current selection.

Explore your own hard drive and use the available views to look for ways that you can free up more disk space. Sorting the list by file size or date of last access can also help you discover interesting files. To do this, simply use the mouse to click on the headlines with a gray background at the top of the columns.

Cleanup Tip: *Sorting files by the date of last access in combination with limiting a view to certain file types allows you to find objects such as older MP3 files or videos that you may not want to listen to or watch any more.*

- **Top 100 files**

For most users, this is the most interesting view. This shows you the 100 largest files in the selected location of the folder tree, clearly organized by file size. As the contents of all subfolders are included, this view allows you to free up hundreds of megabytes or even several gigabytes with a few clicks, depending on the size of your system.

9.6.3. How to Configure AVG Disk Space Explorer

AVG Disk Space Explorer provides you with some options for personalizing the appearance of your system. To customize the available options, click **File** and then **Settings**.

Hidden files and folders

The **Hidden files and folders** section allows you to determine whether hidden files and folders should be shown in **AVG Disk Space Explorer**. By default, the Windows Explorer settings will be applied. If you want to configure different settings to the Windows Explorer settings, simply click **Use user-defined settings** and tailor the options to your needs. By default, **AVG Disk Space Explorer** protects all elements in system folders to prevent you from accidentally deleting or moving important system files. If you know your system perfectly, you can disable this protection in the **Protected system elements** section. Check the checkbox beside **Permanently disable protection**.

Deletion method

The **Deletion method** section lets you decide which method **AVG Disk Space Explorer** should use as the default when deleting files and folders. The standard deletion method **Move to Recycle Bin** is particularly recommended for beginners, as accidentally deleted files can be restored.

However, please note that the Windows Recycle Bin can only hold a limited amount of data. If the storage limit of the Recycle Bin is exceeded or if Windows needs more space, the oldest files in the Recycle Bin will be permanently deleted over time.

If the deletion method **Permanently delete** is selected, the Windows Recycle Bin will be bypassed and the files will be deleted directly. Restoring these files at a later time is only possible with luck and special software such as **AVG Undelete**.

The three other deletion methods use **AVG Shredder** to make restoring the deleted files practically impossible.



You can find more information about these deletion methods and their settings in [Securely Deleting Data](#) and [Deletion Methods](#).

For **AVG Shredder** deletion methods, the **Repetitions of deletion** box is available. The number in it (1 by default) tells the **AVG Shredder** module how many times it should overwrite the data in order to delete them completely. Generally, the greater the number, the better the chance that the data will be removed permanently, with no chance for their renewal. However, great numbers of repetitions may also significantly prolong the whole data deletion process.

9.6.4. How to Archive Files

Archiving Files with AVG Disk Space Explorer

If, when browsing through your computer, you find some files that you don't actually need any more but still don't want to delete, **AVG Disk Space Explorer** has a great solution to this problem:

Thanks to the smooth cooperation with Windows Explorer you can copy these files to a USB stick or external hard disk before deletion, for example.

1. Click on the selected file(s) and select **Copy** from the **Edit** menu or use the shortcut Ctrl+C.
2. Open the selected target drive in Windows Explorer and paste the copied files using the **Paste** menu item or the shortcut Ctrl+V.

Thanks to support for all major burning programs, you can also easily burn files to a CD or DVD. Simply drag the files you want by holding down the mouse key (drag & drop) directly to the burn list in your burning program.

Deleting Archived Files with AVG Disk Space Explorer

After successfully archiving the files, you can delete them safely in **AVG Disk Space Explorer** and thereby free up valuable disk space. Select a file and then click **Delete** in the toolbar.

9.7. Securely Deleting Data

In this chapter, you will find out **how** you can use the **AVG Shredder** module to permanently delete files, folders and the Recycle Bin and **why it is important to do so**.

Securely Deleting Data Afterwards

If you have deleted a sensitive file in a "normal" way, you cannot subsequently delete it with **AVG Shredder**. However we have a tip for you:

When you defragment hard disks, any deleted files are normally overwritten and cannot be recovered afterwards. Simply use AVG Drive Defrag to subsequently increase the security of a normal deletion method (see [How to Defragment Your Hard Disk](#)).

When you delete a file, it generally ends up in the Recycle Bin. In Windows, this Recycle Bin is simply a folder that collects files for deletion. Retrieving a file from the Recycle Bin is child's play and therefore many users regularly empty the Recycle Bin or delete their files without sending them to the Recycle Bin, in order to feel that the file has been securely deleted.



Note however that when you delete a file, Windows does not actually remove it altogether - its entire content remains on the hard disk. Windows merely marks the file as "deleted" from the file system and releases the space taken up by the file so that it can be used again. Until this disk space is used again, it is relatively easy to restore this file (e.g. with **AVG PC TuneUp** -> Restoring Deleted Files).

However, if you want to be absolutely sure that even professionals could not restore your sensitive data, use **AVG Shredder** to irreversibly delete files, folders and the Recycle Bin. You can choose the most suitable of three different Deletion Methods.

9.7.1. How to Securely Delete Data

Launch the **AVG Shredder** module by going to the **Clean Up** category in the Start Center and selecting **Securely delete data** from the **Analyze storage usage and delete data** area.

Alternatively, you can start the module by going to **All functions** in the Start Center and selecting the **Securely delete data** entry under **Hard disk**.

What would you like to delete?

Files

1. Select **Files**.

This option lets you search for files on your computer to select them for deletion.

2. Click **Add** to add a file to be deleted to the list.

The Explorer opens. Double-click on a file to be deleted to add it to the list. Alternatively, you can drag and drop a file from your opened Explorer or from the Desktop to the list. Select a file with the mouse and drag it into the list.

The **Delete allocated free disk space** option overwrites the space that becomes free through deletion, thereby increasing security of deletion.

If you add a file to the list by mistake, you can remove it again by selecting the entry and clicking **Remove**.

3. Click **Next** to confirm your selection.

You can now select the deletion method you want (see Deletion Methods).

Folders

1. Select **Folders**.

This option lets you search for folders on your computer to select them for deletion. When a folder is deleted, all the files it contains will also be deleted. When you select a folder for deletion, the program detects whether this contains subfolders and you have the opportunity to exclude these from the search.

2. Click **Select**.

A tree structure opens in your folder. Select here a folder to be deleted and click **OK**.



Alternatively, enter into the text field the full path of the folder to be deleted.

The **Delete allocated free disk space** option overwrites the space reserved for the files in the selected folder, thereby increasing deletion security.

If the selected folders have subfolders, here you can remove them from the search. Do this by unchecking the **Include subordinate folders** checkbox.

3. Click **Next** to confirm your selection.

You can now select the deletion method you want (see Deletion Methods).

Recycle Bin

1. Select **Recycle Bin**.

This option shows you the Recycle Bin, so that you can empty it. You receive information on the number of files it contains and the amount of disk space taken up by the Recycle Bin. You can also display the content before deleting it.

2. Click **Show contents**.

You receive information on the size of the Recycle Bin and the number of files it contains. To ensure that there are no important files in the Recycle Bin, you can display the content before deletion takes place.

The **Delete allocated free disk space** option overwrites the reserved free space of files in the Recycle Bin, thereby increasing security of deletion.

3. Click **Next** to confirm your selection.

You can now select the deletion method you want (see Deletion Methods).

9.7.2. Deletion Methods

AVG Shredder provides the following three deletion methods that differ in terms of length of deletion and security of deletion. Each of these deletion methods can be increased by repeating the deletion process. Note however, that the deletion process then takes longer.

Fast deletion

Files will be overwritten with a single character. The original text of the files will be replaced with endless columns of a certain letter.

Secure deletion in accordance with DoD 5220.22-M

A procedure developed by the United States Department of Defense (Regulation DoD 5220.22-M) will be used. Prior to deletion, the files are overwritten with special data patterns multiple times, destroying the original contents so effectively that even expensive examinations of the magnetic structure of the disk in a special laboratory would not allow the data to be recovered.

Secure deletion, Gutmann method



This method, named after its inventor Peter Gutmann, overwrites the files to be deleted 35 times with random values in a special pattern and then deletes them. This method is considered the most secure way to delete files with software, but also takes the longest time.

9.8. Cleaning Up iPhone, iPad or iPod touch

In this chapter, you will find out how you can use the **AVG Cleaner for iOS** module to scan your iPhone, iPad or iPod touch device for unnecessary junk files and afterwards to get rid of such files in next to no time.

The iOS devices, i.e. iPhones, iPads or iPods, are nowadays extremely popular and widespread. People use them for all kinds of purposes – they listen to music, they watch videos, they read the news or simply surf the web. This, however, requires a large number of different apps that create lots of unnecessary and quite useless temporary files. Such junk files are a great burden indeed, since they eat up space and seriously affect the running speed of the device.

AVG Cleaner for iOS comes with a simple yet the most effective and unique solution. All you have to do is to connect your iOS device to your PC via USB cable and to run a scan. This scan will quickly tell you which files can be cleaned up in order to release some extra space back for use. The module is capable of detecting such files as temporary application files, cookies or image thumbnails. You can then get rid of all these space-hogging files in almost no time thereby retrieving some storage capacity that you might have already taken for permanently lost.

Please note that whenever you connect an iPhone, iPad or iPod touch to a computer with AVG PC TuneUp and Apple iTunes installed, the notification bubble automatically appears informing you that there is a way to remove unnecessary junk files from this device. Clicking this bubble opens the welcome screen of the AVG Cleaner for iOS module. Of course, you can simply close the bubble and run the module later on (this time directly from AVG PC TuneUp user interface).

Please note that devices running iOS 8.3 and newer are not supported by the AVG Cleaner for iOS module, because Apple has restricted access to its operating system.

9.8.1. How to Clean up an iOS device

1. Start the **AVG Cleaner for iOS** module by going to the **Clean Up** category in the Start Center and selecting **Clean Up iPhone, iPad or iPod touch** from the **Analyze storage usage and delete data** area.

Alternatively, you can start the module by going to [All functions](#) in the Start Center and selecting the **Clean Up iPhone, iPad or iPod touch** entry under **Mobile Devices**.

2. In order to function properly, **AVG Cleaner for iOS** module requires iTunes to be installed on your PC. iTunes is a media player, media library, and mobile device management application developed by Apple Inc. It can be used to play, download, and organize digital audio and video on personal computers.

On computers with iTunes already installed, this step is simply being skipped. However, if you don't have this software yet, click the **Download iTunes** button (or open the following [webpage](#)).

In your internet browser, click the **Download Now** button. Wait till your installation file is downloaded, then run it – afterwards you will be guided through the installation process. Once the iTunes installation is finished, return to the **AVG Cleaner for iOS** module dialog. As you can see, you are now able to proceed to the next step.

Please note that iTunes is only required because it contains files that AVG Cleaner for iOS module needs to connect to your device. You do not need to open iTunes during scanning or the cleaning process itself.



3. Now, connect your iOS device to your PC via USB cable.

Please note that devices running iOS 8.3 and newer are not supported by the AVG Cleaner for iOS module, because Apple has restricted access to its operating system. Therefore, in case you are using iOS 8.3 or newer, you will see an error message and connection won't be successful.

iPhone, iPad or iPod touch recognition usually takes a few seconds. You may be prompted to unlock your device and tap **Trust** in order to proceed. Once the connection successfully takes place, you will see the **Connect Device** text change to **Connected To:** with your device's name right under it. Now you are able to proceed to the next and final step – running a scan.

4. In order to see just how much space you can safely free up, click the **Scan Now** button. You don't have to be worried that something will be changed or removed without your permission, since it is just scanning, not cleaning. You will see the results first so that you can decide how to handle them.

The scanning process can take up to a few minutes. During the scanning, you can continually view the total size and number of cleanable items. You can always abort the process by clicking the Cancel button (which discards all the findings and takes you back to the previous dialog).

5. The scanning process can end in two ways. Either there are no junk files found (so you can just close the **AVG Cleaner for iOS** module), or there were some findings (which is far more common). In the second case, the Scan Results dialog will be displayed. [Click here to learn more about various types of junk files that can be detected on your iPhone, iPad or iPod touch.](#)

6. After viewing the findings (and possibly selecting items that you wish to remove), all you have to do is to click the **Clean Now** button. The cleaning process will be launched immediately, allowing you to view its progress – the number of already removed junk files and their total size. Please do not unplug your iOS device during cleaning, since it would abort the whole procedure.

If the AVG Cleaner for iOS module is being protected by the AVG Rescue Center (this protection is turned on by default) and there is not enough space on your hard drive to perform backup, the cleaning process will not start. You will either have to free up some disk space, or to turn off automatic backups in the Rescue Center settings. Now you might wish to read more about [automatic backups in the AVG Cleaner for iOS module](#), or just learn about [the Rescue Center protection in general](#).

7. The cleaning process takes a few seconds to complete. Afterwards, you will be informed about the overall number and size of junk files removed. Congratulations! Your iOS device has been successfully cleaned up, its performance has been improved and additional storage space has been gained. Click the **Close** button to leave the **AVG Cleaner for iOS** module.

9.8.2. What junk files can be found?

When the scanning process is finished, you will see the **Scan results** dialog – a ribbon divided into several diversely colored segments (based on junk files categories). The individual segments of the ribbon are displayed proportionally, i. e. their size depends on the percentage of the overall cleanable space that they represent.

The following types of junk files can be cleaned up:

| Category | Description |
|-----------------|---|
| Temporary Files | This category contains all unnecessary temporary files created by apps that |



| | |
|-----------------|---|
| | can be safely removed. |
| Cookies | This category contains all cookies created by apps that can be safely cleaned up. |
| Cache Files | This category contains unnecessary cache files stored by apps that can be safely removed. |
| System Logs | This category contains unnecessary system-usage reports and app-crash logs created by your device that are safe to remove. |
| Thumbnail Cache | This category contains photo thumbnails that 3rd-party apps have created on your device that can be safely cleaned up. Your own photos will NOT be touched. |
| Download Cache | This category contains any interrupted or incomplete downloads. |

After you hover your mouse cursor over a particular segment, you will see this segment's brief description, as well as the total number and size of cleanable items in it.

Clicking the **Show Details** button in the lower-left corner of the window will switch the dialog to **detailed view**. This allows you to examine the individual files in each category that are about to be cleaned up. In this view, you can still see the multicolored ribbon of junk file categories; however, each category is also displayed in the column on the left (together with the total size and number of cleanable items in it), so you can select or unselect it as whole (using the checkbox next to its name). On the right, you can see detailed overview of currently selected category – there is a list of sub-categories (i.e. individual applications) and even particular items (files) within them. Anything can be selected (and unselected). You can even use the Sort roll-down menu to sort items in each category (by their size or name).

Category (or sub-category) current state can be recognized by the appearance of checkbox next to its name. Empty checkbox () means completely unselected category, while a checked one () stands for a completely selected one. Checkbox with a little square in it () marks a category (or sub-category), in which only some items were selected to be cleaned up.

Clicking the **Hide Details** button will switch the display back into basic, simple view. However, all previously selected / unselected items in individual categories or sub-categories remained selected / unselected.

Now, all that remains to be done is to start the cleaning process by clicking the **Clean Now** button. [Click here to learn more about the cleaning process and its results.](#)

9.8.3. Automatic backups

Just as all other **AVG PC TuneUp** modules, the **AVG Cleaner for iOS** is by default being protected by the [Rescue Center](#). This means that before every cleanup, all files that are about to be removed are first backed up on your hard drive. Should the cleaning process lead to a loss of any important data (typically, some stored progress in games), you can afterwards choose to restore them.

The backup is being performed prior to the cleaning process (i.e. just after you click the **Clean Now** button). If there is not enough disk space to create a backup, you will have to free it up. You can also turn off automatic backups in the [Rescue Center settings](#). To do so, click the **Settings** link (in the menu bar at the top right of



AVG PC TuneUp Start Center), choose the **Rescue Center Protection** item from the list on the left and uncheck the **AVG Cleaner for iOS** box. However, we do not recommend to turn off this feature, because it is much safer to keep yourself a way to undo possible unwanted changes.

From the **AVG Cleaner for iOS** interface, you can easily see whether the Rescue Center protection is active or not. Just have a look at the **Rescue Center** button in the upper-right corner of the dialog. If it's green, the module is being secured by automatic backups; if it's gray, the Rescue Center protection has been disabled.

How Should I Restore the Lost Data?

To do so, you will have to launch the **AVG Rescue Center** module. This can be done either from the **AVG PC TuneUp** Start Center (by clicking the **Undo changes** button in the **Rescue Center** area), or directly from the **AVG Cleaner for iOS** interface by using the **Rescue Center** button in its upper-right corner.

Please note that restoring lost data only works on devices with iOS version lower than 8.3. Devices with iOS version 8.3 and newer are not supported by the AVG Cleaner for iOS module, because Apple has restricted access to its operating system.

In the right-hand column of the **Undo changes** section, the **AVG Rescue Center** displays a list of all saved backups arranged by module or date. In case of **AVG Cleaner for iOS** backups, you can see the date and time of their creation, the total number and size of items in each of them and above all, name of the device from which they were created. You should therefore have no trouble finding the one that you want to use.

After you select the backup and confirm its restoration, you will see a dialog informing you that it is necessary to connect the correct device. Use the USB cable, wait for the connection to succeed and click **Continue** button. The restoration process will start. During it, you will be prompted to restart the iOS device in order to successfully restore the data (the **AVG Rescue Center** can do this automatically – just allow it by clicking the **Restart** button).

Please do not disconnect or use your iOS device, since this would disrupt the restoration process.

When the process is finished, you will see one last confirmatory dialog. Congratulations! You have successfully recovered all data and can now safely disconnect your iOS device.

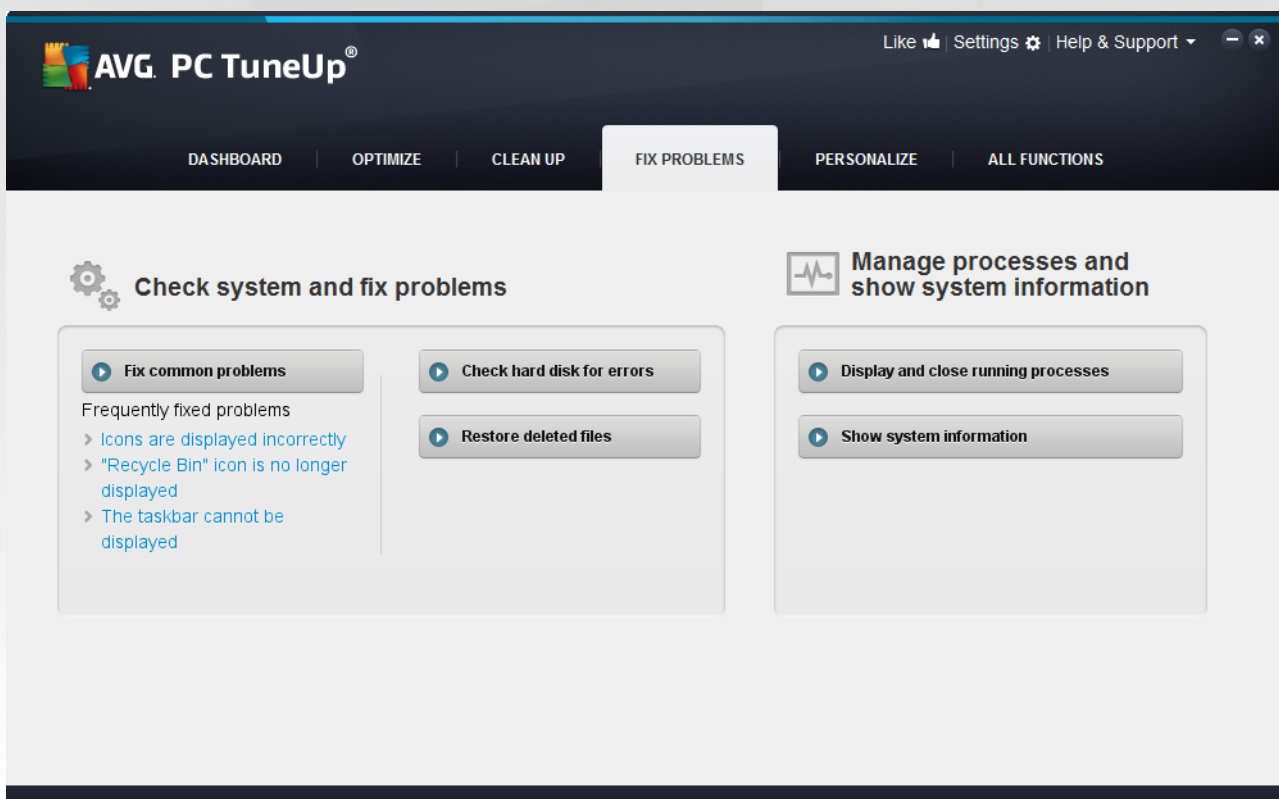


10. Fix Problems

Unfortunately, things sometimes don't go quite as you expected when you are working with a computer. With **Fix problems**, **AVG PC TuneUp** offers you various functions for discovering and rectifying any problems that occur. In addition, the program helps you to recover accidentally deleted files. Under **Frequently corrected problems**, you will find the troubleshooting functions that you use most often, which can be opened by clicking on them.

In the **Manage processes and show system information**, advanced users are given the option to manage running processes or display system information.

All modifications to your system will be monitored by AVG Rescue Center and can be undone if necessary.



Fixing Common Problems

The **AVG Repair Wizard** module fixes common computer and display problems in next to no time. From a list of problems frequently reported by Windows users you can select the ones that have happened to you and fix them in a matter of clicks. For example, here you can display missing icons from the desktop again with just one click.

For more information, see [Fixing Common Problems](#).

Checking the Hard Disk for Errors

The **AVG Disk Doctor** module takes your system drives in hand and checks them for errors in the file system. If problems are found, **AVG Disk Doctor** can fix them immediately.



For more information, see [Checking the Hard Disk for Errors](#).

Restoring Deleted Files

The **AVG Undelete** module allows you to restore files that have already been deleted from the Recycle Bin. You can search for deleted files using various criteria. A particularly exciting feature here is that files can also be restored on external storage media (e.g. a USB flash drive).

For more information, see [Restoring Deleted Files](#).

Displaying and Closing Running Processes

The **AVG Process Manager** module provides details of running processes and open files. You can manage these processes and thus exercise precise control over processor load, memory usage, and open files.

For more information, see [Managing Running Processes](#).

Showing System Information

The **AVG System Information** module provides details of running processes and open files. You can manage these processes and thus exercise precise control over processor load, memory usage, and open files.

For more information, see [Showing System Information](#).

10.1. Fixing Common Problems

In this chapter, you will find out **why it is important to do so** and **how** you can use the **AVG Repair Wizard** module to fix common problems easily. Simply select the problems in question and **AVG Repair Wizard** will fix them for you.

You keep having problems with your computer in your day-to-day work. Without warning, Windows suddenly displays the wrong icons, hides the taskbar or shortcuts on the desktop disappear.

If you discover problems like these on your computer but do not know how to describe them, you will find this function very useful. You select the problems that are occurring from a list of typical computer problems, and **AVG Repair Wizard** fixes them immediately.

10.1.1. How to Fix Common Problems

Launch the **AVG Repair Wizard** module by going to the **Fix problems** category in the Start Center and selecting the **Fix common problems** entry from the **Check system and fix problems** area.

Alternatively, you can start the module by going to **All functions** in the Start Center and selecting the **Fix common problems** entry under **Windows**.

Select the problems you have for repair. **AVG Repair Wizard** shows you a clearly arranged list of common Windows problems. After you select an entry in the list, a detailed explanation of this problem appears in the right-hand window area. Select the checkbox for every problem that you are experiencing.

Click **Next** to start the repair. This opens a list of the selected problems opens that you must confirm by clicking again on **Next**. The repairs are now carried out.



Click **Finish** to close the module.

10.2. Checking the Hard Disk for Errors

In this chapter, you will find out **how** you can analyze your drives using the **AVG Disk Doctor** module and **why it is important to do so**.

When working with your computer, files are constantly being read and written – regardless of whether you are editing a text document, looking at pictures or simply starting an application. Windows places all files in special file systems to allow quick access to all necessary information at any time.

More information on system files

File systems keep track of every file and folder on a drive and save information about these objects such as their name, size, date of last access, location and much more.

The file systems used by Windows for hard drives, USB flash drives, memory cards (such as those used by digital cameras) and diskettes are called FAT and NTFS. The newer of the two file systems, NTFS, allows you to save additional information such as access authorizations and is better suited for the size of modern disks than FAT.

Over time, errors may occur in these complicated systems - due to defects in the drives being used, power outages or program crashes. If these errors are not found and corrected quickly, this can lead to error messages, problems with programs and, in the worst case, total loss of important data.

AVG Disk Doctor performs a thorough analysis of your drives and their file systems. If any errors are found during analysis, they can be repaired automatically. This is how you guard against data loss.

10.2.1. How to Check your Hard Disk

Launch the **AVG Disk Doctor** module by going to the **Fix problems** category in the Start Center and selecting the **Check hard disk for errors** entry from the **Check system and fix problems** area.

Alternatively, you can start the module by going to **All functions** in the Start Center and selecting the **Check for errors** entry under **Hard disk**.

Select the drive to be checked by **AVG Disk Doctor** and click **Next**.

Select **Normal analysis** or **Thorough analysis**.

Because the **Thorough analysis** can take a long time for large drives, the **Normal analysis** of the selected drive is sufficient in most cases – this usually takes 1-2 minutes.

However, if errors occur on your system or Windows reports problems with reading or writing data, a **Thorough analysis** is recommended.

Click **Next** to start the analysis.

During the analysis, **AVG Disk Doctor** provides you with a graphical display of the progress. The boxes displayed represent the space usage of the drive being examined.

If no errors have been found, click **Finish** to exit the module.



In some cases it is necessary to restart your computer in order to successfully complete the analysis or repair process. This can happen, for example, when active programs or Windows itself are using the selected drive and thus prevent **AVG Disk Doctor** from having exclusive access.

If a system restart is necessary, **AVG Disk Doctor** will show you a corresponding message. You can then decide if the necessary restart should be performed immediately or if you would like to restart the system yourself at a later time.

10.2.2. Normal vs. Thorough Analysis

Normal Analysis

Normal analysis takes approx. 1-2 minutes and is generally sufficient.

Normal analysis is carried out in several phases. The table below shows explanations of all possible steps (only the first three lines are performed during the normal analysis).

Thorough Analysis

Thorough analysis covers all of the steps of the **Normal analysis**. In addition, your drives will be checked for physical defects.

Storage space on drives is divided into so-called sectors, which are usually 512 bytes in size each. In order to detect physical defects on a drive, the **thorough analysis** checks the performance of each of these sectors.

The length of this analysis depends on several factors, including the size of the drive and the degree of fragmentation. You should allow at least 5 to 20 minutes.

The following table explains all possible steps.

| Analysis step | Explanation |
|---|--|
| Normal and thorough analysis | |
| Checking files and folders (NTFS and FAT) | Every element in the file system is checked. The program ensures that the structures of all files and folders are correct. |
| Checking indexes (NTFS only) | Indexes are references to folders in the NTFS file system. If any of these indexes are damaged, the associated folders will not be displayed in the file system. If any of your files or folders have suddenly "disappeared", there is a good chance that they will be recovered after repairing the file system. |
| Checking security descriptors (NTFS only) | Files and folders in the NTFS file system are usually protected by security descriptors that prevent access by unauthorized users. During the analysis, errors in these descriptions are found and corrected. |
| Only thorough analysis | |



| | |
|---|---|
| Checking file data (NTFS only) | All sectors of the disk that currently contain files are checked. This will ensure that no read errors take place when working with files. If sectors are found that require multiple read attempts to successfully read the data, the file data contained will be moved to a sector that is free of errors. The sector is then marked as defective. This prevents future problems. |
| Checking free disk space (NTFS and FAT) | All drive sectors that do not contain any files will be checked for error-free readability. If errors occur during this analysis, the sector in question will be marked as defective to prevent files from being saved there in the future. |

10.3. Restoring Deleted Files

In this chapter, you will find out **how** you can use the **AVG Undelete** module to restore accidentally deleted files.

Have you accidentally deleted an important file and want to restore it? Perhaps you already looked in the Recycle Bin but it wasn't there?

Then you will be pleased with the functions offered by **AVG Undelete**. Here you can restore deleted files, provided Windows has not yet overwritten the drive space that these files took up.

Valuable tips for rescuing data

The following rule of thumb applies: The longer ago a file was deleted and the more you have worked on your computer since then, the smaller the chance of complete restoration. Therefore, as soon as you realize that the file should not have been deleted, try to rescue it with **AVG Undelete**.

Never install software for recovering deleted files on your system if the mishap has already occurred. You could overwrite important data irrevocably precisely by installing such software.

Even if you install the application on a different drive, deleted data is still at risk from temporary installation files. Data recovery software like **AVG Undelete** should therefore always be installed and ready for use in advance. This means you are always fully equipped to deal with an emergency situation, should one occur.

10.3.1. How to Search for Deleted Files

Launch the **AVG Undelete** module by going to the **Fix problems** category in the Start Center and selecting the **Restore deleted files** entry from the **Check system and fix problems** area.

Alternatively, you can start the module by going to **All functions** in the Start Center and selecting the **Restore deleted files** entry under **Hard disk**.

Select the drives you want to scan for deleted files.

Even if you want to recover a file on an external storage medium (for example a USB flash drive), this option will still be displayed.

If you can no longer remember where the files were stored, you can also browse all drives.

Restrict your search. You can refine your search through the entry of search terms. This is recommended if you can remember the name of the file or even just part of the name.



Search tip: Use the wildcards * and ?

When you enter search terms you can use **wildcards**. These function in exactly the same way as in many standard search engines.

The use of wildcards when searching is useful if you cannot remember the precise name of the file or only wish to search for a certain **file extension**.

* and ? can be used as wildcards, whereby * represents multiple characters and ? stands for an individual character.

Examples for the use of wildcards:

- A search using **photo*** will find all files whose name starts with **photo**, and of all file types i.e. photo_01.jpg, photo.bmp, photo_paris.tif, etc.
- A search for **photo.*** or for **photo** (no wildcard) will find all files called **photo** and of all file types, i.e. photo.jpg, photo.doc, photo.tif, etc.
- A search for ***.doc** will find all files with the extension .doc.
- A search for **photo_??** finds all files whose name starts with photo_ and which have two further characters in their name, and of any file type, i.e. photo_01, photo_09, etc.

Why should I search for 0 byte files?

0 byte files consist solely of the file name. It is impossible to restore the content of such files. If, for example, you have deleted a file with a strictly confidential file name and want to be sure that this file can never be found again, you can include 0 byte files in the search.

Why should I only search for files in good condition?

With files that are in good condition you stand a good chance of recovering the file in full.

Click **Next** to start the search.

AVG Undelete searches every selected drive in turn. For large hard disks and if you have not entered any search terms, the search can take quite a long time.

Search result displays the file name, the original storage location (folder), the size, file type, date last changed and an estimate of the **condition of the file**.

10.3.2. File Restoration

Condition of a deleted file

For every deleted file, **AVG Undelete** determines its probable condition. This is of course the most important information at this point: you receive a very accurate prediction of whether a file can be restored again in full.

Good condition



If the condition of a file is likely to be good, the place the file originally took up on the hard disk will not yet have been replaced with another file. It is therefore highly probable that the file can be successfully restored.

Poor condition

If the condition of a file is likely to be poor, this means that the place that it once took up on the hard disk, will have been partly overwritten by other files. However, there is still a chance that at least some of the file can be restored. The precise result of the restoration cannot at this time be determined for certain, however.

Restoring files

1. Select the files that you wish to restore.

Use Ctrl-click to select multiple files.

2. Click **Restore** to start the recovery attempt.

3. Specify whether the files should be restored to the original folder or to another location.

If you wish to select a different location, the folder hierarchy appears and you can select a folder or create a new folder. Click **OK** to confirm your entry.

AVG Undelete now restores the selected files to the location specified.

You can also exit the dialog at any time by pressing **Cancel**.

Was the recovery successful?

As soon as restoration has finished, you can try to open the file. If this works, the file was successfully restored. If this doesn't work, the file had probably already been overwritten by another file.

If you now wish to use another program to recover deleted files, so as to be sure that you have tried everything, we strongly urge you not to install this on the same hard disk as the file was stored on.

10.4. Managing Running Processes

In this chapter, you will find out **how** you can use the **AVG Process Manager** module to monitor and manage running processes, system capacity and open files and **why it is important to do so**.

AVG Process Manager gives you constant control over the programs and processes that are running on your system and allows you to monitor your system activity.

You can find out how much memory is being used by which processes, view numerous details and terminate unwanted processes with a single mouse click.

The module also offers real-time graphs for processor and memory usage and provides up-to-date information on what your computer is doing at any given time.



10.4.1. How to Manage Running Processes

Launch the **AVG Process Manager** module by going to the **Fix problems** category in the Start Center and selecting **Display and close running processes** from the **Manage processes and show system information** area.

Alternatively, you can start the module by going to **All functions** in the Start Center and selecting the **Display and close running processes** entry under **Windows**.

AVG Process Manager provides a great deal of information on the current status of your system. This information is divided into three tabs:

Processes

After the module is launched, the **Processes** tab shows all of the programs and processes that are currently running. The table shows you the names of the processes together with their priority and CPU usage. The module also shows you how much memory space the individual processes are taking up.

If you select a process from the list you can view more information on each application with **Show details**. Select **Terminate process** to force an application to close. This is a somewhat drastic measure, but is sometimes necessary to close a program that has crashed, or if you want to stop an unwanted dialer.

When User Account Control is enabled, it is possible that only the processes started by you are displayed. To see the processes started by other users and by the system, click **Show all processes** at the bottom of the window.

If you have selected a process in the list, you can click **Edit** and then **Set Process Priority** to specify how much processing power Windows should assign to this process.

Open Files

In the **Open Files** tab, you have an overview of the files and folders open at this time. The table will show you what the file type is, where the file or folder is and which process has opened it at that time.

You should not be surprised if some files are shown in the list more than once. Files and folders can be opened by more than one process at the same time. It is also normal if files that are obviously "open" cannot be found in the list. Applications like Microsoft Word and the text editor Notepad only open a file briefly to read its contents or to save it, but do not keep it open the entire time you are working on it.

Tip: If you try to delete a file and you get an error message telling you that it is currently in use, you can use this tool to find out what process is using the file and end it. This will then let you delete the file.

Performance

The **Performance** tab shows you numerous facts about the system.

You can view the current processor usage in percent, and a graph of the processor usage for the last several seconds. A similar graph also shows memory usage for the last several seconds. You can also view the current usage of the page file and the physical memory in kilobytes.

There is also a menu bar and a toolbar. Some of the functions here adjust the content of the active tab. These are described in the sections above. The general functions of the **File**, **Tools** and **Help** menus are always



displayed.

General menu bar functions

Menu "File"

In the **File** menu, you can use the **New application** entry to call up the well-known Windows Run dialog to start a new application or open a file. Click **Exit Windows** to shut down or restart the computer so that new settings can take effect.

A function of particular interest is **Replace Task Manager**, which works by replacing Windows Task Manager on your system with **AVG Process Manager**. This means you can call it up using the Ctrl+Alt+Del shortcut, or right-click in a free area of the taskbar to select it. If you want to use the Windows Task Manager again, simply select the same menu item to remove the check mark in front of it.

Tools Menu

In the **Tools** menu you can configure how **AVG Process Manager** is to be displayed on your computer. You can keep it always in the foreground, e.g. to monitor the processor usage for your system's uptime. You can also display **AVG Process Manager** in the notification area on the bottom right of your desktop when you minimize the window. There is an icon there, which you can click any time in order to maximize the window again in no time at all.

Help Menu

In the **Help** menu you can call up the program help at any time, visit the AVG website, check **AVG PC TuneUp** for updates or display information on your version of **AVG PC TuneUp**.

10.5. Showing System Information

In this chapter, you will find out **how** you can use the **AVG System Information** module to display system information:

AVG System Information looks into your computer and collects all sorts of facts and information about your hardware and software and your computer's performance.

This information is important if you wish to upgrade your computer or if an engineer asks you whether certain components are installed on your computer.

10.5.1. How to Show System Information

Launch the **AVG System Information** module by going to the **Fix problems** category in the Start Center and selecting **Show system information** from the **Manage processes and show system information** area.

Alternatively, you can start the module by going to **All functions** in the Start Center and selecting the **Show system information** entry under **Computer**.

The facts about your system are displayed on the following nine tabs:

Overview

The overview displays summarized information on the most important components of your computer.



This quickly shows you what processor is installed, the system RAM, the graphic card performance, the mouse in use, and any available information regarding the disk drives.

Windows

Here you can find out what version of Windows and of Internet Explorer you are using and when you last booted your computer.

Display

All important information, including the supported display modes and the abilities of your monitor and graphics card, can be found here.

Memory

Here you see current memory usage and also how much memory is being used by each of the applications that are currently loaded.

Performance

Shown here are all facts on processor usage, physical memory and the size of the page file. This information is displayed in three real-time graphs.

Drives

For each drive, here you are shown information on use of storage space and hardware. You can also find information about how your drives are organized under **File system**.

I/O Devices

This lists all the important ports, the installed printers and the audio devices.

Communication

When a dial-up connection is open, two real-time graphs show how much data is being sent and received in kilobytes per second.

System Devices

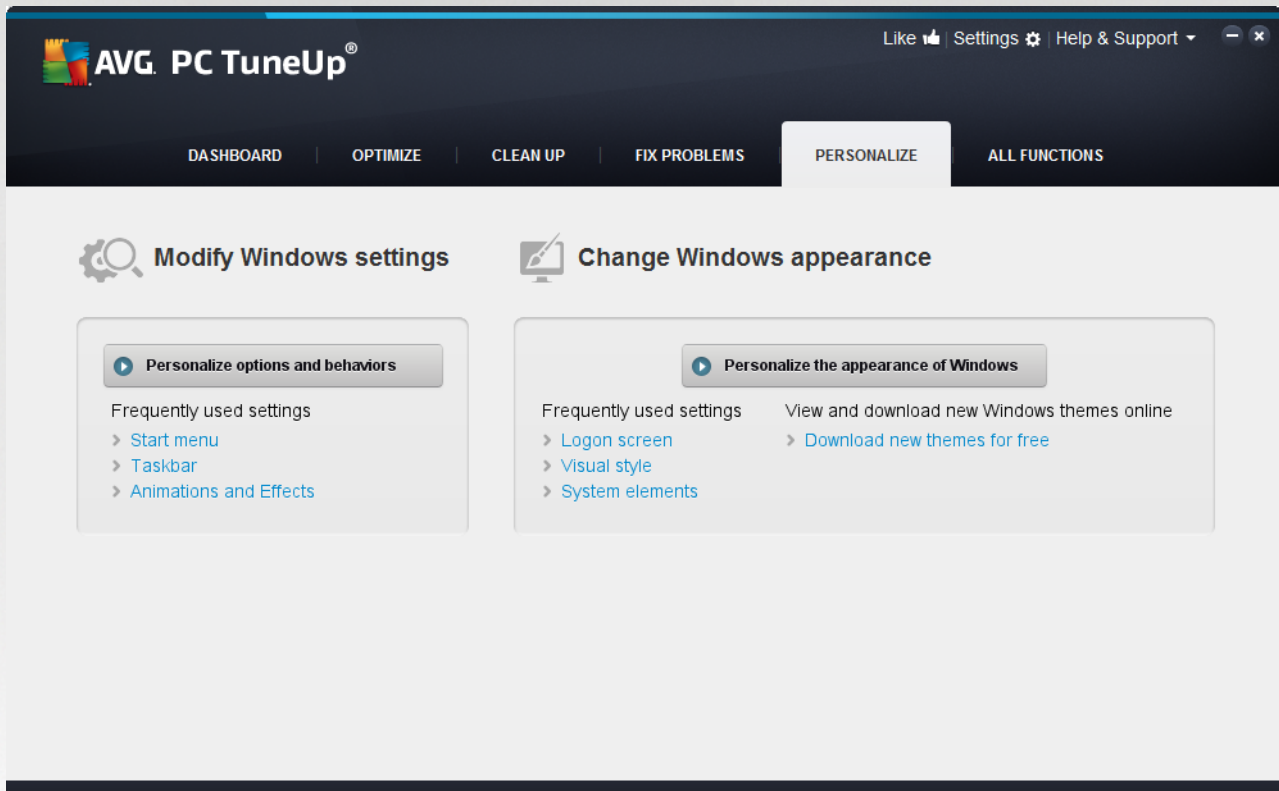
Information on the processor and BIOS memory is displayed here. Click the link **Processor details** to view detailed information on the features of your processor.



11. Personalize

Using the **Personalize** category, you can specifically configure how your Windows should look and function, thereby personalizing your computer. Under **Frequently used settings**, you will find the elements and areas of Windows that you often personalize and you can open these with a simple click.

All modifications to your system will be monitored by AVG Rescue Center and can be undone if necessary.



Modify Windows settings

Under **Personalize options and behaviors**, you will find the **AVG System Control** module, which you can use to adapt the visual effects, user logon, desktop and much more to your personal needs and preferences.

For more information, see [Personalizing Options and Behaviors](#).

Change Windows appearance

Under **Personalize the appearance of Windows**, you will find the **AVG Styler** module, which you can use to design the Windows user interface entirely to your personal taste. For example, settings such as icons, the logon screen, the appearance of windows and buttons and much more can be very easily modified.

If you would like a completely new design, you can download entire design packages from the Internet. Simply click on the link to **download new Windows themes for free**.

For more information, see [Personalizing the Appearance of Windows](#).



11.1. Personalizing Options and Behaviors

Start the **AVG System Control** module by going to the **Personalize** category in the Start Center and clicking on the **Personalize options and behaviors** entry in the **Modify Windows settings** area.

Alternatively, you can start the module by going to **All functions** in the Start Center and selecting the **Modify Windows settings** entry under **Windows**.

On the left-hand side of the **AVG System Control** window, you can see the various categories that are available for the settings options.

Each category contains subcategories. If you click on these, tabs open on the right-hand side containing the individual settings options.

Here you will find detailed information on all settings options, sorted by the categories in the left-hand window area:

Display

Here you specify exactly which of the Windows visual effects you wish to use, configure how file types are handled and specify how folder windows and the Explorer should look and act.

Here you will find detailed descriptions of your settings options, sorted by subcategory in the left side of the window: [Display](#)

Usage

Here you can enter a range of mouse and keyboard options, adapt the items of the Start menu and the speed at which submenus open, and determine the appearance and behavior of the taskbar.

Here you will find detailed descriptions of your settings options, sorted by subcategory in the left side of the window: [Usage](#)

Communication

In this category, you can configure the behavior of Windows in the network, personalize Internet Explorer and Outlook Express and/or Office Outlook, speed up web surfing and protect your privacy by preventing certain programs from automatically sending data about your surfing habits.

Here you will find detailed descriptions of your settings options, sorted by subcategory in the left side of the window: [Communication](#)

Administration

This category of **AVG System Control** gives you control over many internal system settings. For example, you can adapt the startup process and user logon, configure automatic CD playing, system paths and user data, and adapt the default settings of the command prompt.

Here you will find detailed descriptions of your settings options, sorted by subcategory in the left side of the window: [Administration](#)



Wizards

Here you will find the **Copy Settings** wizard. It copies your settings to other user accounts and to the Windows logon screen: [Wizards](#)

11.1.1. Display

Animations and Effects

Effects

Here you can change settings that relate to the display and operation of the Windows user interface.

Under **Settings**, there are numerous options that you can enable or disable using the checkboxes.

To learn more about an option, simply select it with your mouse. Several lines of explanatory text open under **Description**.

Depending on the performance capabilities of your system, switching off unwanted effects can improve speed. Click **Best appearance** to select all the options that will give Windows an outstanding visual appearance. If the performance is more important to you, select **Best performance**. Selecting **Default settings** restores the Windows default settings.

Animations

Under **Window and message animation**, specify whether windows or tooltips should be animated. Here you can switch on the animation when windows are minimized and maximized.

If the **Use the animation with tooltips** is on, you can select the effect you want from the selection list.

Under **Animation of elements**, you can specify for which display and control elements scrolling and opening should be animated. You can switch on the three options **list & tree view**, **list boxes** and **dropdown lists**.

Click **Best performance** to turn off all the options that only serve to provide showy effects. Selecting **Default settings** restores the Windows default settings.

Menu Appearance

Under **Animation** you specify whether menu items are to be hidden after the menu is accessed. You can also select a display effect from the list.

Under **Effects**, you can specify whether Windows should use flat 2D menus or whether a small 3D shadow should be displayed beneath an open window.

Font Smoothing

To improve the legibility of text on your computer, here you can select your preferred font smoothing method. The font smoothing type **ClearType** merits special attention: it is particularly suitable for flat-screen monitors (TFT and LCD) and makes use of their so-called subpixels to effectively smooth the edges of even small fonts. Select **ClearType** and click on **ClearType Settings** to obtain the optimum



adjustment of ClearType smoothing to your screen.

File Types

Menu Operations

Under **Drives and folders**, you can configure their context menus.

The **Show "Open Command Prompt Here"** entry opens the command prompt at the desired location. You can execute DOS commands via the command prompt.

Under **Files and folders** you can specify what commands are to be shown in the context menus of files and folders. Here, the four commands **Send To**, **Move To Folder**, **Copy To Folder** and **Encrypt/Decrypt** can be displayed. The checkbox is active for commands that are already enabled.

Selecting **Default settings** restores the Windows default settings.

Menu "New"

Here you can select which file types should be shown in the **New** submenu of the context menu for the desktop, Explorer and the "Save" dialog. Use the checkboxes to set which file types should be displayed.

Select **Remove** to remove a selected entry from the list completely. Select **Add...** to include other file types in the list.

Under **Options**, you can specify whether the "New" menu should appear in the context menu of the desktop and the free area of folder windows.

Opening Files

Here you can select how Windows should proceed when opening files with unknown extensions. Under **Default application**, you can specify that either the "Open with" dialog is displayed or that a file is automatically accessed with a certain program (for example with Notepad). To do so, write the executable file name of the desired program (i.e. notepad.exe) in the field. Alternatively, select a program via **Edit**.

Advanced

Here you can specify whether a new shortcut should be automatically marked as such. In Windows XP, the shortcut is by default prefixed with a "Shortcut to"; in Windows Vista and 7, the default text "- shortcut" is added to the end of the shortcut name.

In Windows XP there is also the **Windows Picture and Fax Viewer** section, where you can decide whether double-clicking on images and fax files automatically loads them into the Windows Picture and Fax Viewer.

Folder Options

View

Here you can determine how folder windows and the elements they contain are to be displayed.



Under **Window**, you specify

- (in Windows XP) whether the tree view of directories in a folder window is always to be visible, whether the folder window last opened on logon is to be restored, whether compressed ZIP files are to be displayed as folders, and whether a details bar is to be displayed.
- (in Windows 7) whether the menu bar in a folder window should always be visible, whether compressed ZIP files should be displayed as folders and whether a details bar should be shown.
- (Windows Vista - whether the same options as in Windows 7, but in addition) whether the most recently opened folder window should be restored at logon.

Under **View settings** (only available in Windows XP), you can use the slide control to determine how many folder views should be stored.

List

Here you adjust the display of additional information in a folder window to suit your specific requirements.

The **Pop-ups with detailed information** section determines whether a tooltip displaying additional information should be shown when the mouse cursor is moved over a file or folder in a folder window.

Under **Icon arrangement**, you specify whether the files should only be sorted alphabetically or whether they should be arranged logically according to numerical values and the alphabet.

Under **Encrypted and compressed files** you can specify that both file types be marked with a certain color. By default, compressed files are blue and encrypted files are green.

In Windows XP and Windows Vista you can also define the color assignment to suit your needs via the **Edit** button.

Thumbnails (Windows XP only)

Windows can show thumbnail images in a given folder as appropriate for a collection of photos. Here you determine the size and quality of these preview images. The standard size is 96 pixels. You can enter a different value if you wish. You specify the quality using the slide control.

The higher the picture quality, the more disk space the thumbnails take up. Under **Cache**, you specify whether these thumbnails should be temporarily saved to a file called THUMBS.DB. This file is also stored in the folder and allows the thumbnails to be loaded particularly quickly in the future.

Selection

Here you can set the color of the selection rectangle that should be used in folder windows. This rectangle shows the progression of the clicked mouse button, if you select multiple files simultaneously.

In Windows Vista and Windows 7 you can also decide whether a checkbox should be displayed for selecting elements, allowing multiple files and folders to be selected with the mouse without the need to use the Ctrl or Shift keys.



Advanced

Here you can set what elements are to be displayed on the **Desktop** and under **Computer** (or **My Computer** in Windows XP). You can easily hide entire drives and specify how the **address bar** in Explorer, Internet Explorer and the Run dialog should behave.

11.1.2. Usage

Input Options

Mouse Functions

Under **Swap mouse buttons** you can swap the left and right mouse button. You would then click with the right-hand button and open the context menu with the left-hand button.

Many mice now come with a scroll wheel. In accordance with Microsoft Intellimouse and similar models, you can specify under **Scroll wheel** what should happen when this wheel is used. The standard setting is scroll by 3 lines. You can change the number of lines, increase the scrolling setting to a full screen page or turn it off completely.

Under **Set pointer automatically** you can specify that the cursor automatically moves to the highlighted button when a dialog box opens so that you can click this button right away.

Mouse Sensitivity

Under **Double clicking and dragging** you can specify how much you can move the mouse when double clicking and how far you have to move the mouse to start dragging an object. The values are given in pixels.

Tip: Try out your new settings on the Test icon.

Under **Hover effect** you can change the movement tolerance and the hover time of the mouse cursor for the display of the hover effect. This takes effect as soon as the cursor hovers over an item for a certain length of time.

Tip: You can also try out the setting on a Test icon. It lights up as soon as the mouse pointer is placed over it.

Active Window Tracking

Here, you can enable a little-known Windows function that could change the way you work with windows completely: **Active Window Tracking**.

If you enable this feature, all you need to do is move the mouse pointer over an inactive window to activate it so that you can work with that program. You then no longer need to click on a window in order to enable it.

You can turn on the option in the **Foreground** section in order to pull the active window immediately to the top.

Keyboard

Under **Flashing cursor**, you can set how the cursor flashes at the point at which data is to be input



(e.g. in a word processing program).

Tip: Look in the small preview to the right of your current settings to see the changes made.

Use the slide control to specify the frequency of flashing. If desired, you can also set the **cursor width** to your liking and enter a value in pixels.

Modern keyboards are made with a special Windows key with the Windows logo printed on it. This key is used to open the Windows Start menu and it can also be used in combination with other keys to initiate special functions, e.g. maximizing all windows (Windows + M) or showing the Desktop or, since Windows Vista, the Computer (Windows + E).

If you do not need these key combinations or sometimes hit them by accident due to the layout of your keyboard, you should turn this option off.

Start Menu (not available in Windows 8)

General

Under **Menu speed**, you specify whether the submenus should open automatically as soon as the mouse points to the menu entry in question or whether a click is also necessary. There are great differences here between the various operating systems, about which we would like to go into further detail.

Windows XP:

If you opt for Display when pointed to, you can set for how long the mouse pointer is to be positioned over the item before the menu opens.

Under **Users** you can specify whether your user name should be displayed in the upper area of the Start menu. In addition to the **Shut down** button, you can also display or remove a **Log off** button by which to switch users.

Windows 7:

Under **Exit a session**, you can specify which action should be taken when you click the Exit a session button. By default, the computer is **shut down**.

For the **Hibernate** and **Power save** modes, the current status, including all opened documents and programs, is preserved so that after switching your computer back on you can continue working right where you left off. Whereas power save mode still requires a small amount of power, in hibernate mode the computer can be completely disconnected from the power supply. However, putting the computer into hibernate mode and then "waking" it will take much longer.

Alternatively, you can specify here that this button causes the computer to restart, the computer to be locked, the current user to be logged off, or that the user should be changed. Simply decide based on your preferences.

Note that when an update is ready for installation, this button is temporarily assigned to the **Shut down computer** function (until the update has been installed). This ensures that key program updates are not accidentally forgotten.



Windows Vista:

Under **Power off button** you can set what action is to be carried out when you click on the Power off button. By default, the computer is put into **Power save mode**.

If you would prefer to shut down your computer quickly (or you are missing this function entirely in Windows Vista), you are advised to select **Shut down computer**. This saves you from having to open the submenu and selecting **Shut down** there. The third option is to put your PC into hibernate mode.

For the **Hibernate** and **Power save** modes, the current status, including all opened documents and programs, is preserved so that after switching your computer back on you can continue working right where you left off. Whereas power save mode still requires a small amount of power, in hibernate mode the computer can be completely disconnected from the power supply. However, putting the computer into hibernate mode and then "waking" it will take much longer.

Recently Used

Use the **Default settings** button to restore the Windows default settings.

Windows XP:

Under **Recently used files** you can set whether recently used files are to appear under **Documents** in the Start Menu. You can also define the exact number of documents to be displayed. When logging off, you can also automatically clear the list.

Windows Vista and Windows 7:

Under **Recently used files** you can set whether recently used files appear in the Start menu under **Recently used**. You can also delete the content of the list.

Under **Recently used programs** you can specify whether recently used programs should appear in the Start menu. On Windows Vista you can also use **Settings** to specify which programs you want to be displayed in the Start menu. The default setting is for Windows to show all recently used programs here.

Shortcuts

Under **Move and edit shortcuts** you can set whether the moving of shortcuts is allowed.

From here you can also start **AVG Shortcut Cleaner**.

Advanced (Windows XP only)

Here you can open the **AVG Styler** module in a new window and thereby personalize the appearance of Windows to suit you, e.g. change the icons for folders and menu items.

Task Bar

Flashing Buttons

While entering text and other content, the activation of other windows is prohibited. A flashing icon in the taskbar alerts you to the fact that other software is trying to communicate with you. If this flashing should be retained, the option **Enable flashing taskbar buttons** must be turned on.



Under **Flashing speed** you specify how rapidly the button on the taskbar should flash. You have two options to choose from: The first one lets a window button in the taskbar flash until it is clicked again. The second option restricts flashing to a certain number specified by you. The default setting is 7.

Under **General**, you can specify how long Windows should wait after your last key press before windows from other programs are allowed to appear again.

Button View

Here, you can specify whether and how windows should be represented by buttons on the taskbar.

Under **Display** you specify the desired maximum width of buttons in pixels. The default value is 154 pixels. If you deactivate the option **Show animated buttons**, Windows will no longer animate the corresponding taskbar button when a window is opened. This leaves more computing power available for other tasks.

Under **Grouping** you can specify whether and in which cases several windows of a program are to be represented by a shared button on the taskbar.

Minimized Windows

Sometimes, after the windows of a program have been minimized, only the title bar remains which is then automatically positioned at the bottom of the screen.

Under **Position and alignment** you determine the exact target position of these bars. The default setting is **bottom left**, where several bars are displayed **side by side**.

Under **Spacing**, you can specify how many pixels there should be between the individual title bars.

Advanced

Notifications are often shown in the taskbar (next to the clock) to inform you of important events or ask you to perform various tasks, such as removing unused shortcuts from the desktop. Here you can specify different options for these reminders.

11.1.3. Communication

Network

My Network Places

Here, you can configure a number of settings that affect the display of shares under My Network Places. Among other things you can prevent your computer from being displayed in My Network Places of other computers and that (using your password) all drives on your computer can be accessed, although you did not specify any shares.

Advanced

In the **Universal Plug & Play** section you can turn off the Windows service for automatically detecting network devices. This function is a potential security risk and should be disabled if you do not need it.

Under **Quality of Service (QoS) service**, you can prevent Windows from reserving part of your Internet connection bandwidth for important packets. Disable **Reserve bandwidth** if you always want to have



your full bandwidth for surfing.

Passwords (Windows XP only)

Saving your passwords means that you don't have to enter your password every time you dial into the Internet, access protected shares, etc. However, hackers may be able to access and misuse these passwords. You can therefore disable the automatic saving of passwords here.

Internet Time

Here you can set the clock on your computer to be synchronized regularly with an atomic clock over the Internet, to ensure your computer always shows the correct time. The following option must be enabled first: **Automatically synchronize with an Internet time server**.

The **Available time servers** section lists some popular reference clocks. If you know other servers, you can enter their online addresses into the list by clicking **Add**.

Internet

Here you can determine how an existing dial-up connection should be handled when a user logs off, and you can deactivate the integrated Windows Firewall.

In Windows XP you can also click the **Settings** button in order to set various advanced options for your Internet connection.

Internet Explorer

Explorer Bars

Here you can set how the toolbars in Internet Explorer should behave. For example, you can have the search bar always perform searches using Google™ and change settings for the Autocomplete feature in the address bar.

View

In the **Title bar** section, enter the text you would like to be displayed in the Internet Explorer title bar.

Favorites

Here you can show and hide favorites folders and their contents and thereby hide unwanted folders. Please note that the contents of the favorites folders is not shown here and only the available folders are listed. You can also sort the folders by name.

Menu

This is where you can customize the Internet Explorer menu bar and use the **Settings** button to add many useful commands to the context menu that is called up when you right-click on any web page.

Under **Show source code** you can specify whether, when you select **Show source code**, the website should be opened with Internet Explorer or with a different program, e.g. the Windows editor (notepad.exe).



Navigation

In the **Website behavior** section, you can specify how Internet Explorer should react when links are called up. For example, you could specify that pop-ups or links opened in other programs are always opened in a new tab in the current window.

In the **Start pages** section, specify which websites should automatically open when Internet Explorer is launched. Several sites can be selected for this. Use the **Up** and **Down** buttons to change the order of the pages.

Security

This section concerns security settings in Internet Explorer.

In the **User Agent String** section, specify how Internet Explorer identifies with the websites you visit.

Under **Download confirmation**, you can specify whether Internet Explorer is permitted to download certain file types such as videos or music files without confirmation. If you wish to be asked before such files are downloaded, you must select **Always confirm before downloading files**.

Performance

Here you specify the profile that corresponds most closely to the bandwidth of your Internet connection. In the **Maximum number of connections** section, you can specify how many server connections can be established.

Mozilla Firefox

General

This is where you can make the following general settings for Mozilla Firefox Internet browser.

Under **Text animation**, you can turn off annoying text effects, e.g. constant flashing or horizontally scrolling text (marquees). If these effects are a nuisance to you, you can disable them by selecting the options **Disable blinking text** and **Disable scrolling text (marquees)**.

Under **Error messages** you can specify whether error messages regarding a failed connection attempt to a web server should be shown as a window (dialog) or as a web page in the browser window.

Under **Sidebar position** you can specify whether the sidebar should appear on the right or left side of the browser window. The sidebar can contain your bookmarks, history and downloads by default.

Operation

This is where you can make changes regarding the usage of Mozilla Firefox.

Under **Address bar** you can specify that addresses will be automatically completed in the address bar, i.e. Internet addresses appear automatically in the address bar after you have entered the first few letters of the address (provided that you have already visited this website).

For Mozilla Firefox 2 and more recent versions, you can also specify whether the **Load address** button should appear beside the address bar.



Under **Open submenus** you can specify how long before a submenu automatically opens when you hover over it with the cursor.

Windows

This is where you can specify how popup windows and links should be displayed in Mozilla Firefox and how much influence websites can have on the display of the popup window.

In the **Opening links** section, you can specify whether, after clicking on a link, the contents should be displayed in the current window or in a new window.

In the **JavaScript** section, under **Allowed window manipulation**, you can limit changes that websites are allowed to make to popup windows. Some web sites try to hide the navigation bars in a popup window so that it looks like a Windows message dialog. You can prevent this here.

Tabs (Mozilla Firefox 2 or later versions)

Here you can make the settings for the Mozilla Firefox tabs.

In the **"Close" button** section, you can specify where the **Close** button for the tabs should appear. You can choose from four different positions.

In the **Minimum width** section, you can specify the minimum width of the tabs, from Mozilla Firefox 2 onwards. If more than one tab is open, the width of each tab will be automatically reduced until the minimum width set here has been reached. If further tabs are opened, a scrollbar will be shown on the right-hand side of the screen which you can use to scroll to the tabs that are not visible.

Under **Color of active tab** you can use the **Highlight with color** option to specify which color should be used to highlight the tab currently active in the browser. Click on the **Change** button to change the color used to highlight the top and bottom borders of the active tab.

Performance

Here you can enable the pipelining feature of Mozilla Firefox. Pipelining is an experimental function through which the web browser sends multiple download requests to a web server over a single connection. This is not supported by all web servers.

Opera

Title Bar

Here you can configure the settings for displaying the Opera title and logo.

Under **Window title**, enter in the **Title** field the text you want to appear in Opera's title bar. If you leave the field empty and click on **Accept** or **OK**, the field is automatically filled with the default entry **Opera**.

In the **Opera icon** section, in place of the red "O" opera icon you can select a different icon from your hard disk. The selected icon is then displayed in the Windows taskbar and in the Opera window.

If the icon file you select is valid, the icon is displayed immediately. If the icon file you select is invalid, the standard Opera icon is reinstated.



Operation

This is where you can make changes regarding the usage of Opera.

Under **Autocomplete for web addresses** you can specify that addresses will be automatically completed in the address bar, i.e. Internet addresses appear automatically in the address bar after you have entered the first few letters of the address. If, for example, you enter just one word only, then top-level domain suffixes like ".net" and ".com" are added to the end and the prefix "www." to the beginning. Disabling this function can speed up Opera a little.

Under **Show source code** you can specify whether, when **Show source code** is selected in the website context menu, the internal editor in Opera should be used or another program, e.g. Windows editor (notepad.exe).

Performance

You can turn on fast navigation again here, which is set to automatic mode by default in Opera 9 onwards.

By selecting **Automatic mode**, you can specify that the web server setting should be taken into account when you navigate through the browser history, which informs the browser whether a site can be loaded from the cache using "Back" or "Forward" or whether the website should be downloaded anew each time. The latter is necessary for certain shop pages to function correctly. However the server often demands that the page be downloaded again from the web server when it is not necessary.

By selecting **Compatibility mode** you can specify that, regardless of how the server is set, the sites are never downloaded from the browser cache when you navigate through the browser history, but are always downloaded anew from the website. This setting is generally not required and is not recommended for fast surfing.

By selecting **Fast mode**, you can specify that the websites already on your computer are always loaded from the cache. This not only has the advantage that the back and forward functions are suddenly very fast again, but also that a lower data volume needs to be downloaded over the Internet connection. Furthermore, entries you have made into form fields are generally retained during navigation in a browser. For websites to function correctly with active site contents, it may however be necessary to manually refresh the websites regularly (e.g. using F5).

Search

Here you can set which search engine Opera should use in general and for speed dial and how the speed dial should be displayed.

Under **Default search engine** you can specify which search engine Opera uses. This is automatically selected in the search field, in the address bar, when "Search" is selected in the context menu of selected text and when entering several words in the address bar.

Under **Speed dial default search engine** you can change the search engine that is displayed by default in the speed dial page in a new empty tab.

Email and Chat

Outlook Express (Windows XP only)



You can change the font here which is displayed in the application title bar. You can also decide whether the application should show a splash screen when starting up.

Here you can also configure the security function that blocks executable email attachments. If you do not wish to have such attachments blocked, you can disable this function. But please note that such attachments may also contain malware such as viruses that are run when you click them.

Windows Mail (Windows Vista only)

You can change the font here which is displayed in the application title bar. You can also decide whether the application should show a splash screen when starting up.

Here you can also configure the security function that blocks executable email attachments. If you do not wish to have such attachments blocked, you can disable this function. But please note that such attachments may also contain malware such as viruses that are run when you click them.

Office Outlook (Windows 7 only)

Under **Minimize Outlook** you can select whether Outlook 2003/XP should, when minimizing the window, create an icon either in the taskbar or in the taskbar notification area (beside the clock). If you opt for the notification area, turn on the **Minimize Outlook to notification area** option.

Under **Email Attachment Security** click the **Settings** button to open a window in which you can specify which file attachment types are automatically blocked.

Windows Messenger (Windows XP only)

Under **Run**, you can specify whether and for which events Windows Messenger should open automatically. If you want to prevent Windows Messenger from running entirely, select **Disable Windows Messenger**.

If you do not use Windows Messenger at all, you can also remove it from your system entirely. Simply use the **Removal** option for this.

Privacy

General

Here you can configure settings for your privacy and security when working with your computer.

Under **Automatic Windows Updates** you can specify whether Windows should automatically establish a connection with Microsoft or not. If **Enable automatic Windows Updates** is activated, Windows may then establish automatic contact with the Microsoft server as soon as there is an Internet connection, in order to check if there are any updates for your system.

The **Notify before downloading updates** option should be enabled if you want to be asked permission before Windows downloads available updates from the Internet.

Cover Tracks

Here you can configure settings to cover your tracks when working with documents and surfing the Internet.



Under **Delete history lists** you can click **Delete now** to clear the list of recently opened files in the Start menu.

Under **Clear Internet Explorer cache** enable the **Clear Internet Explorer cache when closing** option if the web browser should clear its cache as soon as it closes. You should only select this option when maximum security is important to you and you do not wish others to be able to find out which sites you visited on the Internet by viewing the cache.

Internet Explorer

This is where you determine your privacy security settings.

Under **Integrated SmartScreen filters** you can enable the **SmartScreen filters** to ensure that Internet Explorer checks the websites accessed for suspicious and known scam websites.

Under **Integrated Windows authentication** you can enable the **Disable integrated Windows authentication** option to ensure that Internet Explorer no longer automatically attempts to log on to websites using Windows authentication.

Windows Media Player

Here you can configure your privacy settings for Windows Media Player.

Windows Media Player communicates frequently with the Internet. Under **Settings**, you can specify that neither the list of recently played media files nor information about playback media or music files should be saved. Click **Highest security** to turn all options on in one go.

Click **Advanced** to proceed to the data protection settings for Windows Media Player. Here you can block script commands from running, prevent the automatic purchase of licenses, disable the automatic download of codecs and block Internet sites from identifying the player.

Advanced

Here you can make additional privacy settings.

Under **Page file** you can click **Go to "Memory management"** to specify that the Windows page file should be deleted automatically when the system shuts down.

Under **Internet time** you can disable the automatic synchronization of the Windows system clock with an Internet reference clock.

Under **Error reporting** you can specify whether Windows should send an error report with your system configuration to Microsoft following a crash. Use the **Error reporting** button to open the various reports and disable them with a click of the mouse.

11.1.4. Administration

User Logon

General

Windows XP:



Here you can choose between the Welcome screen and the logon prompt. The default setting in Windows XP is the Welcome screen. This shows a list of all available user names, which can be selected with a mouse click. Alternatively, you can select the option **Use the old logon dialog**. This brings up the secure logon prompt, where you are required to enter your logon details manually.

You can also specify here additional settings concerning the behavior and appearance of the logon screen.

Windows Vista and Windows 7:

You can adjust the behavior and appearance of your logon screen and the logon prompt here. Click on the **Adjust** button to set individual options.

Automatic logon

To skip logging on to the system a user can be logged onto the system automatically. If you wish to do this, select the **Enable automatic logon** option and enter your logon data in the placeholders below.

Under **Security** you specify whether or not logon can be skipped using the Shift key. You can also have the system carry out a logon immediately after a logoff.

Messages

Under **Notification before logon**, you can set a predefined notification that is displayed to all users before logon - for example a warning from the boss not to surf the Internet during office hours. To do so, first enable the **Show message before logon** option and then enter the title and actual text of the notification in the input fields.

Under **Error search during logon and logoff**, you can specify that detailed status messages should be shown during the logon and logoff process.

Tour (Windows XP)

First-time users can be invited to go on a tour of Windows XP following system startup. During this tour, the user is shown all important Windows XP modules. Deselect the option **Show Windows Tour after logon** if you do not want the tour to be activated after the system starts up. Under Scope, you can specify whether this option only applies to the current user or to all users.

Welcome Center (Windows Vista) / Getting Started (Windows 7)

New users can be shown the **Welcome Center** (in Vista) or the **Getting Started** window when the system is started up, which is designed to make setting up the system easier and shows links to further information and offers on the Internet. You can turn this display on or off here.

Drives

General (Windows XP only)

Here you make certain settings concerning your hard drives. For example you can enable UDMA66 support, which can speed up access to your drives.

Under **NTFS file system**, you can set two options that relate to the new Windows NTFS file system:



Save the date of the last access to a file and **Save short (DOS) file names**. We recommend that you leave both options enabled, as disabling them may have negative side effects on the efficiency of hard disk defragmentation and on compatibility with older software.

Memory space

Windows automatically sounds the alarm if there is only a small amount of disk space remaining on a drive. If this warning disturbs you, you can disable the **Display warning about low disk space** option.

AutoPlay

Under **Media change monitoring**, you can turn on the **Monitor CD drives for media change** option. If you do so, Windows monitors the CD drives. As soon as a new data carrier is inserted, Windows reads it and tries to launch its content automatically.

Under **AutoPlay**, you can click on **Advanced** to open a window in which you can specify autoplay settings for various data carriers, such as music CDs.

Advanced

Under **AVG Styler**, you can click on **Start AVG Styler** to call up the module and use it to change the icons of individual drives.

Under **AVG Drive Defrag**, you can click on **Start AVG Drive Defrag** to open the module for defragmenting drives and for optimally arranging files on the drives.

Under **Computer** (or **My Computer** in Windows XP), you can click on **Settings** to specify which drives are displayed in the Windows (My) Computer.

Memory and Cache

Memory Management

This includes settings for managing the physical and virtual memory.

Under **Virtual memory**, you can specify that drivers and the Windows system core can be replaced if necessary or are always kept in the RAM.

Under **Page file**, you can specify that **AVG PC TuneUp** always overwrites the content of the Windows page file with zeros, thereby deleting it when the system is shut down.

Clicking on **Recommended** accepts the settings recommended by **AVG PC TuneUp**.

Memory Usage

Here you can set whether the computer should reserve more RAM for the programs or for the system cache.

Advanced

Clicking on the corresponding buttons here, takes you to the **AVG StartUp Manager** and **AVG Process Manager** modules, which you can use to configure the system startup and manage running



programs.

Startup and Maintenance

System startup

Here you can make general settings about how Windows should proceed when starting up the system.

Under **Boot defragmentation**, you can enable the **Enable boot defragmentation** option to specify that files required for booting should be arranged on the hard disk so that they can be found particularly quickly.

Under **Boot logo and error messages**, you can enable the **Do not display boot logo and error messages** option to specify that Windows should not only suppress the boot logo display but also the display of error messages during startup.

Under **Waiting time for drive check**, you can specify how long the user should be given to decide against running the CHKDSK scan program. This program is launched automatically if the computer was not shut down properly and checks the integrity of the data on the hard disks.

Exit (Windows XP only)

Here, you specify what Windows should do if individual programs have crashed.

Under **Waiting time without response**, you can specify the time in milliseconds that the system gives the program to show a response. It will then be ended in the Task Manager or when the computer is shut down.

Under **End programs automatically**, you can set whether applications should be closed automatically or whether the **End program** dialog should be shown.

Desktop and Taskbar

Here you can make settings regarding the stability of the desktop and taskbar.

Under **Desktop and taskbar in a separate process**, you can enable the **Execute desktop and taskbar in a separate process** option to increase the stability of the system if Explorer crashes. This increases stability, but requires an additional 8 MB of disk space.

Under **Restart desktop and taskbar automatically**, you can enable the options to ensure that both the desktop and taskbar are restarted again automatically if they should crash. This means that the system remains operational.

Errors

Here you can specify how the system should behave in the event of errors.

Under **Audible signals**, you can enable the **Play acoustic signal when errors occur** option to specify that the system should make a sound if there is an error message or incorrect entry.

Under **System errors**, you can select from the dropdown list what should happen if the system has been stopped due to a critical system error. You can also specify that the event should be entered in



the system log.

Under **Error reporting**, you can specify whether Windows should send an error report to Microsoft following a crash. This will communicate not only information about the error but also information about your system.

System

General

Under **Windows registration**, you can change the name and company of the user who registered the current Windows version. Here you can also see the serial number and product ID of your Windows license.

Under **Windows Installer - user data**, enter the name and company name that should be automatically entered into the user information when new software is installed.

Under **Support information**, you can use the **Settings** button to open a configuration window in which you can modify the information shown in the system properties.

Common Dialogs

Here you specify the appearance of the common dialogs for opening and saving files.

Under **File name**, you can specify whether, in common dialogs, a selection field containing the files most recently used is to be displayed instead of a single input field.

In Windows XP, the **Folder navigation** is also available, where you can specify which navigation elements should be shown for simplified operation in common dialogs. You can also specify whether the "Back" button should be displayed and if a navigation bar should be displayed on the left-hand side of the common dialog.

Search (Windows XP only)

Here you can define the appearance and the behavior of the search dialog.

The **Disable indexing service** option prevents the system from automatically indexing the contents of your files when the computer is idle.

The **Use classic search in Explorer** option replaces the modern style search dialog with the classic style.

Under **Searched file types**, you can click **File types** to specify which text file types can be searched for specific content.

Special Folders

Here you specify the physical paths to which special folders such as "My Documents" should link. Highlight a predefined path and click on **Edit** to change it to your requirements.

Command prompt



You can configure the appearance and behavior of the command prompt here.

Under **Completion**, you can specify which key combinations are to be used to complete file and folder names.

Under **Advanced settings**, you can click on the **Advanced** button to open a window where you can specify the visual appearance and start folder of the command prompt.

Security

User Account Control (Windows Vista and Windows 7 only)

The User Account Control feature ensures that no unauthorized changes are made to the computer. It does this by asking whether a user has administrator rights to allow any changes to be made to the system. If User Account Control is enabled, a standard user will always be asked to enter an administrator password to make such changes.

You can specify here how a user logged on as an administrator is to be informed of potential changes to the computer and prompted for confirmation.

This is how Windows differentiates between changes that the user makes himself (e.g. security-related settings) and the startup of programs that can carry out changes. You can set here in detail, which changes must require confirmation first and whether a password must be entered beforehand.

Because this is a security-relevant setting, it is advisable to leave the user account control activated and select at least **Prompt to confirm without entering password** (for Windows Vista) or **For changes by programs, without password** (for Windows 7).

One aim of User Account Control is to ensure that no programs start in the background without the user being aware of it. At every program startup, Windows determines whether this program will make changes to the computer. If this is the case and User Account Control is enabled, the user will be prompted to have an administrator confirm the program startup. This feature is a key security step in case an unknown (and potentially unwanted) application starts up without the user having initiated it himself.

Security Center (Windows Vista) / Maintenance Center (Windows 7)

The Security Center or Maintenance Center, as it is called in Windows 7, regularly runs in the background to check the security status of your computer and displays warnings if a possible security problem is determined.

If these warnings are displayed on your computer in error or you do not want to be shown warnings from the Security/Maintenance Center, you can switch the warnings off here.

Advanced

Under **Screensaver password prompt**, you can specify how long the screensaver has to be running before the password protection is activated (if this option is enabled). The default value is 5 seconds.



11.1.5. Wizards

In this category you will find the **Copy settings** wizard. It copies your settings to other user accounts and to the Windows logon screen.

Copy settings

You can use **AVG System Control** to make a number of settings by which to change the appearance and the behavior of the system to suit your requirements. However, these settings are only normally valid for your current user account.

Use the **Copy Settings** wizard to copy your settings to other user accounts and to the Windows logon screen.

The wizard shows you a list of settings that can be copied. Make your selection and click **Next**.

Now you can choose where the selected settings should be copied to. A possible target (depending on the selected settings) is the logon screen. If you have several users set up, all other users are also shown as possible destinations. Select the destinations you want and click **Next** to start the copy process.

After successfully completing the copy process, close the wizard by clicking **Finish**.

11.2. Personalizing the Appearance of Windows

The following chapters explain **how** you can personalize the appearance of Windows with the **AVG Styler** module.

Please note that the "Boot screen" and "Startup logo" categories can only be used on Windows Vista.

Windows would not be very useful without its graphical user interface. The importance of an attractive interface is demonstrated by the new design of Windows Vista and Windows 7: the whole system feels immediately fresher and more modern.

But just as in fashion, it's easy to get tired of the new design, not to mention the people who have always been bothered by what they consider a "candy" look.

With **AVG Styler**, you can change the appearance of numerous elements in Windows to suit your personal taste. You'll be pleasantly surprised at how many changes you can make here. For more information, please refer to the corresponding sub-chapter:

1. [How to Change the Appearance of Windows](#)
2. [Boot Screen](#)
3. [Tips for Attractive Boot Screens](#)
4. [Startup Logo](#)
5. [Logon Screen](#)
6. [System Elements](#)
7. [Managing Icon Packages](#)



8. [File System](#)
9. [Appearance of Icons](#)
10. [Repair](#)
11. [Visual Style](#)

11.2.1. How to Change the Appearance of Windows

Start the **AVG Styler** module by going to the **Personalize** category in the Start Center and clicking on the **Personalize the appearance of Windows** entry in the **Change Windows appearance** area.

Alternatively, you can start the module by going to **All functions** in the Start Center and selecting the **Change Windows appearance** entry under **Windows**.

The **AVG Styler** start page opens from which all adjustment options of the module can be quickly reached.

Click on the area in which you wish to make changes. Give your creativity free reign and design your Windows system completely to your own tastes.

11.2.2. Boot Screen

When you boot up Windows, a black screen is displayed as standard. **AVG Styler** lets you switch this boot screen for a different one with just a few clicks. Or let your imagination run wild and create **your own boot screen** with your favorite vacation photo, for example.

Please note that this function is not available in Windows 7 and 8, as these operating systems do not use a boot screen.

This is how it works:

Start the **AVG Styler** module by going to the **Personalize** category in the Start Center and clicking on the **Personalize the appearance of Windows** entry in the **Change Windows appearance** area.

On the navigation bar, click in the left-hand window area on **Boot screen**.

AVG Styler lists all available boot screens. The first time you use the module, the only screen in the list will be the default Windows boot screen.

You can add **new boot screens** to the list before finally accepting them. To do so you have the following options:

Downloading previously created boot screens

In the top left, click **Add** under **Boot screens**.

Select the entry **Download Boot Screens from AVG Online**.

This takes you to a website where you can find a wide selection of different boot screens with which you can improve the appearance of the startup process exactly how you want.

Click on a boot screen.



This is automatically opened with **AVG Styler** and added to the list.

Adding Boot Screens from a File

In the top left, click **Add** under **Boot screens**.

Select **Load boot screen from a file**.

An Explorer window opens and you can select any given file on your computer. The following formats are supported:

| Type | File extensions | Description |
|--------------------|-------------------------------|--|
| AVG boot screen | .TBS | The individual format of AVG Styler. |
| Stardock Bootskin | .BOOTSKIN | The format of many boot screens on websites such as www.wincustomize.com |
| Images | .BMP; .PNG; .GIF; .JPG; .JPEG | If you select an image in one of these formats, the Create boot screen dialog is automatically called up with this image, allowing you to make additional adjustments. |
| Ntoskrnl.exe files | .EXE | The system core of Windows XP, in which a boot screen was incorporated. AVG Styler |

Select a new boot screen and give it a name under which it will appear in the list of **AVG Styler**.

You can also enter the name of an author. The newly added boot screen now appears in the list. You can add additional boot screens.

Creating your Own Boot Screen

Under **Boot screens** click **Create new**.

A wizard appears with which you can search for and adapt an image. You can select an image on your computer or on an external storage device.

You also have the option of first transferring an image from a camera or scanner or starting a Google™ image search directly from **AVG Styler**. In both cases, you save the required image to a location that you can easily find again and click on **Search local drives** to load the saved image.

Optimizing the appearance of your new image:

Please note that the available alignment options are only effective if the image is not yet the correct size for a boot screen (640 x 480 pixels). Under **Background**, you can specify the color to be used for areas not covered by your image.

For technical reasons, this includes the background of the progress bar. You can also set position, foreground color and edge color to suit your individual taste. Position the progress bar at a location that



does not interfere with the overall picture.

Save the new boot screen to the **AVG Styler** list under a name of your choosing.

You can also enter the name of an author. The newly added boot screen now appears in the list.

Restoring the default

If you no longer like your new boot screen, you can restore the default Windows screen at any time.

Click on the **Restore Defaults** button.

The default boot screen is then automatically selected from the list and a preview opens.

Click **Apply** to apply it.

Select the boot screen you want from the list to preview it. Click **Apply**. **AVG Styler** accepts the new boot screen.

11.2.3. Tips for Attractive Boot Screens

Please note that these tips apply to Windows XP only.

For technical reasons, all boot screens in Windows XP may only have 16 colors, of which some are prescribed (e.g. black). **AVG Styler** therefore has to reduce the full range of colors in your composition (normally 16.7 million) to a very few when you click **Save boot screen**.

AVG Styler uses a sophisticated algorithm for this to automatically determine the best 16 colors for your picture. If the picture contains too many different colors, the results of this conversion may not be satisfactory.

Experience has shown that the best boot screens are those that use only a few different colors. This means that an image that consists predominantly of different blue shades and only a few contrasting colors will probably make an attractive boot screen.

Set the foreground color of the progress bar to a color that is contained in your image. This way, you do not use one of the precious 16 colors in the progress bar only. Wherever possible, avoid skin tones in your boot screen. Images with skin tones normally cannot be displayed correctly with only 16 colors (ask any graphic artist). Of course, you may be lucky. The best thing to do is try!

11.2.4. Startup Logo

Please note that this function is only available on Windows Vista because neither Windows XP nor Windows 7 and 8 use the startup logo.

Just before logon, a small, animated Windows logo appears. With **AVG Styler** you can replace this startup logo without making risky interventions in the system.

This is how it works:

Start the **AVG Styler** module by going to the **Personalize** category in the Start Center and clicking on the **Personalize the appearance of Windows** entry in the **Change Windows appearance** area.



On the navigation bar, click in the left-hand window area on **Startup logo**.

AVG Styler lists all available startup logos. You can now **add** additional predesigned startup logos or create your **own startup logo**.

You can add **new startup logos** to the list before you accept it finally. To do so you have the following options:

Downloading Previously Created Startup Logos

In the top left, under **Startup logos**, click **Add**.

Select the entry **Download Startup Logos from AVG Online**.

This takes you to a website, where you can find a wide selection of different startup logos with which you can improve the appearance of the startup process exactly how you want. On the AVG website simply click on a startup logo. This is then automatically opened with AVG Styler and added to the list.

These attractive startup logos can also be stored as a file (with extension .tla) to a USB flash drive. You can then transfer these startup logos to any computer on which **AVG PC TuneUp** is installed by clicking **Add** and **Load startup logo from a file**.

Adding Startup Logos from a File

In the top left, under **Startup logos**, click **Add**.

Select the entry **Load startup logo from a file**.

An Explorer window opens and you can select any image on your computer to be used in place of the animated startup logo. You get best results when your image is in 300x300 pixel format.

Select a new startup logo and give it a name under which it will be included in the list of **AVG Styler**.

You can also enter the name of an author. The startup logo you added now appears in the list. You can add additional startup logos.

Creating your Own Startup Logo

Under **Startup logos** click **Create new**.

An Explorer window opens and you select an image on your computer or an external storage medium.

Save the new startup logo to the **AVG Styler** list under a name of your choosing.

You can also enter the name of an author. The startup logo you added now appears in the list.

Restoring the default

If you no longer want to use your new startup logo, you can of course restore the Windows default at any time.



Click on the **Use default**.

The default startup logo is then automatically selected from the list and a preview opens.

Click **Apply** to apply it.

To preview the startup logo you want, select it in the list. You can even animate the preview by clicking on the **Play** button.

Click **Apply**. **AVG Styler** uses the new startup logo.

11.2.5. Logon Screen

Please note that this function is not available in Windows 8, as this operating system uses no logon screen.

If you share your computer with other users, or if you use a password to protect your account, you will be familiar with the Windows logon screen. **AVG Styler** lets you change the logon screen to suit your personal taste.

This logon screen shows a list of all user accounts. Users must select their account from this list, enter their password (if one is set) and are then logged on to the system.

This is how it works:

Start the **AVG Styler** module by going to the **Personalize** category in the Start Center and clicking on the **Personalize the appearance of Windows** entry in the **Change Windows appearance** area.

On the navigation bar, click in the left-hand window area on **Logon screen**. **AVG Styler** lists all available logon screens. The first time you use the module, the only screen in the list will be the default Windows logon screen.

You can first add **new logon screens** to the list before you accept it finally. To do so you have the following options:

Downloading Previously Created Logon Screens

Click **Add** in the top left under **Logon screens**.

Select the entry **Download Logon Screens from AVG Online**.

This takes you to a website where you will find a wide selection of different logon screens which you can use to give your system an individual style.

Click on a logon screen.

This is automatically opened with **AVG Styler** and added to the list.

Adding Logon Screens from a File

Click **Add** in the top left under **Logon screens**.



Select the entry **Load logon screen from a file**.

An Explorer window opens and you can select a file on your computer. However, only files in **AVG Styler** format (with the .TLS extension) are supported.

In addition, all available logon screens can be directly installed with the file Logonui.exe or in Stardock LogonStudio format (LOGONXP).

Select a new logon screen and give it a name under which it should appear in the **AVG Styler** list.

You can also enter the name of an author. The newly added logon screen now appears in the list. You can add additional logon screens.

Creating your Own Logon Screen

Please note that this feature is not available in Windows XP.

Under **Logon screens**, click **Create new**.

A wizard appears with which you can search for and adapt an image. You can select an image on your computer or on an external storage device.

You also have the option of first transferring an image from a camera or scanner or starting a Google™ image search directly from **AVG Styler**. In both cases, you save the required image to a location that you can easily find again and click on **Search local drives** to load the saved image. Please note that images found using the Google™ image search may be protected by copyright. You must only use those images that are not protected by copyright.

Optimizing the appearance of your new image:

Please note that the available alignment options are only effective if the image is not yet the correct size for a logon screen (640 x 480 pixels). Under **Background**, you can specify the color to be used for areas not covered by your image.

Save the new logon screen to the **AVG Styler** list under a name of your choosing.

You can also enter the name of an author. The newly added logon screen now appears in the list.

Restoring the default

If you no longer want to use your new logon screen, you can naturally restore the default Windows screen at any time.

Click on the **Restore Defaults** button.

The default logon screen is then automatically selected from the list and a preview opens.

Click **Apply** to apply it.

Select the desired logon screen from the list to preview it.

Click **Apply**.



Most welcome screens are in English, but not all. For this reason, your system may greet you in a different language the next time you start your computer after installing a new screen. Then, instead of "Click your user name to log on," the screen might read "Klicken Sie auf Ihren Benutzernamen, um sich anzumelden," for example.

In this case, you may be asked if you want to use the texts in the selected logon screen, or if you want to use the texts from the default logon screen in your system language.

AVG Styler applies the new logon screen. You can test the logon screen by simultaneously pressing Ctrl + Alt + Del.

11.2.6. System Elements

In this category you can swap typical Windows icons for new ones.

Here's how it works:

Start the **AVG Styler** module by going to the **Personalize** category in the Start Center and clicking on the **Personalize the appearance of Windows** entry in the **Change Windows appearance** area.

In the navigation bar in the left window area, click under **Icons** on **System elements**.

AVG Styler shows you on the right-hand side tabs for the following areas, in which you can change system elements:

You change the icons for all elements in the Desktop, Start menu (not available in Windows 8), Explorer and Control Panel. You can also adjust the icons for the display of file types.

For some elements you can even specify new names (e.g. the Recycle Bin or My Network Places).

If you are missing the term "My Computer" from Windows XP, you could for example rename the element now called "Computer" in Windows Vista to "My Computer".

Click through the individual tabs and select an element that you wish to change.

Click **Replace icon**.

The icon library opens in which the current icon of the selected element appears. This is usually a library that was already installed with Windows. If you have your own icon library on your computer, you can import its content using **Browse**.

Select an icon to mark it for replacement.

Your changes will initially be indicated by a small orange asterisk next to the relevant elements in the list.

Any change that has not yet been accepted can be discarded at any time by selecting an element marked with such an asterisk in the list and clicking on **Discard unsaved changes made to this element**.

At the bottom right of the window, click **Accept** to carry out the change.

How to undo changes



You can discard any changes not yet accepted for an element by selecting them in the list and clicking on **Discard unsaved changes made to this element**.

Any changes already made to an element can be undone by selecting the element and clicking **Reset element to Windows default**. Please note that this link is only displayed if the element does not currently correspond to the Windows default.

If you should want to undo changes made to multiple items, you can click **Reset category** or **Reset all categories**. The first link only resets the elements of the currently selected tab, the second all system elements that can be changed with **AVG Styler**.

When you click on either link, a dialog appears where you can choose whether you want to reset all elements to the Windows default or whether you only wish to discard any unsaved changes for these elements. The second option is only available if there are changes that have not yet been applied.

11.2.7. Managing Icon Packages

It is of course a very laborious task to change every Windows icon individually. **AVG Styler** therefore allows you to swap all old-fashioned Windows icons for new ones in one fell swoop.

Adding an Icon Package

In the **AVG Styler** the left area of the window under **Icons**, click **System elements**. Then click **Icon packages** at the bottom.

A new window opens that shows all the available icon packages. Now you can add new icon packages to the list or install an existing one.

Click **Add**.

This allows you to add additional icon packages to the list. You have the option of using an icon package from your computer or downloading a new package. Here you can download numerous creatively designed icon packages.

On the web pages, just click on an icon package and open it with **AVG Styler**. After just a few seconds the package is displayed in the list.

Creating a new icon package

As an alternative, you can create your own icon package from your current icon set and either back it up or share it with friends.

Click **Create new package** at the top of the list.

A wizard opens to guide you through the process of creating an icon package.

Information about the author: Here you can immortalize yourself, if you want, and enter your name, email address and website address.

Package name and description: Enter a meaningful package name here. If you wish, you can add additional information on the package in the **Description** field.



Optimize package size: Use the options in this step to ensure that your package is not too large, so that it can be sent via email without problems.

Creating icon package: The icons are now collected and optimized if necessary, after which they are saved together in an icon package.

Finishing the wizard: The icon package has now been successfully created and will be added to the list of icon packages when you click **Finish**. Clicking **Open folder** takes you to the icon package folder in **AVG Styler**, so that you can copy the icon package to a different location or attach it to an email.

11.2.8. File System

Windows assigns a default icon to every drive, every folder, every Start menu folder and every entry in Favorites.

This is how it works:

Start the **AVG Styler** module by going to the **Personalize** category in the Start Center and clicking on the **Personalize the appearance of Windows** entry in the **Modify Windows appearance** area.

In the navigation bar in the left-hand window area, click under **Icons** on **File system**.

A tree structure of your drives and folders opens. Click through the individual elements of the tree structure to select those elements to which you would like to assign a more individual icon.

Ideas and tips:

- Under the first node, you could assign the drive containing your games an especially funky icon, but a more serious one to the drive with your office programs.
- You can proceed in the same way for folders - a few well-chosen icons help you to keep track of things, even if your drives are really full.
- The icons on the Start menu can also be swapped for more meaningful icons.
- You can even give your favorites in Internet Explorer their own icon. This will help you to find your most favorite favorites from a usually very long list.

Click through the individual elements of the tree structure and select an element to which you would like to assign a more creative icon.

Click **Replace icon**.

Please note that this is not possible for the three elements Computer, Start menu and Favorites.

The icon library opens in which the current icon of the selected element appears. This is usually a library that was already installed with Windows. If you have your own icon library on your computer, you can find its content using **Browse**.

Select an icon.

Click **OK** to apply your changes immediately.



Undoing Individual Changes

To undo a change, select an item in the list and click **Reset element to Windows default**.

Undoing Multiple changes

If you want to undo several changes at once, you may find the **Restore backup from a previous session** link useful. It starts **AVG Rescue Center** and enables you to undo the changes carried out with **AVG Styler** on a certain date.

11.2.9. Appearance of Icons

Here you can change the appearance of icons on the desktop.

Here's how it works:

Start the **AVG Styler** module by going to the **Personalize** category in the Start Center and clicking on the **Personalize the appearance of Windows** entry in the **Change Windows appearance** area.

In **AVG Styler** in the left area of the window under **Icons**, click **Appearance of icons**.

AVG Styler provides a preview of some items on your desktop that you can personalize.

Specify the size of items on the desktop (Windows XP only), specify how big the gap between them should be and whether a shortcut should be indicated by an arrow.

11.2.10. Repair

It can be fun to change the Windows icons and to make a few personal settings here and there. However, it is possible that the desired icons are suddenly not displayed correctly or are even swapped. **AVG Styler** has two repair functions.

This is how it works:

Start the **AVG Styler** module by going to the **Personalize** category in the Start Center and clicking on the **Personalize the appearance of Windows** entry in the **Change Windows appearance** area.

In **AVG Styler**, click **Repair** under **Icons** in the left-hand area of the window.

Click **Reload Icons**.

This function usually clears up any problems and allows you to continue restyling your Windows system. If reloading the icons does not resolve matters, there may be a serious problem with your icon cache.

Click **Repair Icon Cache**.

The icon cache is a file in which Windows stores all loaded icons, for faster loading in the future. Should an error occur with this file, all icons could be corrupted. Luckily, this error can be repaired directly from **AVG Styler**.

Note that you may need to restart your computer or log on again for this repair to take effect.



11.2.11. Visual Style

Please note that this function is not available in Windows 8.

Here you can change what is known as the visual style. This defines the appearance of windows and Windows buttons.

Here's how it works:

Start the **AVG Styler** module by going to the **Personalize** category in the Start Center and clicking on the **Personalize the appearance of Windows** entry in the **Change Windows appearance** area.

In **AVG Styler** in the left-hand window area under **Interface**, click **Visual Style**.

AVG Styler displays a list of all available visual styles. On the right, you can see a preview and other details of the style selected in the list.

You can add new visual styles to the list before finally accepting them. To do so you have the following options:

Downloading visual styles from AVG Online

In the top left under **Visual Styles** click **Add**.

Select the entry **Download Visual Styles from AVG Online**.

This takes you to a website where you can choose from a wide range of visual styles that you can download for free at any time.

Click on a visual style that you particularly like.

This is automatically opened with **AVG Styler** and added to the list.

Adding Visual Styles From a File

In the top left under **Visual Styles** click **Add**.

Select **Load visual styles from a file**.

An Explorer window opens and you can select a visual style on your computer or an external storage media, if you have already saved one. **AVG Styler** recognizes and supports almost every common format:

| Type | File extensions | Description |
|-------------------------|-----------------|--|
| AVG Visual Styles | .TVS | The individual format of AVG Styler. |
| Microsoft Visual Styles | .MSSTYLES | This Microsoft format often includes additional files that can be found in the same folder or in subfolders. |



| | | |
|--------------------------|------------|--|
| Compressed archives | .RAR, .ZIP | Archives are searched for all file types in this list, and decompressed automatically if such files are found. |
| Self-extracting archives | .EXE | These files are searched for compressed archives in RAR or ZIP format, which are treated according to the description of the Compressed Archive file type. |

Select a new visual style and give it a name under which it will appear in the **AVG Styler** list.

You can also enter the name of an author. The visual style you added now appears in the list.

Restoring the default

If you no longer like your new visual style, you can restore the default Windows style at any time.

Click on the **Restore Defaults** button.

The default visual style is then automatically selected from the list and the preview changes accordingly.

Click **Apply**.

Select the visual style you want from the list to preview it.

Click **Apply**.

The display is now temporarily darkened while **AVG Styler** activates the new visual style for you. After this brief moment, your Windows system shines with a new brilliance.

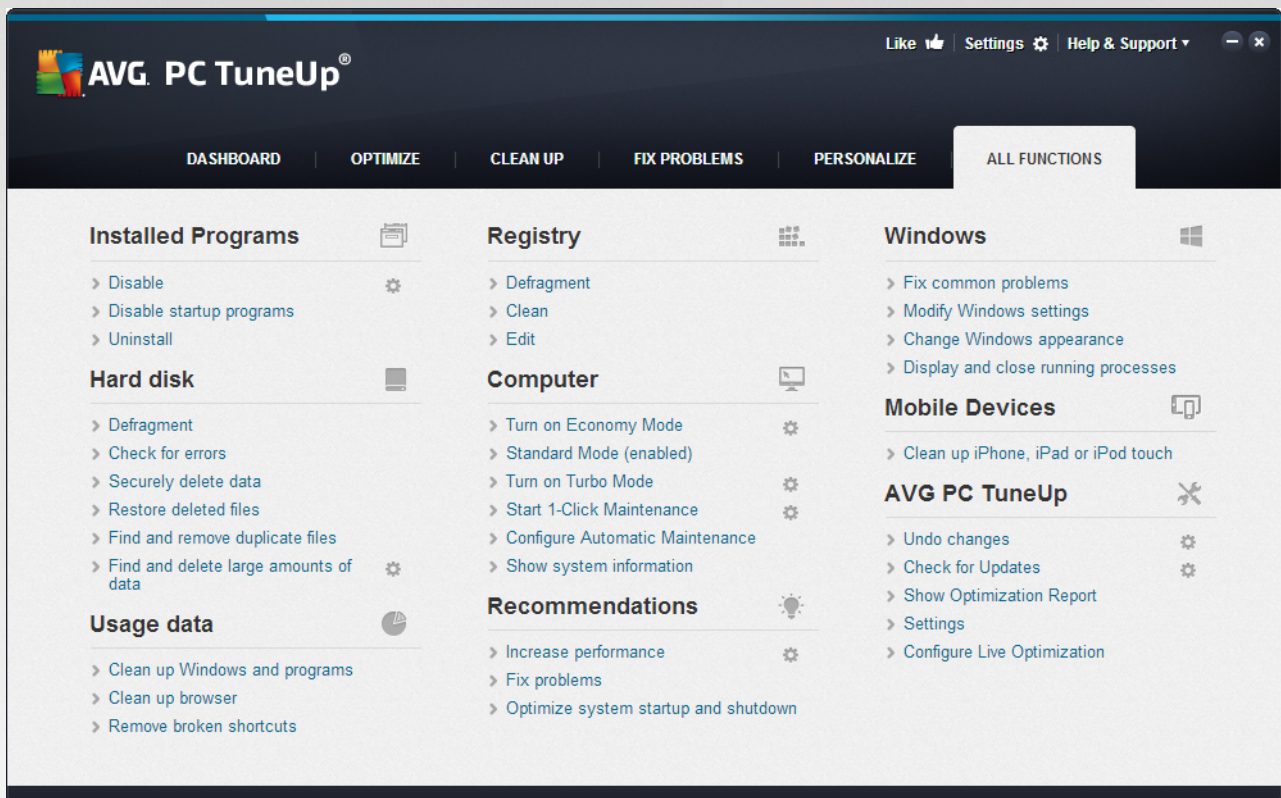
Deleting a visual style

If you want to remove a visual style from your computer entirely, select it and click **Delete**.



12. All Functions

On the far right of the Start Center, you will see the **All functions** menu. Opening this menu gives you a list of all functions that **AVG PC TuneUp** offers - clearly sorted according to application area. Clicking on the wrench icon next to an entry opens the settings for that entry, which you can adapt to your personal requirements.



You will find most of these functions in this view and in one of the five categories.

However, you will only find the following functions in this menu:

Installed Programs

Disable

Allows you to disable programs that you are not currently using, but do not wish to uninstall.

See also [How to Disable Programs](#).

Disable Startup Programs

Allows you to disable programs that are automatically started in the background when the system starts up, so as to speed up the system startup.

See also [How to Configure Your System Startup](#).

Uninstall



Shows all the programs installed on your PC with detailed information about them, and allows you to select programs to uninstall.

See also [How to Uninstall Programs](#).

Hard Disk

Defragment

Rearranges blocks of data on your hard disk, providing more disk space and quicker loading times for documents and programs.

See also [How to Defragment Your Hard Disk](#).

Check for errors

Checks the surface of your hard disk and your file system structure for errors and fixes them to prevent data loss.

See also [How to Check your Hard Disk](#).

Securely delete data

Gives you three options for deleting your files or folders so that they cannot be restored, even by professionals.

See also [How to Securely Delete Data](#).

Restore deleted files

Searches your hard disk and mobile data carriers for deleted files and restores them.

See also [How to Search for Deleted Files](#).

Find and remove duplicate files

Locates various duplicate files on your hard disk and allows you to remove them.

See also [How to Find Duplicate Files](#).

Find and delete large amounts of data

Allows you to find and delete large amounts of data on your storage media, so as to create more disk space.

See also [How to Run an Analysis](#).

Usage data

Clean up Windows and programs

Searches for files, protocols, history lists, backup files and temporary files that are not needed and that



can be safely removed from the hard disk without any negative impact on your system.

See also [How to Clean Up Windows and Programs](#).

Clean up browser

Cleans up the cache, cookies and Internet history of your browser, reliably removing traces of your surfing activities.

See also [How to Clean Your Browser](#).

Remove broken shortcuts

Searches your system for shortcuts and references that are no longer valid and deletes them. This prevents error messages when these references are called up.

See also [How to Remove Broken Shortcuts](#).

Registry

Defragment

Rewrites the central database of your Windows system (the Registry), eliminating gaps and structural errors to create a more stable system.

See also [How to Defragment the Registry](#).

Clean

Specifically searches for faulty entries in the central database of your Windows system (the registry) and repairs or removes them to create a more stable system.

See also [How to Clean the Registry](#).

Edit

The **AVG Registry Editor** module provides you with the option of searching quickly and easily for keys and values in the registry and making changes. Please note that this function should only be used by experienced users.

See also [How to Edit Your Registry](#).

Computer

Turn on Economy Mode

Reduces the power consumption of your computer by making optimum use of the energy saving potential.

See also [Economy Mode](#).

Standard Mode



Puts all tuning services and features at your disposal, without restriction.

See also [Standard Mode](#).

Turn on Turbo Mode

Allows you to temporarily turn off unnecessary background programs or maintenance processes to give your computer a performance boost.

See also [Turbo Mode](#).

Start 1-Click Maintenance

Checks your system for optimization options and then allows you to implement these optimizations directly.

See also [1-Click Maintenance](#).

Configure Automatic maintenance

Allows you to specify maintenance tasks that should be run automatically at regular intervals.

See also [Changing Maintenance Settings](#).

Show system information

Shows you important information about your hardware and software and the performance of your computer.

See also [How to Show System Information](#).

Recommendations

Increase performance

Shows you recommendations for increasing your system performance by making modifications to hardware and software, Internet settings and visual effects.

See also [Increasing the Performance of Your Computer](#).

Fix problems

Shows you existing problems that have a negative impact on your system's health and suggests solutions for remedying these problems.

See also [Fixing Problems](#).

Optimize system startup and shutdown

Checks your computer for recommendations for accelerating system startup and shutdown, e.g. disabling unnecessary startup programs.



See also [Optimizing the System](#).

Windows

Fix common problems

Shows you a list of common Windows problems and allows you to easily remedy your problems.

See also [How to Fix Common Problems](#).

Modify Windows settings

Allows you to modify visual effects, browser options, the desktop, the user logon and much more to your personal requirements.

See also [Personalizing Options and Behaviors](#).

Modify Windows appearance

Allows you to change the Windows user interface to your personal wishes and requirements.

See also [Personalizing the Appearance of Windows](#).

Display and close running processes

Allows you to view your running processes and open files and to exit or close these in the event of problems.

See also [How to Manage Running Processes](#).

Mobile Devices

Clean up iPhone, iPad or iPod touch

Allows you to connect an iOS device to your PC and clean it from unnecessary junk files in next to no time.

See also [How to Clean up an iOS device](#).

AVG PC TuneUp

Undo changes

Allows you to reverse changes made with AVG PC TuneUp or to resort to Windows restore points.

See also [Undoing Changes](#).

Check for updates

Checks whether new updates are available for your AVG PC TuneUp and installs them.



See also [How to Check for Updates](#).

Show Optimization Report

The optimization report shows you what AVG PC TuneUp has optimized on your computer to date.

See also [How to Display the AVG Optimization Report](#).

Settings

Allows you to customize AVG PC TuneUp to suit your needs, apply maintenance settings, and configure Live Optimization, Turbo Mode and the updates check for AVG PC TuneUp.

Configure Live Optimization

Allows you to activate two optimization measures for increasing the response rate and system startup speed.

See also [Configuring Live Optimization](#).

12.1. Editing the Registry

In this chapter, you will find out **how** you can edit the registry using the **AVG Registry Editor** module.

Please note that this feature is only intended to be used by experienced users.

The Windows registry is in effect a huge central database. Every new item of hardware or software you install is "registered" here. Over time, the registry gets larger and larger, making it increasingly difficult to keep a handle on things.

Experts in these matters searching for a suitable tool with which to get inside Windows and change a number of settings by hand should use the **AVG Registry Editor**. It naturally also includes the **AVG Rescue Center** protection, which allows all changes made to be undone at any time.

12.1.1. How to Edit Your Registry

Start the **AVG Registry Editor** module by going to **All functions** in the Start Center and selecting the **Edit** entry under **Registry**.

The Registry is the very heart of your Windows system. Please note that you should be sure you know what you are doing before making any changes here.

In the left-hand column the Editor displays the registry in a tree structure. The registry consists of countless keys broken down by subject matter into different categories. These categories are represented by different folders and subfolders.

Showing a Key

Double-click on a folder in the left-hand column to display its subfolders. When you get to the end of the hierarchy chain, the individual keys are displayed on the right.

Editing a Key



In the context menu of a key, select the different editing functions. You can **delete** keys, **rename** them, and **copy** them to the clipboard. You can also **edit** the values of a key.

In the context menu of a folder, select **New** to create a new key.

Browsing the Registry

From the Context menu of a folder in the tree structure, select **Search** to begin searching within the registry. **AVG Registry Editor** offers you comprehensive search options here.

Showing a bookmark and setting a bookmark

Select **Set bookmark** from the context menu of a folder in the tree structure so that you can find individual folders more quickly in the future.

Additional functions

In the menu bar, you will find numerous additional functions for editing your registry. For example you can export or print individual areas or indeed the entire registry. You can also edit the registry using the entries in the toolbar.

12.2. Checking for Updates

In this chapter, you will find out **how** you can use the **AVG Update Wizard** module to keep your **AVG PC TuneUp** up to date and **why it is important to do so**.

AVG PC TuneUp is constantly being developed: individual features are expanded or adapted to suit the latest technology and any errors are fixed. When a new version is available it will be made available to you on the Internet.

You have the option of automatically checking for updates or manually checking for updates.

Changing Settings

To change the update check settings, go to the menu bar and click **Settings** and then **Updates**. Here you can decide whether **AVG PC TuneUp** should regularly check for updates automatically. You can also specify here how often you should be informed of updates that have been found.

Checking for Updates Manually

If you do not want **AVG PC TuneUp** to check for updates automatically, you can turn this function off. In this case we recommend that you regularly check for updates yourself.

12.2.1. How to Check for Updates

Start the **AVG Update Wizard** module by going to the **All functions** category in the Start Center and selecting the **Check for updates** entry under **AVG PC TuneUp**.

Alternatively, you can start the module by clicking on **Help & Support** in the menu bar of the Start Center and



then selecting **Check for updates**.

AVG Update Wizard starts and establishes a connection to the Internet to check for updates.

If Updates Exist

You receive a list of the available updates with a short description of the new or modified functions.

Click **Next** to install the updates.

If No Updates Exist

If there are no updates, your **AVG PC TuneUp** is already up to date and you can close the wizard by clicking **Finish**.

12.3. Displaying the AVG Optimization Report

In this chapter, you will find out **how** you can use the **AVG Optimization Report** to keep a constant overview of the extent to which you have optimized your computer to date with **AVG PC TuneUp**.

The **AVG optimization report** summarizes all of the optimization steps already performed by **AVG PC TuneUp**. This report is particularly relevant if you use the numerous automatic background optimizations of **AVG PC TuneUp**. Here you can check at any time to what extent **AVG PC TuneUp** has optimized your computer so far.

12.3.1. How to Display the AVG Optimization Report

Display the AVG optimization report by going to **All functions** in the Start Center and selecting **Display optimization report** under **AVG PC TuneUp**.

This opens a clear summary of the optimizations already performed with **AVG PC TuneUp** and the benefits that these have provided.

If you hold your cursor over an optimization, a small information window opens that displays details on the benefit of the optimization or details on the individual optimizations.

You can display this optimization report for the last seven days, the last 30 days or for the entire period since installation. To do so, simply switch to the relevant tabs.



13. Rating Function for Programs

You can turn on the useful **Rating function for programs** in the **AVG Program Deactivator**, **AVG StartUp Manager** and **AVG Uninstall Manager** modules. It shows you how useful other users of **AVG PC TuneUp** found the programs that you have installed. You can use the rating function to help you decide which programs you really need in your day-to-day work.

In this chapter, you can find out **why it is helpful** and **how** you can turn on the **Rating function for programs**.

Often, you are faced with a decision about which of your installed programs you really need for your day-to-day work: that is why the **Rating function for programs** was developed.

The experiences of numerous **AVG PC TuneUp** users will help you to make your decisions in the **AVG Program Deactivator**, **AVG StartUp Manager** and **AVG Uninstall Manager** modules. The rating function for programs shows you which programs have been classified as useful and helps you to decide which startup programs you want to disable and which programs you want to disable or uninstall.

Please note: you need to have an active Internet connection to use the rating function.

Display of the Rating Function in the Modules

If you have switched on the rating function, it is integrated into the **AVG Program Deactivator**, **AVG StartUp Manager** and **AVG Uninstall Manager** modules as a separate column in the program list. You can identify your ratings by the blue stars in the **Usefulness** column. If you have not yet given your own rating, the column displays the average rating that other **AVG PC TuneUp** users have given the program. If no ratings have been given, the column is blank.

If you hover the mouse cursor over the column, a tooltip is displayed showing your rating and the rating of other **AVG PC TuneUp** users.

How to Turn On the Rating Function

Start either the **AVG Program Deactivator**, **AVG StartUp Manager** or **AVG Uninstall Manager** modules. The **Rating function for programs** dialog is displayed. Click **OK**.

If you do not want to make a decision just now, you can click on **Decide later**. The module is started without the rating function. You can enable the rating function at any time by clicking on **Rating function** in the toolbar, then on **Turn on** and this time selecting **OK** in the dialog that appears.

How to Turn Off the Rating Function

Click on **Rating function** in the toolbar and select the option **Turn off**. In the dialog that opens, you can decide whether you wish to archive your ratings for any subsequent use of the function. The ratings of other users are deleted from the database on your PC and will have to be downloaded again from the server if you switch the function back on.

How to Submit a Rating

1. Move the mouse cursor over the **Usefulness** column. When you rate a program, you must give it at least one star. A maximum of 5 stars can be awarded.



2. Click on the number of stars that you wish to award the program. So, if you wish to give three stars, click on the third star.
3. Your rating is automatically saved and transferred to the **AVG PC TuneUp** server.

If you wish to change your rating, you can proceed in exactly the same way as for the initial rating.



14. The AVG PC TuneUp Gadget

Another function of **AVG PC TuneUp** is the gadget. This is not supported by Windows XP and is therefore only available to you with Windows Vista and Windows 7.

The practical gadget can be displayed on the desktop. It keeps you constantly informed of the status of your computer. You no longer need to start **AVG PC TuneUp** to find out whether optimization potential has been identified in the **Dashboard** category. **AVG PC TuneUp** can also be launched from here.

In the gadget you can see at any time which **PC Mode** is currently enabled, and you can turn on another **PC Mode** at any time using the three buttons.

In this chapter, you will find out **why it is important to do so** and **how** you can display the **AVG PC TuneUp Gadget** on your desktop.

What is a Gadget?

Gadgets (or widgets) are small programs that are permanently displayed on the desktop and which provide the user with up-to-date information.

What is the AVG PC TuneUp Gadget for?

The **AVG PC TuneUp Gadget** tells you the status of your computer at all times, without you needing to start **AVG PC TuneUp** separately. The gadget is integrated in **AVG PC TuneUp** and notifies you of the current status of the **Dashboard** category.

Clicking on the icon in the top left corner of the gadget opens **Dashboard** in the **AVG PC TuneUp** Start Center. Here you can address the problems or recommendations directly.

PC Modes

The **AVG PC TuneUp Gadget** also allows you to turn on the various **PC Modes** with its three buttons. It also shows you which of the three **PC Modes** is currently enabled at all times.

So you can see that the **AVG PC TuneUp Gadget** is, on the one hand, a constant source of information about the status of your computer. In addition it offers practical direct access to the Start Center of **AVG PC TuneUp**.

How to Display the AVG PC TuneUp Gadget

You can display the **AVG PC TuneUp Gadget** on your desktop at any time.

In **Windows Vista**, proceed as follows:

1. Open the **Accessories** folder under **All Programs** in the Windows Start menu.
2. Then click on **Windows Sidebar**. A list of all the gadgets installed on your computer is shown.
3. Activate the **AVG PC TuneUp** gadget by double-clicking on it.



In **Windows 7**, proceed as follows:

1. Right-click on a free space on the desktop and select **Gadget** from the context menu.
2. Select **AVG PC TuneUp Gadget** and enable it with a double-click.



15. AVG PC TuneUp in Taskbar Notification Area

The notification area is the area on the right-hand side of the Windows taskbar. This displays, for example, the time, status icons or program shortcuts. **AVG PC TuneUp** has a notification area icon that shows you the current status of your system and provides an entry point to **AVG PC TuneUp**.

When you double-click on the notification area icon, **AVG PC TuneUp** starts up.

When you click on the icon with the left mouse button, a **flyout window** opens with detailed information about **AVG PC TuneUp** functions.

You can configure if, how and about what **AVG PC TuneUp** you would like to be informed in the taskbar notification area.

System Status

Under **System status**, you can see whether the **AVG PC TuneUp** Start Center currently shows the optimization potential. You can open the Start Center using the **Start AVG PC TuneUp** link.

For more information about the Start Center, see [The Start Center](#).

Automatic maintenance

Under **Automatic Maintenance**, you can see when automatic maintenance was last performed. The link takes you to the Automatic Maintenance configuration dialog.

For more information about Automatic Maintenance, see [Changing Maintenance Settings](#).

Live Optimization

Under **Live Optimization**, you can see the most recent activities of the two Live Optimization methods. A link takes you to the Live Optimization configuration dialog.

For more information about Live Optimization, see [Configuring Live Optimization](#).

PC mode

In the **PC mode** section, you can see whether **Turbo Mode** or **Economy Mode** is currently turned on. You can switch between the two modes as necessary here, or switch to **Standard Mode**. A link also takes you to the configuration wizard.

For how to configure the **Turbo Mode**, see [Turbo Mode Settings](#).

For how to configure the **Economy Mode**, see [Economy Mode Settings](#).

For general information about modes, see [PC Modes](#).

Settings

You can configure if, how and about what **AVG PC TuneUp** you would like to be informed in the taskbar notification area. For this, perform the following steps:

If the icon is displayed on your computer, simply right-click on it. Now select **Configure notification area**



settings in the context menu that appears. This takes you to the configuration dialog, where you can configure your settings. In addition to the icon, you can choose to have messages displayed in the form of balloons.

If the icon is not displayed on your computer, call up this dialog by going to the **Settings** menu in the **AVG PC TuneUp** Start Center and selecting the **Notification area icon** entry.